



मानक सन्दर्भ नोट - 2016 STANDARD REFERENCE NOTE -2016



कारखाना सलाह सेवा और श्रम संस्थान महानिदेशालय
Directorate General Factory Advice Service & Labour Institutes
श्रम एवं रोज़गार मंत्रालय, भारत सरकार
Ministry of Labour & Employment, Government of India
व्यावसायिक सुरक्षा और स्वास्थ्य भवन, एन. एस. मंकीकर मार्ग, सायन, मुम्बई-400022
Vyaavasayik Suraksha Aur Swasthya Bhavan, N. S. Mankikar Marg, Sion, Mumbai-400022

Web Site: <http://www.dgfasli.nic.in>

Tel: 022-24074358

Fax: 022-24071986

PREFACE

DGFASLI is the technical arm of the Ministry of Labour and Employment in matters related to Occupational Safety and Health in Factories, Ports and Docks. The organisation assists the Central Government in formulating policies in the administration of the Factories Act, 1948, enforcing the Dock Workers (Safety, Health and Welfare) Act, 1986 and liaising with State Governments, Union Territories, Port authorities and Industries for effective implementation of these statutes.

The 'Standard Reference Note 2016' provides comprehensive information on the objectives, functions, important activities, organisation structure, human resource and budget of the organisation. It contains details of studies/surveys, audits, support services, training programmes, promotional and other activities carried out by DGFASLI in its effort to prevent accidents and occupational diseases in Factories, Ports and Docks. This 'Standard Reference Note' also contains information on targets and achievement of the Plan schemes. Besides, it contains the details of activities undertaken for the safety and health improvement in factories, docks and construction.

To recognize safety efforts in factories, ports and docks, DGFASLI on behalf of the Ministry of Labour and Employment, Government of India, organised the Safety Awards presentation function for Vishwakarma Rashtriya Puraskar & National Safety Awards. The 'Standard Reference Note' contains the details of Safety Awards for the performance year 2014.

In addition to presenting the latest information on industrial injuries collected and analysed by Labour Bureau, this 'Standard Reference Note' further contains the state-wise information relating to occupational safety and health in factories based on the information collected by DGFASLI from the Chief Inspectors of Factories. It also contains information on Safety and Health matters such as industrial injuries, safety inspection, investigation etc. in respect of major ports. This compilation of data and its analysis reflects the trends, causes and areas of concern for preventing accidents and improving working environment in factories and ports.

Mumbai
05 July, 2017

(Dr. Avneesh Singh)
Director General

Contents

Title	Page No.
1. General Information	1
2. Budget	10
3. Plan Schemes	11
4. Safety & Health Improvement in Factories, Docks and Construction	14
5. Safety Awards	34
6. Human Resource Development	38
7. Statistics on Occupational Safety and Health in Factories	41
8. Statistics on Status of Compliance with Statutory Provisions of the Factories Act,1948	49
9. Statistics on Occupational Safety and Health in Ports	67
ANNEXURE-I	76
ANNEXURE-II	77
ANNEXURE-III	80
ANNEXURE-IV	81
Appendices	
I. Organisation Chart	84
II. Address of DGFASLI and its Subordinate Offices	85

1

General Information

1.1 DGFASLI- A Brief Introduction

The Directorate General of Factory Advice Service & Labour Institutes (DGFASLI), formerly known as the office of Chief Adviser of Factories, was set up in 1945 in Delhi, with the objective of advising the Central and State Governments on the administration of the Factories Act, 1948 and liaising with factories inspection services in the States. The office was subsequently shifted to Mumbai in 1966.

DGFASLI achieved significant importance as an attached office of the Ministry of Labour and Employment, Government of India serving as a technical arm to assist the Ministry in the formulation of national policies on Occupational Safety and Health in Factories and Docks.

The Dock Workers (Safety, Health and Welfare) Act, 1986 and the Regulations, 1990 provide for safety, health and welfare of dock workers. These are enforced by DGFASLI through the Inspectorates of Dock Safety set up in all the major ports in India.

1.2 Functions of DGFASLI

- Rendering advice and carrying out support activities for the administration of the Factories Act, 1948 and the Dock Workers (Safety, Health and Welfare) Act, 1986.
- Co-ordinating technical and legal activities to facilitate uniform standards of enforcement of safety and health in manufacturing and port sectors.
- Administration of the Dock Workers (Safety, Health & Welfare) Act, 1986 and Regulations framed there under and enforcing these in the major ports of the country.
- Educating and training employers and employees on matters relating to safety and health.
- Conducting promotional activities by operating schemes for (i) recognition of good suggestions under Vishwakarma Rashtriya Puraskar (ii) worker's outstanding contribution towards her organization, under Prime Minister's Shram Awards; and (iii) safety performance under National Safety Awards.
- Co-operating with International agencies like ILO, WHO, UNDP and advising Central Government with regards to international standards concerning safety and health.
- Training of foreign nationals and rendering expert advice to the developing countries.
- Building competence of enforcement agencies.
- Issuing approval to flameproof electrical enclosures.
- Collecting and disseminating information and material relating to safety and health.

1.3 Organization Structure of DGFASLI

DGFASLI organization comprises of the Headquarters, Central Labour Institute, 4 Regional Labour Institutes and 11 Inspectorates of Dock Safety.

- Headquarters situated in Mumbai
- Central Labour Institute situated in Mumbai
- Regional Labour Institutes at Kolkata, Chennai, Kanpur and Faridabad. A new RLI at Shillong is being set up.
- Inspectorates of Dock Safety at Mumbai, Kolkata, Chennai, Kandla, Mormugao, Tuticorin, New Mangalore, Cochin, Visakhapatnam, Paradip and Jawaharlal Nehru Port. The Inspectorate of Dock Safety at Ennore is being setup.

In 1959, the Central Labour Institute, Mumbai was established under UNDP Project as a socio-economic laboratory and as a national institute dealing with the scientific study of human aspects of industrial development. Subsequently, Regional Labour Institutes (RLIs) were established at Kolkata, Kanpur, Chennai and Faridabad to serve as Regional Centers. The detailed organization structure is given in **Appendix I** and the contact addresses of DGFASLI and its subordinate offices are shown in **Appendix II**.

The Central Labour Institute and Regional Labour Institutes are fully equipped with necessary laboratory facilities for conducting studies and surveys in the field of safety and health. The Institutes also have conference facilities fully equipped with modern audio-visual aids. Industrial Safety, Health and Welfare Centers are also established at these Labour Institutes. Training Centers and Safety Exhibition Centers are also established in some of the inspectorates of dock safety.

Golden Jubilee Celebrations of CLI, Mumbai

The organization completed its 50 years in 2016. On completion of 50 years, the Central Labour Institute, Mumbai, celebrated Golden Jubilee programme on 9th & 10th February' 2016. The celebration was inaugurated by Shri Bandaru Dattatreya, Hon'ble Minister of State for Labour & Employment (Ind. Charge), Government of India by lighting of lamp. The inaugural session was presided over by Shri Shankar Aggarwal, I.A.S., Secretary to Govt. of India, Ministry of Labour & Employment, New Delhi. Dr. Avneesh Singh, Director General, DGFASLI, Mumbai delivered the welcome address on the inaugural session. Shri P.P. Mitra, Principal Labour & Employment Adviser, Ministry of Labour & Employment, New Delhi delivered the Introductory Address and Ms. P. Boonpala, Director, ILO, New Delhi and Dr. Breuer, DGUV, Germany delivered felicitation addresses. A booklet and souvenir "Directorate General Factory Advice Service and Labour Institutes" has been released by the Hon'ble Minister during the session. The inaugural session was concluded with a Vote of Thanks proposed by Shri J.M. Motghare, Director, DISH, Maharashtra.



As a part of the Golden Jubilee Celebrations, a 2-days National Conference on 'Occupational Safety & Health Best Practices' was organized. About 1800 participants from various sectors i.e. Safety professionals, Senior officials associated with industries, ADIS & AFIH alumnus of DGFASLI, students from technical institutes, retired employees of DGFASLI organization, etc. attended the programme.

On 9th Feb, 2016 the following presentations were made:

- a) 'Occupational, Safety & Health in India: Present Scenario, Issues & Challenges' by Speakers Shri H. Vishvanathan, DDG, DGFASLI, Dr. A. K. Sinha, Director, DGMS and Shri J. M. Motghare, Director, DISH, Maharashtra. The session was chaired by Shri P. P. Mitra, PLEA, Ministry of Labour & Employment.
- b) 'OSHE - Best Work Practices : Global perspective' by Speakers Shri Sagar Mhatre, M/s. D.P. World, JNPT, Dr. S. M. Shanbaug, Group Medical Advisor, M/s. RIL and one speaker from DGUV, Germany. The session was chaired by Shri Dr. Breuer, DG, DGUV, Germany.

On 10th Feb, 2016 the following presentations were made:

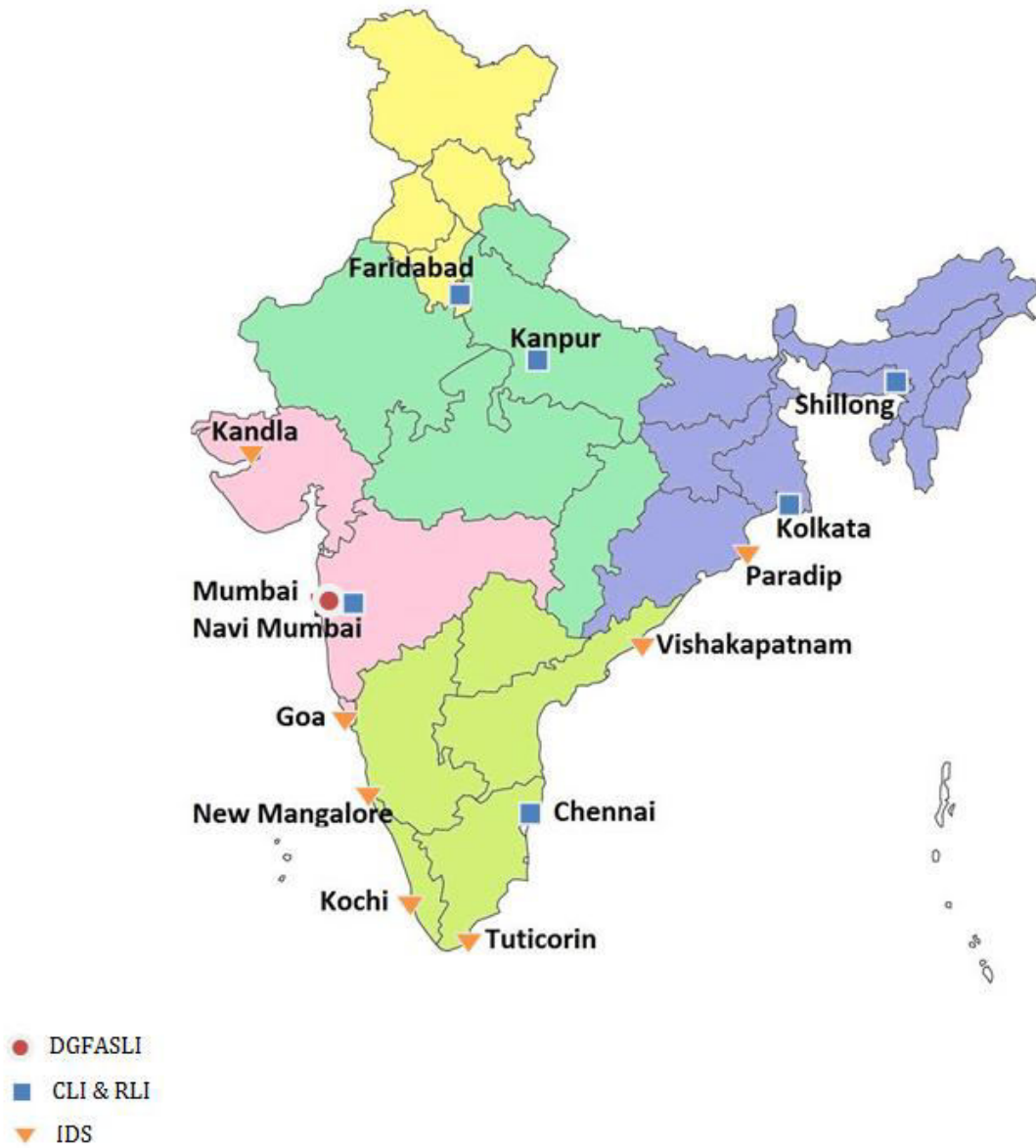
- a) 'OSHE - Best Work Practices in Chemical Sector' by Speakers Shri Nitin Warkhedkar, M/s. HPCL, Dr. Vidya, SRM College, Shri Nishith Dand, M/s. Sure Safety and Shri Visishtha Javkar, M/s. BPCL. The session was chaired by Shri J. M. Motghare, Director, DISH, Maharashtra.
- b) 'OSHE - Best Work Practices in Construction Sector' by Speakers Dr. R.K.Elangovan, DDG, CLI, Shri Bhimgouda Goudar, M/s. Siemens, Shri Vilas Shende, M/s. Godrej Properties and Shri Jeevan Mahadik, M/s. L&T. The session was chaired by Shri Gaikwad, Head (EHS), Shapoorji & Pallonji Group.
- c) 'OSHE - Best Work Practices in Engineering Industry' by Speakers Shri Rajnikant Teli, M/s. Telly Safety Solutions, Shri Arvind Bodhankar, M/s. Tata Motors & Shri Vinay Pathak, M/s. 3M Solutions. The session was chaired by Shri G.Bala Kishore, Director, DISH, Andhra Pradesh.
- d) 'OSHE - Best Work Practices in Port Sector' by Speakers Shri S.N. Borkar, Director (Safety), DGFASLI, Dr. Sameer Golwelkar, Director, M/s. Orient Wire Ropes and Shri Anil Parashar, M/s. APM Terminals. The session was chaired by Shri Neeraj Bansal, Dy. Chairman, JNPT.



As a part of these presentations, discussions between the participants and the faculties were also held. The Occupational Safety, Health & Welfare Exhibition Centre has been renovated by incorporating different models / panels / exhibits of various Divisions like Safety, Docks, IHL, EED, Medicine etc. Shri Bandaru Dattatreya, Minister of State for Labour & Employment, Government of India, inaugurated the newly renovated Occupational Safety, Health & Welfare Exhibition Centre on 9th Feb, 2016 and opened to public. Further a 'Safety demonstration (fall from height)' was conducted by Safety Professionals in front of distinguished guests. Shri Bandaru Dattatreya, Minister of State for Labour & Employment, Govt. of India, also inaugurated the 2-days Exhibition on 'Occupational Safety & Health'. A total of 721 exhibitors, including PPE manufactures, Direct Reading Monitors Manufactures, Rescue Systems Dealers, SAMA, NSC (MC), etc., displayed different models of Safety Gears, Safety Appliances & Equipments. About 1800 persons from various industries / organizations / institutes, etc. visited the 2-days Exhibition



LOCATION MAP OF DGFASLI OFFICES



AREAS OF OPERATIONS



1.4 Human Resource

The human-resource in the organization comprises of Engineers, Medical Doctors, Industrial Hygienists, Industrial Physiologists, Industrial Psychologists, Statisticians, Audio-Visual Experts, and Artists etc. The manpower strength of the organization is as given in Table 1.1 & 1.2.

Table 1.1- Manpower strength of DGFASLI organization as on 01.01.2017

Units	Technical		Administrative		Total	
	Sanctioned	In Position	Sanctioned	In Position	Sanctioned	In Position
Headquarters	11	06	46	34	57	40
CLI Mumbai	49	34	69	47	118	81
4 RLIs	61	60	80	21	141	81
11 IDSs	28	15	28	14	56	29
Total	149	115	223	116	372	231

Manpower strength of DGFASLI

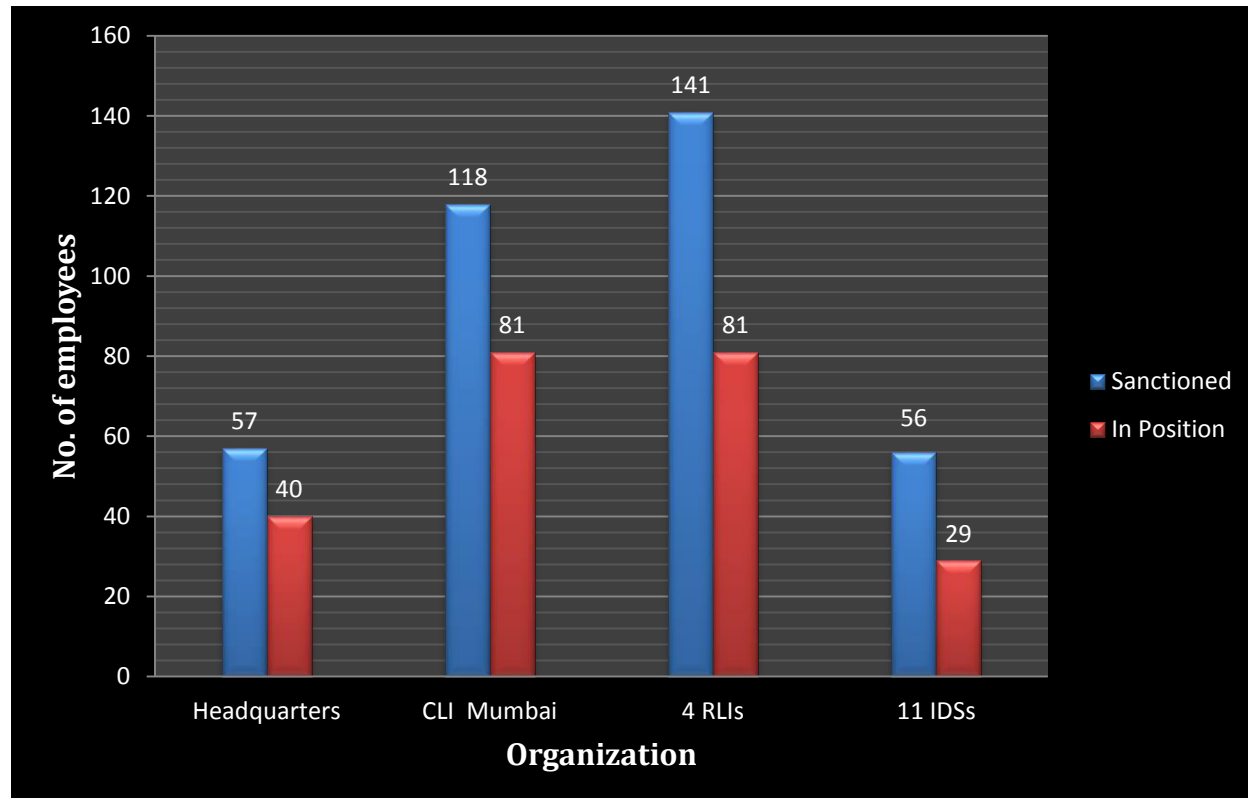
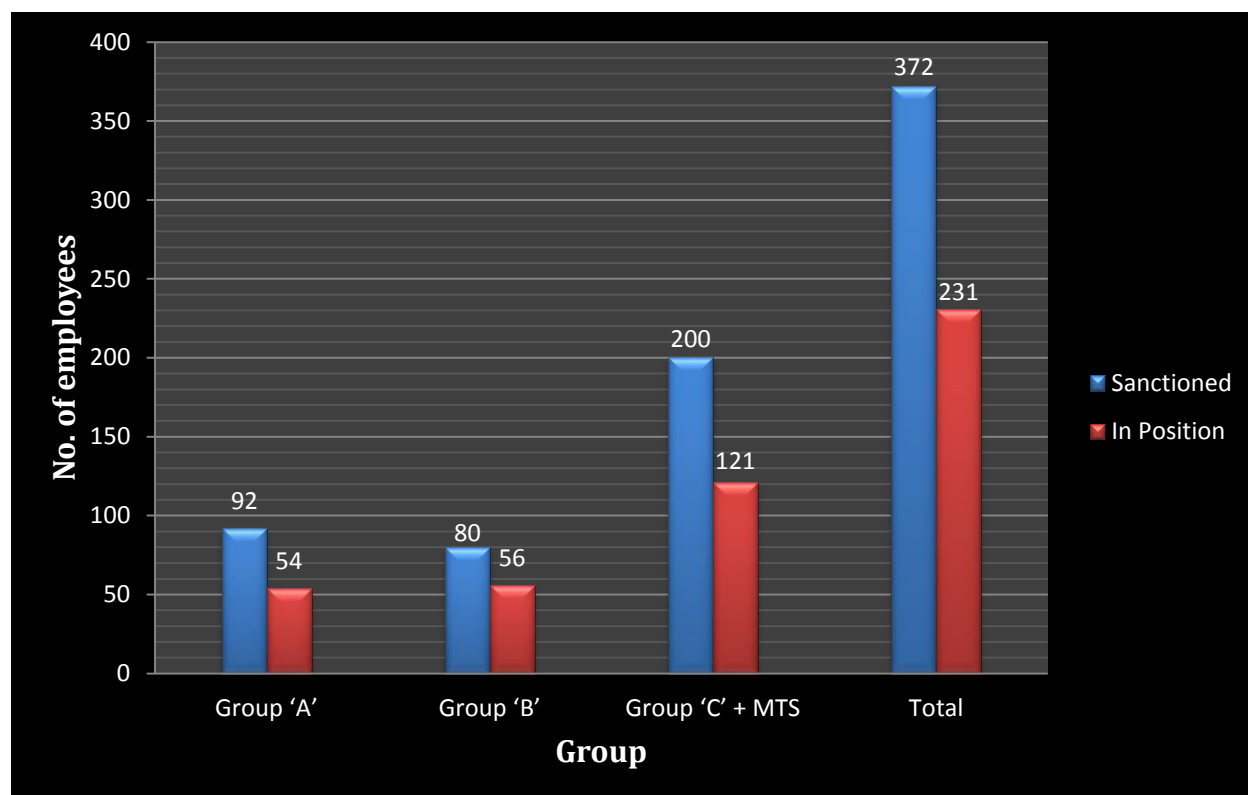


Table 1.2: Group wise Manpower strength of DGFASLI organization as on 01.01.2017

Group	Sanctioned	In Position
Group 'A'	92	54
Group 'B'	80	56
Group 'C' + MTS	200	121
Total	372	231

Group wise Manpower strength of DGFASLI

2

Budget

The allocation of funds for various constituents and plan schemes of the organization for the years 2016-17 and 2017-18 are given below:

(Rs. in Crores)

Sl. No.	SCHEMES	Revised Estimates 2016-17	Budget Estimates 2017-18
A. NON-PLAN			
1.	DGFASLI & IDS	808	953.50
2.	Research & Training (CLI & RLIs)	1355	1534.50
Total (NON-PLAN)		2163	2488
B. PLAN			
1.	Development of Regional Labour Institute, Faridabad as National Centre of Excellence	319.50	526
2.	Strengthening of DGFASLI Organization and OSH in Factories, Ports and Docks	738.50	1700
3.	Development of RLI, Shillong	2	4
Total (PLAN)		1060	2230
GRAND TOTAL (NON-PLAN)+ (PLAN)		3223	4718

3

Plan Schemes

During the FY 2015-2016, three Plan Schemes under the XIIth Five Year Plan have been taken up by DGFASLI for implementation, namely:

1. Development of Regional Labour Institute, Faridabad as Advanced Centre of Safety Systems for MSME and Chemical Process units
2. Strengthening of DGFASLI organization and OSH in Factories Ports & Docks.
3. Establishment of Regional Labour Institute at Shillong for North East Region.

3.1 Plan Scheme I:

Development of Regional Labour Institute, Faridabad as Advanced Centre of Safety Systems for MSME and Chemical Process units

Objectives:

1. The objective of the Scheme is to develop Regional Labour Institute, Faridabad as an advanced center of Safety Systems to meet the specialized needs of MSMEs and Chemical Process Industry.
2. Development of Advance Training Center, Advance Research Center and Awareness Center for carrying out the technical activities of the Center of Excellence.
3. To develop wide spectrum Door-step Facility to impart knowledge, skills and develop awareness among the work-force and owner-managers of MSMEs.

Table 3.1: Targets & Achievements (January to December 2016)

Sl. No.	Activities	Targets	Achievements
1.	Creation of Posts	NIL	NIL
2.	Setting up of Centres/Laboratories	01	-
3.	Short & Long duration training programmes / In plant training programmes	06	05
4.	One year post Diploma Course in Industrial Safety for Safety Officers	01	01
5.	3 month course-Associate Fellow of Industrial Health (AFIH)	01	01
6.	One month specialized Training course	01	-
7.	Training programme for small and medium enterprises	02	-
8.	Research/Studies/Surveys/Safety Audits	08	12
9.	National Seminars/ Conferences/Workshops	02	02
10.	Publications	02	01
11.	Talks	-	04
12.	Awards	02	02

Note: *: Cannot be quantified; -: Not available

3.2 Plan Scheme II: Strengthening of DGFASLI Organization and OSH in Factories, Ports & Docks

Objectives:

To strengthen the infrastructure facilities at DGFASLI organization including Central Labour Institute at Mumbai & Regional Labour Institutes located at Chennai, Kanpur & Kolkata, and Inspectorates Dock Safety at the eleven major ports for improving occupational safety and health status of workers in factories, ports and docks throughout the country thereby contributing to prevention of occupational injuries and diseases.

Table 3.2: Targets & Achievements (January to December 2016)

Sl. No.	Activities	Targets	Achievement
1.	a) Upgradation of Laboratories	*	-
	b) Development of Application Programmes and databases	*	-
	c) Material Safety Data Sheet (MSDS) on request	*	-
	d) Industry-wise safety and health information	*	42
	e) INDOSHNEWS Publication	@	@
	f) Publication of Manuals, brochures, etc	*	25
2.	Conduction of specialized training programmes, seminars, workshops	30	28
3.	Conduction of studies/surveys/audits	32	27
4.	Enforcement activities in major ports (inspection of ships, container ship, loose gears, docks, container yards, hazardous installations, etc.)	1500	1578
5.	Testing of Respiratory & Non Respiratory PPE	750	516

Note: *: Cannot be quantified;

@: It is decided to replace the INDOSHNEWS Publication by Indian Journal of OSHE publication and registration process for the new journal has been initiated.

3.3 Plan Scheme III:**Establishment of Regional Labour Institute at Shillong for North East Region****Objective:**

The objective of the scheme is to cater to the needs of the North-Eastern Region in the areas of Occupational, Safety & Health which at present, due to the heavy workload of the Regional Labour Institute, Kolkata, are not effectively met.

Table 3.3: Targets and Achievements (January to December 2016)

Sl. No.	Activity	PHYSICAL	
		Targets	Achievements
1.	Approval of SFC Proposal	*	SFC approval obtained.
2.	Acquiring Land	*	Foundation stone was laid by Hon'ble Minister of State (IC) for Labour and Employment, Shri Bandaru Dattatreya.
3.	Getting architectural design from CPWD and getting cost estimate	*	Architecture design approved and provisional estimate obtained from CPWD, Shillong.
4.	Start of Construction Work	*	On approval of estimate from Ministry, the work order will be forwarded to CPWD for commencement of construction work.

* Cannot be quantified

4

Safety & Health Improvement in Factories, Docks and Construction

4.1 Co-ordination in the Administration of the Factories Act, 1948

The Factories Act, 1948 is the principal and comprehensive legislation of the Parliament, which provides for the requirements concerning safety, health and welfare amenities needed by workers employed in factories. The provisions of the Act are applicable to the factories as defined under Section 2m (i), 2m (ii) or notified under Section 85 of the Act by the State Governments.

The Ministry of Labour and Employment is accountable to the Parliament for proper enforcement of the Act. Uniformity in the application of the provisions of the Act in the State/Union Territories is achieved by circulating the Model Rules prepared by DGFASLI, which are incorporated by states in their State Factories Rules with necessary modifications to suit local needs. In the task of framing of the Model Rules, the DGFASLI, on behalf of the Ministry of Labour and Employment, enlists the cooperation and involvement of the State Governments by convening annually a Conference of Chief Inspectors of Factories. Matters relating to the administration of the Act as well as proposed amendments are discussed in this conference. Besides, this conference also serves as a forum for discussion on the progress made in the application of techniques and methods for prevention of accidents and ill-health in factories.

4.2 During the year 2016, comments/clarifications/replies/materials were prepared on the following matters:

Table-4.1: comments/clarifications/replies/materials prepared

Sl. No.	Comments/ Clarifications / Replies/ Materials	Nos.
1.	Matters regarding Factories Act,1948	04
2.	Matters regarding ILO Conventions/ILO meetings	04
3.	Matters relating to Parliament Questions and Parliamentary Standing Committee on Labour Meetings	51
4.	Matters regarding Court Cases	06
5.	Other Important Matters	29

4.3 Implementation of the Right to Information Act, 2005

- The enactment of Right to Information Act, 2005, is a gateway for the citizens to seek information under the control of Public Authority and promote transparency and accountability.
- DGFASLI being one of the Public Authorities, the C.P.I.O. of the organization received a total no. of 137 applications during the period January to December, 2016. Out of which 110 applications were received under section 6(3) of the RTI Act (i.e. transferred from other public authority) and 27 applications were received directly. Besides, 19 applications were brought forward from the 3rd quarter of 2016 (Oct. – Dec., 2016).
- A total of 153 applications were considered during the year. Information was provided within the stipulated time frame to 127 applications and 8 applications were transferred to other public authorities under section 6(3) of the RTI Act. Among the total applications received, 8 applications were carried forward to next year and 3 applications were rejected.
- An amount of Rs. 356/- was received during the period as application fees and cost of providing information in material form.
- The Appellate Authority of DGFASLI received a total number of 14 appeals during the period. A total of 11 appeals were considered during the period and all were disposed off within stipulated time frame while 3 appeals were forwarded to next year.

4.6 Administration of the Dock Workers (Safety, Health and Welfare) Act, 1986 and Regulation framed there under and the Environment (Protection) Act, 1986 and Rules framed there under

The Dock Workers (Safety, Health and Welfare) Act, 1986 and the Regulations 1990 framed there under cover safety, health and welfare aspects of all the workers engaged in dock work, whether in loading or unloading of cargo on board the ship, alongside it or in transit sheds, warehouses or yard etc., within the port premises including those engaged in chipping and painting of ships. These statutes are in line with the ILO Convention No. 152 on Occupational Safety and Health (Dock Work).

Administration of the Act and the Regulations in major ports is carried out by the Ministry of Labour and Employment, through DGFASLI, Mumbai. The Director General is the Chief Inspector of Dock Safety appointed under the Act. The Chief Inspector of Dock Safety is also an authority for enforcement of the Manufacture, Storage and Import of Hazardous Chemicals Rules, 1989 framed under the Environment (Protection) Act, 1986 in the major ports.

The above statutes are enforced by the Inspectors posted at Inspectorate of Dock Safety at all the major ports viz. Mumbai, Kolkata, Chennai, Kandla, Mormugao, New Mangalore, Cochin, Tuticorin, Visakhapatnam, Paradip and Jawaharlal Nehru Port except Ennore where the Inspectorate is being set up. Presently, the enforcement in this Port is carried out by the Inspectors posted in

Inspectorate Dock Safety, Chennai. Inspectors also enforce the Marking of Heavy Packages Act, 1951 and Rules framed there under in the major ports.

The main function of the Inspectorates is to ensure the compliance with the provisions under the statutes. The statutory responsibilities of Inspector include inspection of ships, tankers, loose-gears, container-handling equipment, docks, container-yard and terminal, hazardous installations and isolated storages, tanks; carrying out the investigation of accidents (fatal and serious) and dangerous occurrences; prosecution of employers, attending to complaints, providing advisory services and conducting safety promotional activities like training programmes, workshops, celebration of safety week etc. The Inspectorate also prosecutes the agency responsible for serious violation of any provision of the Act and Regulations framed there under.

National Workshop

The 7th National Workshop on emerging trend in Testing Examination certification of Lifting Appliances, Loose Gears and Wire Ropes for Competent Persons was organized & conducted on 21.10.2016 at Mazgaon Dock Shipbuilders Ltd. Mumbai. The work shop was inaugurated by Dr. Avneesh Singh, Director General & CIDS, DGFASLI. The workshop was attended by competent persons from all over India and DGFASLI/IDS Officials.



4.7 Safety Week Celebrations and Dock Safety Committee Meetings

During the year 2016, Safety Week Celebrations were held at the Ports of Mumbai, Kolkata, Paradip, Visakhapatnam, Kochi, New Mangalore, J. N. Port, and Tuticorin. Total 9 Safety Week Celebrations were held during the period. Various safety promotional activities like safety poster competitions, safety quiz contest, first-aid and fire fighting demonstrations and appreciation programmes were organized during the occasions for the benefit of dock workers and their families

During the year 2016 a total of 41 Dock Safety Committee Meetings were held at all the 11 major Ports - Mumbai, Kolkata, Chennai, Kandla, Mormugao, Tuticorin, New Mangalore, Cochin, Visakhapatnam, Paradip and Jawaharlal Nehru Port. Port-wise details of Safety Week Celebrations and Dock Safety Committee Meetings are given in Table. 9.8.

The 13th Meeting of the Advisory Committee constituted under the Dock Workers (Safety, Health & Welfare) Act, 1986 was held on 07.12.2016 at DGFASLI, Mumbai. The members from Employees, Employers and DGFASLI officers attended the meeting. The agenda covered various issues related to Safety, Health & Welfare of dock workers working in major ports of the country. Also, other subjects such as working environment, health check up, safety training, etc. was discussed.

4.8 Safety and Health in Construction Sector

The Building and Other Construction Workers Act (BOCW Act) (Regulation of Employment and Conditions of Service) was enacted in 1996. The Central Government is the appropriate authority for notifying the rules and regulations under the Act as well as the enforcement of the provisions under the said Rules, in respect of establishments in relation to which Central Government is the appropriate authority under the Industrial Disputes Act, 1947. In respect of other establishments, the State Government is the appropriate authority for notifying the Rules and enforcing the provisions. In respect of other establishments, the State Government is the appropriate authority for notifying the Rules and enforcing the provisions. DGFASLI at the behest of the Ministry of Labour and Employment had done the entire work of drafting the BOCW Act 1996 as well as framing of the Central Rules of 1998 made there under. The Director General, DGFASLI is a member on the Central Advisory Committee constituted under Rule 10 of the Central Rules of 1998. DGFASLI was entrusted with the task of processing applications in respect of approval of Competent Persons under Rule 2(j) of the Central Rules, 1998.

4.9 Studies and Surveys

(a) National Studies and Surveys are conducted by DGFASLI in its efforts towards helping the Central Government to ascertain the status of working conditions, safety and health in factories and docks, and to formulate the appropriate standards for inclusion in statutes. During the year 2016, three Safety and Health Surveys under Section-91A of the Factories Act, 1948 in respect of accident prone factories have been conducted by DGFASLI. The details of National level studies and surveys undertaken during the year 2016 are given in Table 4.2

Table 4.2-National Level Studies and Surveys undertaken during 2016

Sl. No.	National level Studies and Surveys	Co-ordinating body
1.	National study on "Hearing Conservation programme" at Century Rayon, Shahad on 22.03.2016 and V.H.M. Industry, Bhiwandi on 23.03.2016	CLI, Mumbai
2.	Occupational Health Audit at John Deere Pvt. Ltd., Pune in May' 2016	CLI, Mumbai
3.	National Survey on Occupational Safety & Health (as per Section 91-A of the Factories Act, 1948) in silicosis affected areas in India wrt to the implementation of the order of the Hon'ble Supreme Court.	CLI, Mumbai RLI, Chennai RLI, Faridabad RLI, Kolkata

(b) State Level Studies and Surveys are conducted in the State in certain priority areas to ascertain status of Safety Health and Environment at work place. During the year 2016, nine State Level Studies and Surveys have been conducted by DGFASLI and the details of State level studies and surveys undertaken during the year 2016 are given in Table 4.3.

Table 4.3-State Level Studies and Surveys undertaken during 2016

Sl. No.	State Level Studies and Surveys	Co-ordinating body
1.	Walk through Inspection & Sampling of quartz dust in quartz grinding units at Rajasthan (Total 12 Nos. quartz grinding units covered at Jaipur, Dausa and Kishangarh and Ajmer district, Rajasthan) by RLI, Kanpur	RLI, Kanpur
2.	Study on Quartz exposure in quartz grinding units in Jaipur, Dausa & Ajmer Districts of Rajasthan state (Total 15 nos. quartz grinding units covered at Jaipur, Dausa and Kishangarh and Ajmer regions, Rajasthan) by RLI, Kanpur	RLI, Kanpur

c) Unit Level Consultancy Studies are undertaken at the request of the management and reports are submitted for implementation of the recommendations for further improvement in factories concerned. The details of Unit level consultancy studies and audits undertaken during the year 2016 are given in Table 4.4. Institution-wise details of Unit level Consultancy studies are given in Annexure - I

Table 4.4-Unit level Consultancy Studies and Audits undertaken during 2016

Sl. No.	Title	Started in 2016	Completed in 2016
1.	Consultancy Study	1	-
2.	Fire Safety Audit	-	1
3.	HAZOP study	2	4
4.	Industrial Hygiene Study	3	1
5.	Industrial Hygiene Survey	1	-
6.	Noise Survey	1	-
7.	Occupational Health Audit	-	1
8.	Safety Audit	11	13
9.	Study on Evaluation of Asbestos Fibre Levels	-	1
10.	Testing of the Quality of Compressor Breathing air	4	4
11.	Workplace Environment Monitoring Study	11	5
Total		34	30

4.10 Education and Training

DGFASLI organized workshops, seminars, training programmes etc. for the benefit of industries, ports, enforcement officials, etc.

4.10.1 Seminars & Workshops

Seminars & Workshops are organized on the basis of findings and recommendations of various national studies; unit level studies and surveys; and issues and priorities of national concern. They are organized to enhance the skills of the participants in dealing with matters connected to safety, health, productivity and environment etc. These seminars & workshops provide platform for discussing various issues related to safety and health; and recommend National level/ State level/ Unit level action plan in respective area of concern.

The details of Seminars & Workshops conducted during the year 2016 are given in Table 4.5.

Table 4.5- Seminars & Workshops conducted during 2016

Sl. No.	Title	Venue	Date	No. of Participants	No. of Organizations
1.	National Conference on "Occupational Safety and Health – Best Practices"	CLI, Mumbai	09/02/2016	1800	721
2.	Workshop on Safety in Container Handling	RLI, Chennai	07/03/2016	51	2
3.	Specialised Workshop on Reporting of Investigation & Analysis of Accidents	RLI, Chennai	11/03/2016	26	1
4.	Workshop on Accident Prevention	HDC Training Centre, Haldia	15/03/2016	17	6
5.	Workshop on ILO Radiograph on Pneumoconiosis with special emphasis on Asbestosis	CLI, Mumbai	27/04/2016	11	10
6.	Workshop on Testing & Examination of Lifting Machinery, Tackles & Pressure Vessels	RLI, Kanpur	28/04/2016	26	24
7.	Three days Workshop on Industrial Hygiene & work Environment Monitoring	RLI, Kanpur	25/05/2016	28	15
8.	3 days training workshop on 'Incident/Accident Reporting Investigation & Analysis'	CLI, Mumbai	08/06/2016	18	12
9.	Workshop on Industrial Hygiene technique	CLI, Mumbai	15/06/2016	22	8
10.	National Seminar on "Process Safety Management System" and Golden Jubilee Celebration	RLI, Chennai	26/07/2016	257	94
11.	Workshop on Hazard & Operability	RLI, Kanpur	28/07/2016	54	34
12.	Workshop on Building, Safety & Health culture in the organization	RLI, Faridabad	19/07/2016	28	16
13.	Four Days Training Workshop on Internal Safety Audit	CLI, Mumbai	27/09/2016	25	19
14.	Two days Training-cum-Workshop on Safety Audit	RLI, Chennai	29/09/2016	54	31
15.	Workshop on ILO Radiograph on Pneumoconiosis with special Emphasis on Silicosis	CLI, Mumbai	14/09/2016	27	16
16.	The 7th National Workshop on emerging trend in Testing Examination certification of Lifting Appliances, Loose Gears and Wire Ropes for Competent Persons	IDS, Mumbai	21/10/2016	105	94
17.	Three days workshop on HAZOP, Hazard & Operability study	CLI, Mumbai	05/10/2016	19	10
18.	Workshop on Hazard & operability study (Hazop)	RLI, Faridabad	05/10/2016	26	18
19.	Workshop on Hazard Identification & Risk Assessment	RLI, Kanpur	08/12/2016	58	28
Total				2652	1159

4.10.3 Details of some of the seminars and workshops conducted during the year 2016 are given below:

1. The 7th National Workshop on emerging trend in Testing Examination certification of Lifting Appliances, Loose Gears and Wire Ropes for Competent Persons was organized & conducted on 21.10.2016 at Mazagaon Dock Shipbuilders Ltd. Mumbai. The workshop was inaugurated by Dr. Avneesh Singh, Director General & CIDS, DGFASLI. The workshop was attended by competent persons from all over India and DGFASLI/IDS Officials.
2. Regional Labour Institute, Faridabad organized a two days Workshop on “Building Safety & Health culture in the organization” for the Executives/Managerial Staff, Supervisors of Industries on 19th & 20th of July, 2016. A total of 28 participants from 16 organizations attended the workshop.
3. Regional Labour Institute, Faridabad organized a two days Workshop on “Hazard & operability study (Hazop)” for the Executives/Managerial Staff, Supervisors of Hazardous Industries on 5th & 6th of October, 2016. A total of 26 participants from 18 organizations attended the workshop.
4. Regional Labour Institute, Kanpur organized a two days Workshop on “Testing & Examination of Lifting Machinery, Tackles & Pressure Vessels” on 28th & 29th of April, 2016. A total of 26 participants from 18 organizations attended the workshop.
5. Regional Labour Institute, Kanpur organized a two days Workshop on “Hazard & Operability study” on 28th & 29th of July, 2016. A total of 54 participants from 34 organizations attended the workshop. This workshop was conducted to provide inputs require for identifying and controlling of various hazards and help the management in creating the safe, healthy and comfortable work environment for better productivity.
6. Regional Labour Institute, Kanpur organized a two days Workshop on “Management of Hazardous substances” on 6th & 7th of October, 2016. A total of 72 participants from 42 organizations attended the workshop. This workshop was conducted to provide comprehensive information on legal provisions, various aspects relating to the handling, storage, transportation and disposal of hazardous substances and their impact on health, safety and remedial measures.
7. Regional Labour Institute, Kanpur organized a two days Workshop on “Hazard Identification & Risk Assessment” on 8th and 9th of December, 2016. A total of 58 participants from 28 organizations attended the workshop. This workshop was conducted to provide inputs required for indentifying and controlling of various work environments for better productivity.
8. The Industrial Medicine Div., CLI, Mumbai organized a workshop on ILO Radiograph on Pneumoconiosis with special emphasis on Asbestosis. It was held from 27.04.2016 to 29.04.2016. A total of 11 participants from 10 organizations attended the workshop. The objective of the workshop is to regularly update the information on Occupational Health so that knowledge and skills of doctors are appropriately strengthened for better occupational health management of workers. Factory medical officers, medical officers of enforcement agencies and other medical professionals engaged in health care of the asbestos related industries will be benefited most by this workshop. It is expected that

medical officers shall be able to develop the appropriate strategies for the occupational health protection of the workers engaged in asbestos related works, diagnosis and better compliance of rules. Evaluation of the X-ray chest and codify it according to the ILO radiograph is one of the most important objective of this workshop.

9. The Industrial Medicine Div., CLI, Mumbai organized a workshop on ILO Radiograph on Pneumoconiosis with special emphasis on Silicosis. It was held from 14.09.2016 to 16.09.2016. A total of 27 participants from 16 organizations attended the workshop. This workshop is conducted mainly for Factory Medical Officers, Medical Officers of enforcement agencies and other Medical Professionals engaged in health care of the free silica dust related industries. On completion of the work shop, it is expected that the medical officers shall be able to develop the appropriate strategies for occupational health protection of the workers engaged in free silica related works, diagnosis and prevention of Silicosis, evaluation of the ILO Radiograph on Pneumoconiosis and better compliance of rules.

10. The Golden Jubilee Celebration and National Seminar on "Process Safety Management System" was held at RLI, Chennai on 26.07.2016, wherein Dr. R. K. Elangovan, Deputy Director General, DGFASLI was invited as the Chief Guest and he has delivered the Inaugural address. Gp. Capt. Vijayakumar, President, Madras Management Association, Chennai was invited and he delivered the Key note address. The Special address was delivered by Shri P. Bose, Director of Industrial Safety and Health, Government of Tamil Nadu who was also invited for the Seminar.
Followed by inauguration, the seminar continued with the technical presentations by subject experts on various topics which includes "Regulatory Aspects of Process Safety Management" by Dr. R. K. Elangovan, Deputy Director General, DGFASLI, Mumbai. "An Overview of Process Safety Management " by Shri B.V. Ramabrahmam, Head, Chemical Engineering Div., CLRI, "Incident Investigation" by Shri Devarajan, Safety consultant and "Process Safety Information & Process Hazards Analysis (PHA)" by Shri K. Pandurangan, General Manager (Rtd), Chemplast Sanmar.
After the Seminar, the Certificate Awarding function of the 34th batch of DIS students was commenced at 4.30 pm on 26.07.2016 followed by felicitation of retired officials of RLI, Chennai. The function ended with a cultural program at 8.30 pm.
During the Certificate awarding function, inaugural address was delivered by the Chief Guest Dr. R. K. Elangovan, Deputy Director General and the Key Note address was delivered by Dr. Kanmani, Professor, Centre for Environmental Studies, Anna University. At the end of Golden Jubilee celebration, Certificates were distributed to the students by the Chief Guest Dr. R. K. Elangovan, Deputy Director General. He also presented mementos to retired officials of RLI, Chennai.





11. A training-cum-workshop on Safety Audit was organized at RLI, Chennai from 29.09.2016 to 30.09.2016. In all 54 participants from 31 organizations attended it. Safety Audit is an effective technique to assess the above objectives. Therefore, the Safety Audit system in a company will certainly help the management to reduce the operational risk and the consequent liabilities including property damage and business interruptions. In the light of Safety Audit findings, corrective measures taken by the company assume greater importance in the present context and enable the organization to review and update their

control measures. The status of the plant on safety performance is sought to be audited for the compliance of the statutory requirements, Codes of Practices, National and International Standards of Safety, Plant Safety Rules and Regulations and also other relevant safe practices, developed by the plant. Apart from the Safety Audit being conducted by the external agencies, it is essential that the plant personnel themselves carry out this Safety Audit periodically and assess their safety performance. For this purpose, it is essential that all the concerned entities are made familiar with the details, methodology and approach to the Safety Audit.

4.10.4 Long Duration Training Programmes

Long Duration Training programmes include Professional Programmes and Specialised Training programmes. The details of Long Duration Training Programmes conducted during the year 2016 are given in table 4.7 and the Institute-wise details of Long Duration Training Programmes are given in **Annexure – II**

a) Professional Programmes: To fulfill the need of qualified Safety Officers, and Factory Medical Officers in the industry, DGFASLI organization conducts one year “Advance Diploma in Industrial Safety” (ADIS) Course and three months “Associate Fellow of Industrial Health” (AFIH) Certificate Course respectively. In order to meet the demands of supervisors competent to handle and supervise hazardous processes in industries, a “One Month Certificate Course in Industrial Safety & Health” was started at CLI Mumbai as well as RLI Kolkata, Kanpur and Chennai. During the year 2016, a total of 7 professional programmes were conducted by DGFASLI and a total of 297 participants from 241 organizations benefitted from these programmes.

b) Specialised Training Programmes are conducted for identified target groups such as Inspectors of Factories Senior Managers, Safety Officers, Factory Medical Officers, Supervisors, Trade Union Officials and Safety Committee members from Industry. Basic course for inspectors of factories who are freshly recruited is conducted to impart technical knowledge and skills in the field of safety and health. In view of the need for inspection of specific industries and Major Accident Hazards units, specialised courses are also conducted for senior inspectors. Some of the programmes are exclusively conducted for the union-leaders where joint participation of management personnel and union representatives from industries are the special features of some programmes. During the year 2016, a total of 34 specialised training programmes were conducted by DGFASLI and a total of 577 participants from 253 organizations benefitted from these programmes.

Table 4.7: Long Duration Training Programmes conducted during 2016

Programme/ Area	No. of Participants	No. of Organizations
A. Professional Programmes [Total:(a+ b +c)]	275	227
a) ADIS	202	160
b) AFIH	63	59
c) One-month Certificate Course for Supervisory Personnel in hazardous processes Industries	10	8
B. Specialised Training Programmes [Total: (I +II + III +IV + V + VI+VII)]	577	253
I. Programme for Inspectors of Factories [Total: (a+ b +c)]	47	20
a) Basic course	12	2
b) Refresher Course	13	13
c) Chemical Safety	22	5
II. Programme for Management Personnel [Total:(a to r)]	337	156
a) 3- days training Programme on 'Internal Safety Audit'	17	13
b) 5- days training programme on "Identification, Evaluation and Control of Hazards in Industries"	34	15
c) 5 days training programme on "Safety & Health Awareness in Ferrous and Non-Ferrous Metals & Paper Industries"	14	4
d) 3 days training programme on "Safety, Health & Environment in Factories, Ports and Construction Industries"	14	4
e) Training programme on Environmental Hazards & its Management in Industries	24	10
f) 5 days training programme on "Safety & Fire Management in Factories, Ports, Construction Industries"	33	15
g) 3-days collaborative Trg. Prog. With NSC-Maharashtra Chapter on "Safety Management"	20	10
h) 5 days training programme on "Safety & Health Awareness in Construction Industry"	13	7
i) Training programme on "Environmental Hazards & their management at work place"	13	7
j) Training Programme on Safe handling of chemicals for safety committee members	22	5
k) 5 days training programme on "Identification, Evaluation and Control of Hazards in Industries"	38	12
l) 4-days Trg. Prog. On 'Safe Use of Lifting Machine & Tackles'	26	19
m) Management of workplace hazard in industry	12	5
n) Training programme on safety and health management	5	4

in process industries		
o) 214th Training Course in Industrial Safety for National Safety Council, Maharashtra Chapter	25	13
p) Recognition and evaluation of chemical hazards at work place	15	7
q) Selection and quality assurance of PPE	12	6
III. Programme for Management Personnel and Factory Supervisors	32	15
a) Productivity & Quality Improvements through Effective Employees Participation in SHE	8	4
b) 215th Training Course in Industrial Safety for National Safety Council – Maharashtra Chapter	24	11
IV. Programme for Factory Supervisors [Total:(a to b)]	61	18
a) Participative Skills in Safety, Health & Environment For Safety Committee Member	9	1
b) Industrial Hygiene Techniques	7	6
c) Inspection & Testing of LA & LG	11	2
d) Environmental hazards and their management at workplace	14	6
e) 5 days training programme in Safety Audit	10	2
f) 5 days training programme on “Safety in Storage, Handling and Management of Hazardous Chemicals	10	1
V. Programme for Trade Union Leaders/Workers/Joint Participation [Total:(a to c)]	56	11
a) Participative Skill for safety Committee member in Safety, Health & Environment in Industries	23	2
b) Participative Skill for safety Committee member in Safety, Health & Environment in Industries	7	2
c) Team Building for Safety, Health & Environment at Work Place	9	3
d) Productivity and Quality Improvement through Effective Employees Participation in Safety, Health and Environment	17	4
VI. Programme for Medical Doctors	15	14
a) Advanced Refresher Course on Occupational and Environmental Health for Medical Doctors from 08 - 12 August 2016	15	14
VII. Programme for Paramedical Professionals	29	19
a) Training Programme on Occupational Health practice for Nurses, Health/Medical assistant	29	19
Grand Total: (A+B)	852	480

4.10.5 Need Based In-Plant Training Programmes

On the request of management, various disciplines of DGFASLI conduct in-plant need based training programmes for the benefit of cross-section of personnel from respective units. Such programmes are designed after proper identification of needs of the defined target through preliminary discussions with the managements. During the year 2016, a total of 10 in-plant training programmes were conducted by DGFASLI and a total of 348 participants from 10 organizations benefitted from these programmes. The details of Need based in- plant Training Programmes conducted during the year 2016 are given Table 4.8. Institution-wise details of Need based in- plant Training Programmes are given in **Annexure - III**

Table 4.8: Need based in- plant Training Programmes conducted during 2016

Programme/ Area	No. of Programmes	No. of Participants	No. of Organizations
I. Programme for Management Personnel [Total:(a to g)]	7	233	7
a) Behaviour based Safety	1	40	1
b) Inplant Training programme on Safety Audit	1	20	1
c) Training programme on Safety Management	1	35	1
d) Accident Reporting & Investigation	1	43	1
e) Behaviour Based Safety	1	30	1
f) Electrical Safety	1	32	1
g) Industrial Hygiene and work Environment Monitoring	1	33	1
II. Programme for Factory Supervisors [Total:(a to c)]	3	115	3
a) Static Electricity Safety	1	25	1
b) Occupational Safety and Health Awareness in Workplaces	1	40	1
c) 1-day In-plant training programme on "Fire Prevention and usage of personal protective equipments"	1	50	1
Grand Total: (I +II)	10	348	10

4.10.6 Short Duration Training Programmes

DGFASLI organizes short duration training programmes of 1 or 2 days duration for the benefit of supervisors, workers, and workers representatives from factories. Such programmes are organized in the field of Safety, Health, Hygiene, Psychology, etc. During the year 2016, a total of 30 specialised training programmes were conducted by DGFASLI and a total of 629 participants from 192 organizations benefitted from these programmes. The details of short duration training programmes conducted during the year 2016 are given in Table 4.9. Institution-wise details of short duration training programmes are given in **Annexure -IV**

Table 4.9: Short Duration Training Programmes conducted during 2016

Programme/ Area	No. of Programmes	No. of Participants	No. of Organizations
I. Programme for Management Personnel [Total:(a to m)]	12	272	101
a) One Day Training Programme on Safety & Health for the Safety committee members of Honda India Ltd, Manesar, Gurgaon	1	10	1
b) Training programme on Management of Hazardous Substances	1	32	16
c) Two days training programme on "Industrial Hygiene in Industries"	1	14	8
d) 1-day Trg. Prog. On 'Safety Mgt'. for Shop floor Managers	1	45	1
e) Two days Training programme on "Occupational Safety and Health Management System"	1	28	14
f) Training programme on Management of Hazardous substances	1	43	20
g) Training Programme on Work Environment Monitoring	1	19	14
h) Training on safety for Safety Committee members & safety coordinators	1	29	1
i) Occupational Health Safety in Industry	1	16	16
j) Occupational Safety & Health in Factories Manufacturing Asbestos products	1	14	1
k) Training programme on Safety and Health in Engineering Industries	1	15	8
l) Safety Awareness Programme	1	7	1
II. Programme for Supervisor [Total:(a to f)]	3	34	10
a) OSH FOR Stevedoring Personnel	1	14	4
b) Salient features of Dock Safety Statues	1	15	4
c) Provision of Dock Workers (Safety, Health and Welfare) Act, 1986 & Regulations, 1990 & Safe use of LA&LG	1	5	2
III. Programme for Worker	1	5	1
a) Provisions of Dock Safety Statues pertaining to Safe use of LA & LG	1	5	1
IV. Programme for Trade Union Leaders/Workers/Joint Participation [Total:(a to h)]	8	101	29
a) OSH for Stevedoring Companies	1	10	4
b) Road Safety	1	16	3
c) OSH Personnel Stevedoring Companies	1	11	6

d) Road Safety	1	12	3
e) OSH for Personnel of Stevedoring Companies	1	12	6
f) Road Safety with vehicular & Equipment movement	1	16	3
g) Road Safety	1	17	3
h) Safety in cargo handling	1	7	1
V. Programme for Management Personnel & Supervisor	2	78	45
a) Training programme on Asbestos and Silica management	1	6	3
b) Training programme on Management of Hazardous substances	1	72	42
VI. Programme for Educational Institute [Total:(a to b)]	4	139	6
a) Industrial Safety	1	28	1
b) Safety Awareness Programme	1	50	1
c) ADIS students-Industrial Hygiene Laboratory visit	1	25	2
d) ADIS students-Industrial Hygiene Laboratory visit	1	36	2
Grand Total: (I+II+III+IV+V+VI)	30	629	192

4.10.7 Appreciation and Promotional Programmes

Each of the Labour Institutes at Mumbai, Kolkata, Kanpur, Chennai and Faridabad has an Industrial Safety Health and Welfare Centre, where half day appreciations programmes are conducted. Appreciation Programmes are also conducted at various laboratories and divisions of the organization. The details of appreciations and promotional programmes conducted during the year 2016 are given in Table 4.10.

Table 4.10: Appreciations and Promotional Programmes conducted during 2016

Sl. No.	Description	No. of Programmes	No. of Beneficiaries	No. of Organization
1.	Appreciation Programmes	164	4227	275
2.	Executives' visit	1	11	1
3.	Industrial Hygiene Laboratory visit	1	1239	39
4.	Introduction and Demonstration of Environmental Engineering Division Instruments	49	1239	39
5.	Occupational Health for IV year Physiotherapy students	1	37	1
6.	Visit to Industrial Safety Health Welfare Centre	96	2418	116

4.11 Technical Advice

Technical advice and guidance are provided to industries and port users on various aspects relating to control of hazards, prevention of accidents and occupational diseases, work environment, productivity etc.

4.12 Testing of Personal Protective Equipment

The respiratory and non-respiratory Personal protective equipment testing laboratories at the Central Labour Institute, Mumbai undertake performance tests of canisters, masks, helmets, safety shoes, safety goggles, safety belts, welding glasses etc. The details of Personal protective equipments tested during the year 2016 are given in Table 4.11

Table 4.11 Personnel Protective Equipments tested in 2016

Sl. No.	Type of Equipment	No. of Equipments tested
1.	Non-Respiratory Equipment	325
2.	Respiratory Equipment	191
Total		516

4.13 Approval of Flameproof Electrical Enclosures

Use of flame/explosion - proof electrical enclosures is mandatory in hazardous units where flammable environment exists. The control on quality of such flame proof electrical enclosures is assured through test methods as stipulated in IS: 60079-1:2009. DGFASLI is the approving agency for these enclosures for the purposes of the Factories Act, 1948. The approvals are issued on the basis of inspection of units manufacturing these equipments and the test reports obtained by them from recognized testing laboratories such as Central Power Research Institute and Central Institute

of Mining and Fuel Research. The details of approvals of flameproof Electrical Enclosures issued during the year 2016 are given in Table 4.12

Table 4.12-Approval of Flameproof Electrical Enclosures during the year 2016

Approval/ Inspection	No. of Manufactures / flame-proof electrical enclosures
Approvals issued	1 manufacturer for 1 product
Inspection visits	-

4.14 Talks

The officers of the organization deliver talks on special topics in programmes organized by outside agencies to disseminate latest technical information with specific reference to national studies, unit level studies, surveys conducted. Institution-wise details of talks delivered during the year 2016 are given in Table 4.13

Table 4.13: Institute -wise Talks delivered during 2016

Sl. No.	Institute	No. of Talks	Participants	Organizations
1.	DGFASLI (HQ)*	5	118	5
2.	Central Labour Institute, Mumbai	8	371	24
3.	Regional Labour Institute, Kolkata	2	45	2
4.	Regional Labour Institute, Chennai	5	144	5
5.	Regional Labour Institute, Kanpur	3	101	3
Total		23	779	39

* Comprising of Factory Advice Service & Dock Safety Divisions.

4.14 CIS National Centre for India

As a CIS National Centre for India CLI provides information and services on:

- Microfiche reference
- Awareness on current events in the areas of OSH
- Information access through CD-ROMs of ILO, WHO, etc.
- MSDS
- Dispersion Models

4.15 DGFASLI website

The DGFASLI website www.dgfasli.nic.in is a source of information on various safety and health related matters. The website contains database on abstract of OS&H studies, reports; information on advisory services rendered by DGFASLI in the area of testing of respiratory and non-respiratory personal protective equipment, flameproof equipment approval, material safety data sheets and National Referral Diagnostic Centre, etc. The training programme calendar for all the labour institutes, announcement on National Safety Awards & Vishwakarma Rashtriya Puraskar awards, AFIH course, Diploma Course in Industrial Safety along with the application forms are available on the website. The website enables users to access other useful websites related to safety and health and get the national directory of organization-profile of agencies engaged in the field of safety and health. The website also contains the text of the Factories Act, 1948 and the Model Rules framed there under and also the Dock Workers (Safety, Health and Welfare) Act, 1986 etc. Statistics of Factories, Docks, list of Chief Inspectors of Factories, list of Dock Safety Inspectorates are also available in the portal.

The digitization of clearances issued by various Ministry/Department, as a part of Digital India Program, DGFASLI has digitization of clearances in the following three areas:

- i. Approval of site notification of Major Accident Hazard (MAH) installations in the port premises under Rule 7 of MSIHC Rules 1989 (Environment Protection Act).
- ii. Issue of competency certificate under Rule 2(d) of Dock Workers (Safety, Health & Welfare) Regulation 1990.
- iii. Approval for manufacture of flame proof equipment under Section 37(a) of the Factories Act, 1948.

5

Safety Awards

To appreciate the contribution made by the factories and docks towards producing quality goods and providing efficient services in safe and healthy conditions the following awards are being given.

5.1 Prime Minister's Shram Awards (PMSA)

The Prime Minister's Shram Awards (PMSA) were instituted in 1985, for the workers (as defined in Industrial Disputes Act, 1947) in recognition of their outstanding contributions in organizations both in public and private sector and who have distinguished record of performance, devotion to duty of a high order, specific contribution in the field of productivity, proven innovative abilities, presence of mind and exceptional courage and also to the workmen who have made supreme sacrifice of laying down their lives in the conscientious discharge of their duties.

It has been decided from the year 2004 onwards that the private sectors shall also be included within the ambit of Prime Minister's Shram Awards and the workers in the private sector units employing 500 or more workers and engaged in manufacturing and productive processes will be eligible to apply for these awards. The number of awards has been increased from 17 to 33. The awards, in order of sequence are Shram Ratna, Shram Bhushan, Shram Vir/Veerangana and Shram Shri/Devi. The recognition consists of a Sanad and cash award of Rs. 2,00,000/- (1 award), Rs. 1,00,000/- (4 awards), Rs. 60,000/- (12 awards) and Rs. 40,000/- (16 awards) respectively.

5.2 Vishwakarma Rashtriya Puraskar & National Safety Awards

The DGFASLI on behalf of the Ministry of Labour and Employment has been implementing the Vishwakarma Rashtriya Puraskar (VRP) (earlier known as Shram Vir National Awards) and the National Safety Awards scheme since 1965. These schemes were modified in 1971, 1978 and again in 2007. The schemes presently in operation are as follow:

- (i) **Vishwakarma Rashtriya Puraskar:** It is designed to give recognition at the national level to outstanding suggestions resulting in (i) Higher Productivity (ii) Improvement in safety and working conditions (iii) Savings in foreign exchange (import substitution as well as quality and safety of products) (iv) Improvement in overall efficiency of the establishments. The prizes are grouped in three classes i.e. (a) Applications ranked 1 to 5 (5 Awards) – Class "A" Awards Rs.75,000/- Each (b) Applications ranked 6 to 13 (8 Awards) – Class "B" Awards Rs.50,000/- Each (c) Applications ranked 14 to 28 (15 Awards) – Class "C" Awards RS.25,000/- Each. These awards are applicable to the workers of Industrial establishments covered under the Factories Act, 1948, the employees covered under the Dock Worker (Safety, Health and Welfare) Act 1986, the Building and Other Construction Workers (Regulation of Employment and Conditions of Service) Act, 1996 and Installations under Atomic Energy Regulatory Board (AERB).

- (ii) **National Safety Awards:** National Safety Awards are given in recognition of outstanding safety performance on the part of the industrial establishments covered under the Factories Act 1948, the employers covered under the Dock Worker (Safety, Health and Welfare) Act 1986, the Building and Other Construction Workers (Regulation of Employment and Conditions of Service) Act, 1996 and Installations under Atomic Energy Regulatory Board (AERB). Shields and Citation Certificates are awarded to Winners and Runners Up. Schemes I to X are meant for factories, construction sites and nuclear Installations and Schemes XI and XII are for Ports. The Schemes/Schedule based on lowest frequency rate of accidents were deliberated in comparison with latest national Average Frequency Data of Accidents for the period from 2005 to 2007 for manufacturing sector and for the period from 2007 – 08 to 2009 – 10 for the Port Sector.

5.3 Achievement in 2016

The award presentation function for Vishwakarma Rashtriya Puraskar (VRP) & National Safety Awards (NSA) for the performance year 2014 was held at Sirifort Auditorium, New Delhi on 16th September 2016. The awards were presented by the Hon'ble Minister of State (Independent Charge) for Labour & Employment Shri Bandaru Dattatreya to 117 awardees of VRP and 93 NSA awardees. The awards presentation function was chaired by the Secretary, Labour & Employment. The awards function was attended by about 1000 delegates, Safety professionals and Govt. officials. The event got wide publicity in media and leading news papers.



Table 5.1- Applications received for Vishwakarma Rashtriya Puraskar and the number of awards given

Performance Year	Applications Received	Awards given
2010	162	28
2011	194	28
2012	142	28
2013	193	28
2014	199	28

Table 5.2- Estimated annual savings resulting from the suggestions

Performance Year	Savings in Indian Currency		Savings in Foreign Exchange	
	Recurring	Non-Recurring	Recurring	Non-Recurring
2010	1,45,97,88,000	77,14,00,000	1,19,76,304	49,60,155
2011	23,46,20,990	8,65,18,362	5,89,584	16,370
2012	8,37,70,16,690	5,61,15,000	2,22,69,000	-
2013	6,43,77,70,600	35,48,73,900	68,80,96,665	2,66,01,55,248
2014	57,71,27,000	2,29,14,000	2,27,85,894	2,92,00,830

Table 5.3- National Safety Awards under different schemes

Performance Year	National Safety Awards	SCHEMES											
		I	II	III	IV	V	VI	VII	VIII	IX	X	XI	XII
2010	Applications	55	32	16	19	09	11	10	11	02	02	01	02
	Awards	22	19	08	09	06	07	05	05	02	02	-	01
2011	Applications	44	27	18	16	13	11	13	16	04	03	-	-
	Awards	22	17	11	12	08	10	06	08	02	02	-	-
2012	Applications	30	31	10	12	09	12	08	09	02	02	-	-
	Awards	20	19	10	10	05	07	06	08	02	02	-	-
2013	Applications	48	39	12	19	18	21	13	13	08	08	-	-
	Awards	23	20	10	12	06	06	08	09	02	02	-	-
2014	Applications	42	34	18	20	14	17	09	14	01	01	-	-
	Awards	27	17	13	13	08	06	08	09	01	01	-	-

6

Human Resource Development

The officers of the Organization are deputed to the programmes organized by various agencies within the country and abroad, for their exposure to the latest technical developments that are taking place in the field of Industrial Safety and Health. The details of such participation during the year 2016 are given below:

Table 6.1- International Programme/visit by officers of DGFASLI during 2016

Sl. No.	Programme Title	Place	From	To	No. of officers
1.	Conducted Training Programme On Occupational Safety and Health	Kathmandu, Nepal	14/07/2016	16/07/2016	3
2.	Visited Germany as Indian Occupational Safety and Health delegation	Germany	25/07/2016	29/07/2016	1

Table 6.2- National Programmes attended by officers of DGFASLI during 2016

Sl. No.	Programme Title	Venue	From	To	No. of officers
1.	Seminar on silicosis for endemic states organized by NHRC	Vigyan Bhavan, New Delhi	22/07/2016	22/07/2016	1
2.	Management Development programme on public procurement	NIFM, FBD	21/11/2016	26/11/2016	-

Celebration of Hindi Pakhwara

“Hindi Pakhwara” was celebrated in this Directorate General and across RLIs and CLIs from 14th - 28th September, 2016. During this period a number of competitions like Essay, Typing, Noting & Drafting, Debating, Translation in Hindi etc. were held amongst the employees and prizes were distributed to the winners.

Visit to Germany

Indian delegation consisting of Dr. Avneesh Singh (Director General, DGFASLI, Ministry of Labour & Employment) and Mr. Devender Singh (Economic Advisor, Ministry of Labour & Employment) visited different laboratories and institutions under DGUV, Germany from 25th July to 29th July' 2016.



BG Bau Training Centre, Haan, Germany



Institute for Occupational Safety and Health of the German Social Accident Insurance, Bonn, Germany

Training of Trainers (TOT) Program in Nepal



7

Statistics on Occupational Safety and Health in Factories

The statistics of factories is collected and compiled by the **Labour Bureau** on the basis of the Annual Returns/Reports in respect of the Factories Act 1948, furnished by various States and Union Territories. Under the Factories Act, 1948, injuries resulting from industrial accidents, by reasons of which the person injured is prevented from attending to work for a period of 48 hours or more immediately following the accident, are recorded. The important indices on injuries are **Frequency Rate (FR)** and **Incidence Rate (IR)**. The **Frequency Rate** is defined as number of total injuries per 1,00,000 man-days worked. The **Incidence Rate** is the number of injuries per 1,000 workers employed in the factories.

The latest information relating to occupational injuries in factories are given in this chapter in tables 7.1 to 7.7, which are based on the statistics provided by Labour Bureau up to the year 2013.

Table: 7.1-Statistics of Employment, Industrial Injuries, etc. in Factories for the Year 2009-2013

Year	No. of Working Factories	Estimated Average daily Employment (in thousands)	Industrial Injuries		Frequency Rate of injuries per lakh Man-days worked		Incidence Rate of injuries per thousand Workers Employed in Factories Submitting Return	
			Fatal	Total	Fatal	Total	Fatal	Total
(1)	(2)	(3)	(4)	(5)	(6)	(7)	(8)	(9)
2009	143389	6488	668	6651	0.09	0.85	0.10	1.03
2010	228259	10855	1064	11175	0.06	0.64	0.10	1.03
2011	240824	11578	1083	10441	0.07	0.72	0.09	0.90
2012	161161	7335	682	5769	0.09	0.75	0.09	0.79
2013	87493	3659	494	1951	0.08	0.3	0.14	0.53

Source: (i) Data received from Labour Bureau through correspondence.

(ii) Data for the year 2014 and beyond is yet to be updated by the Labour Bureau.

Note: Limitations of the data received from Labour Bureau Chandigarh: The Number of injuries has been given on the basis of notices of accidents whereas the rates have been worked out on the basis of Annual Return.

Table 7.2- State-Wise Total Number of Industrial Injuries in Factories

Sl. No.	State / Union Territory	2009	2010	2011	2012	2013
1.	Andaman & Nicobar	40(-)	NA	77(-)	40(-)	NA
2.	Andhra Pradesh	1200(139)	1707(191)	1075 (164)	1336 (153)	714 (152)
3.	Arunachal Pradesh	NA	NA	NA	NA	NA
4.	Assam	52(5)	52(6)	77 (8)	78 (8)	105 (4)
5.	Bihar	156(27)	215(-)	95 (4)	135 (9)	160 (4)
6.	Chandigarh	8(-)	2(-)	15 (8)	3 (1)	2(-)
7.	Chhattisgarh	NA	306(84)	320 (98)	158 (106)	156 (97)
8.	Daman & Diu	NA	NA	50 (12)	44 (13)	NA
9.	Delhi	NA	NA	NA	NA	NA
10.	Goa	144(10)	109(12)	103 (11)	103 (7)	55 (10)
11.	Gujarat	NA	2992(221)	3263 (249)	NA	NA
12.	Haryana	118(31)	65(18)	59 (32)	43 (15)	78 (41)
13.	Himachal Pradesh	NA	NA	242 (10)	NA	NA
14.	Jammu & Kashmir	NA	NA	NA	NA	NA
15.	Jharkhand	NA	98(33)	113 (19)	NA	130 (37)
16.	Karnataka	NA	NA	NA	NA	NA
17.	Kerala	NA	NA	5 (-)	NA	NA
18.	Lakshadweep	NA	NA	NA	NA	NA
19.	Madhya Pradesh	NA	NA	NA	NA	NA
20.	Maharashtra	3249(217)	2933(222)	2601 (183)	2608 (216)	NA
21.	Manipur	-	-	NA	NA	NA
22.	Meghalaya	28(-)	-	-	NA	15 (-)
23.	Mizoram	NA	NA	NA	NA	NA
24.	Nagaland	NA	-	-	-	NA
25.	Odisha	548(122)	580(102)	550 (60)	NA	NA
26.	Puducherry	NA	56(10)	56 (10)	38 (8)	28 (3)
27.	Punjab	283(35)	241(22)	217 (34)	NA	NA
28.	Rajasthan	755(56)	856(67)	746 (63)	733 (34)	761 (55)
29.	Sikkim	NA	NA	NA	NA	NA
30.	Tamil Nadu	NA	957(75)	774 (118)	443 (110)	NA
31.	Telangana	--	--	--	--	234 (89)
32.	Tripura	6(2)	6(1)	3 (-)	7(2)	7 (2)
33.	Uttar Pradesh	NA	NA	NA	NA	NA
34.	Uttarakhand	64(24)	NA	NA	NA	NA
35.	West Bengal	NA	-	-	NA	NA
Total		6651(668)	11175(1064)	1044(1083)	5769(682)	2445(494)

Note: (i) NA = Not Available (ii) - = Nil

(iii) Figures in brackets pertain to "Fatalities" and are included in the total.

(iv) For limitations of the data please refer note under table 7.1

(v) Data for the year 2014 and beyond is yet to be updated by the Labour Bureau.

Source: Data received from Labour Bureau through correspondence.

Table 7.3- State-wise Frequency Rates of Industrial Injuries in Factories

S. No.	State/ Union Territory	2009	2010	2011	2012	2013
1.	Andaman & Nicobar	3.45(-)	NA	5.93 (-)	2.89 (-)	NA
2.	Andhra Pradesh	0.80(0.09)	0.70(0.80)	0.55 (0.08)	0.72 (0.08)	0.76 (0.16)
3.	Arunachal Pradesh	NA	NA	NA	NA	NA
4.	Assam	1.83(0.18)	0.45(0.05)	0.63 (0.07)	0.74 (0.08)	0.98 (0.04)
5.	Bihar	6.15(1.06)	5.83(-)	3.06 (0.13)	4.89 (0.33)	3.39 (0.08)
6.	Chandigarh	0.34(-)	0.09(-)	0.58 (0.31)	0.13 (0.04)	0.09 (-)
7.	Chhattisgarh	NA	0.13(0.04)	3.21 (0.98)	0.5 (0.33)	0.49 (0.31)
8.	Daman & Diu	NA	NA	0.36 (0.09)	898.69 (265.52)	NA
9.	Delhi	NA	NA	NA	NA	NA
10.	Goa	0.67(0.05)	0.60(0.07)	0.57 (0.06)	0.51 (0.03)	0.27(0.05)
11.	Gujarat	NA	2.79(0.21)	2.97 (0.23)	NA	NA
12.	Haryana	0.20(0.05)	0.14(0.04)	0.13 (0.07)	0.06 (0.02)	0.02(0.01)
13.	Himachal Pradesh	NA	NA	0.65 (0.03)	NA	NA
14.	Jammu & Kashmir	NA	NA	NA	NA	NA
15.	Jharkhand	NA	0.09(0.03)	0.47 (0.08)	NA	1.05(0.3)
16.	Karnataka	NA	NA	NA	NA	NA
17.	Kerala	NA	-	0.01 (-)	NA	NA
18.	Lakshadweep	NA	NA	NA	NA	NA
19.	Madhya Pradesh	NA	NA	NA	NA	NA
20.	Maharashtra	1.11(0.07)	0.87(0.07)	0.72 (0.05)	0.72 (0.06)	NA
21.	Manipur	-(-)	-(-)	NA	NA	NA
22.	Meghalaya	5.96(-)	-(-)	-	NA	1.68(-)
23.	Mizoram	NA	NA	NA	NA	NA
24.	Nagaland	NA	-(-)	-	-	NA
25.	Odisha	1.00(0.22)	0.87(0.15)	0.84 (0.09)	NA	NA
26.	Puducherry	NA	0.50(0.09)	0.86 (0.15)	0.51 (0.11)	0.34 (0.04)
27.	Punjab	1.01(0.12)	0.87(0.08)	0.92 (0.14)	NA	NA
28.	Rajasthan	1.53(0.11)	1.48(0.12)	1.42	1.23 (0.06)	1.52 (0.11)
29.	Sikkim	NA	NA	NA	NA	NA
30.	Tamil Nadu	NA	0.23(0.02)	0.19 (0.03)	11.61 (2.88)	NA
31.	Telangana	--	--	--	--	0.3(0.12)
32.	Tripura	0.19(0.06)	0.20(0.03)	0.1 (-)	0.2 (0.06)	0.23 (0.07)
33.	Uttar Pradesh	NA	NA	NA	NA	NA
34.	Uttarakhand	0.22(0.08)	NA	NA	NA	NA
35.	West Bengal	NA	-(-)	-	NA	NA
Total		0.85(0.09)	0.64(0.06)	0.72(0.07)	0.75 (0.09)	0.37(0.08)

Note: (i) F.R. = Frequency Rate per lakh man-days worked (ii) NA = Not Available, (iii) (-) = Nil or Negligible
(iv) Figures in bracket pertain to "Fatalities" and are included in the total
(v) For limitations of the data please refer note under table 7.1
(vi) Data for the year 2014 and beyond is yet to be updated by the Labour Bureau.

Table 7.4- State-wise Incidence Rates of Industrial Injuries in Factories

S. No.	State/ Union Territory	2009	2010	2011	2012	2013
1.	Andaman & Nicobar	7.33(-)	NA	13.87 (-)	7.05 (-)	NA
2.	Andhra Pradesh	1.26(0.15)	1.67(0.19)	1.04 (0.16)	1.15 (0.13)	1.18(0.25)
3.	Arunachal Pradesh	NA	NA	NA	NA	NA
4.	Assam	0.38(0.04)	0.35(0.04)	0.49 (0.05)	0.45 (0.05)	0.53(0.02)
5.	Bihar	1.27(0.22)	1.55(-)	0.64 (0.03)	0.8 (0.05)	0.85(0.02)
6.	Chandigarh	0.72(-)	0.16(-)	1.28 (0.68)	0.24 (0.08)	0.16(-)
7.	Chhattisgarh	NA	1.16(0.32)	1.14 (0.35)	0.67 (0.45)	0.59(0.37)
8.	Daman & Diu	NA	NA	0.34 (0.08)	0.25 (0.07)	NA
9.	Delhi	NA	NA	NA	NA	NA
10.	Goa	2.23(0.15)	1.60(0.18)	1.55 (0.17)	1.46 (0.1)	0.77(0.14)
11.	Gujarat	NA	2.31(0.17)	2.35 (0.18)	NA	NA
12.	Haryana	0.16(0.04)	0.08(0.02)	0.07 (0.04)	0.05 (0.02)	0.09(0.05)
13.	Himachal Pradesh	NA	NA	0.89 (0.04)	NA	NA
14.	Jammu & Kashmir	NA	NA	NA	NA	NA
15.	Jharkhand	NA	0.25(0.08)	0.27 (0.05)	NA	0.51(0.14)
16.	Karnataka	NA	NA	NA	NA	NA
17.	Kerala	NA	NA	0.01 (-)	NA	NA
18.	Lakshadweep	NA	NA	NA	NA	NA
19.	Madhya Pradesh	NA	NA	NA	NA	NA
20.	Maharashtra	2.12(0.14)	1.74(0.13)	1.41 (0.1)	1.25 (0.1)	NA
21.	Manipur	-(-)	-	NA	NA	NA
22.	Meghalaya	4.64(-)	-	-	NA	1.44(-)
23.	Mizoram	NA	NA	NA	NA	NA
24.	Nagaland	NA	-	-	-	NA
25.	Odisha	2.51(0.56)	2.19(0.39)	1.97 (0.21)	NA	NA
26.	Puducherry	NA	0.72(0.13)	0.7 (0.13)	0.46 (0.1)	0.35(0.04)
27.	Punjab	0.48(0.06)	0.39(0.04)	0.34 (0.05)	NA	NA
28.	Rajasthan	1.25(0.09)	1.50(0.12)	1.22 (0.1)	1.06 (0.05)	1.53(0.11)
29.	Sikkim	NA	NA	NA	NA	NA
30.	Tamil Nadu	NA	0.64(0.05)	0.52 (0.08)	0.28 (0.07)	NA
31.	Telangana	--	--	--	--	0.4(0.15)
32.	Tripura	0.12(0.04)	0.10(0.02)	0.05 (-)	0.12 (0.03)	0.12(0.04)
33.	Uttar Pradesh	NA	-	NA	NA	NA
34.	Uttarakhand	0.39(0.15)	NA	NA	NA	NA
35.	West Bengal	NA	NA	-	-	NA
Total		1.03(0.10)	1.03(0.10)	0.9 (0.09)	0.79 (0.09)	0.67(0.14)

Note: (i) I.R. = Incidence Rate per 1000 workers employed. (ii) NA = Not Available, (iii) (-) = Nil
 (iv) Figures in bracket pertain to "Fatalities" and are included in the total,
 (v) For limitations of the data please refer note under table 7.1
 (vi) Data for the year 2014 and beyond is yet to be updated by the Labour Bureau.

Source: Data received from Labour Bureau through correspondence.

Table 7.5- Industrial Injuries and their Incidence Rate (IR) per Thousand Workers Employed by Important Industries

Sl. No.	Industry	NIC Code 2008	2009		2010		2011		2012		2013	
			Total Injuries	IR	Total Injuries	IR	Total Injuries	IR	Total Injuries	IR	Total Injuries	IR
(1)	(2)	(3)	(4)	(5)	(6)	(7)	(8)	(9)	(10)	(11)	(12)	(13)
1.	All Textiles	13,14	1326 (59)	1.52 (0.07)	2937 (83)	4.09 (0.12)	2921 (96)	3.82 (0.13)	1063 (44)	1.58 (1.52)	521 (66)	1.46 (0.19)
2.	Manufacture of Paper & paper products & printing, publishing & allied products	17,18	108 (21)	0.38 (0.07)	341 (28)	2.17 (0.18)	252 (49)	1.61 (0.31)	178 (22)	1.17 (0.14)	49 (14)	0.48 (0.14)
3.	Manufacture of Chemicals & Chemical products (Except Petroleum and coal products)	20	186 (35)	0.40 (0.08)	719 (140)	1.02 (0.20)	1605 (193)	2.1 (0.25)	562 (94)	1.37 (0.23)	197 (36)	1.37 (0.25)
4.	Manufacture of Non-metallic mineral products	23	291 (63)	0.52 (0.11)	534 (86)	0.66 (0.11)	331 (80)	0.38 (0.09)	154 (39)	0.26 (0.06)	287 (48)	0.57 (0.10)
5.	Basic metal and alloys Industries	24	1042 (189)	2.19 (0.40)	1367 (311)	1.31 (0.30)	930 (211)	0.85 (0.19)	503 (130)	1 (0.26)	274 (101)	0.62 (0.23)
6.	Manufacture of metal products & Parts (except machinery & transport equipment)	25	365 (19)	0.87 (0.05)	1152 (57)	1.60 (0.08)	767 (58)	0.98 (0.07)	300 (52)	0.56 (0.1)	57 (16)	0.25 (0.07)
7.	Manufacture of machinery, machine tools & parts tools (except electrical machinery)	28	317 (17)	0.80 (0.04)	622 (31)	1.18 (0.06)	534 (50)	0.98 (0.09)	293 (8)	0.87 (0.02)	13 (4)	0.08 (0.02)

Contd. ...

Sl. No.	Industry	NIC Code 2008	2009		2010		2011		2012		2013	
			Total Injuries	IR	Total Injuries	IR	Total Injuries	IR	Total Injuries	IR	Total Injuries	IR
(1)	(2)	(3)	(4)	(5)	(6)	(7)	(8)	(9)	(10)	(11)	(12)	(13)
8.	Manufacture of transport equipment and parts	30	422 (20)	0.91 (0.04)	456 (18)	1.78 (0.07)	400 (42)	1.37 (0.14)	236 (17)	1.39 (0.1)	84 (4)	1.13 (0.05)
9.	Electricity, Gas and Steam	35	167 (29)	1.30 (0.23)	220 (32)	0.98 (0.14)	250 (61)	0.99 (0.24)	311 (54)	1.88 (0.33)	112(47)	1.09 (0.46)
Total of (Sl. No. 1 to 9 Industries)			4224 (452)	1.04 (0.11)	8348 (786)	3.08 (0.29)	7990 (840)	2.81 (0.3)	3600 (460)	1.61 (0.21)	1594 (336)	0.75 (0.16)
* Total of All Industries			6651 (668)	1.03 (0.10)	11175 (1064)	1.03 (0.10)	10441(1 083)	0.9 (0.09)	5769 (682)	0.79 (0.09)	2445 (494)	0.67 (0.14)

- Note:** (i) Figures in brackets indicate "Fatalities" and are included in the Total
(ii)* The figures for All Industries include the figures of other industries apart from above Industries shown.
(iii) For limitations of data refer footnote of table 7.1
(iv) Data for the year 2014 and beyond is yet to be updated by the Labour Bureau.

Source: Data received from Labour Bureau through correspondence.

Table 7.6- Frequency Rate of Total Injuries by Important Industries

Sl. No.	Industry	NIC Code 2008	2009	2010	2011	2012	2013
1.	All Textiles	13,14	1.63	1.33	1.26	1.26	1.13
2.	Manufacture of Paper & paper products & printing, publishing & allied products	17,18	0.33	0.69	0.54	0.74	0.40
3.	Manufacture of Chemicals & Chemical products (Except products of Petroleum and coal)	20	0.22	0.69	1.42	1.25	0.95
4.	Manufacture of Non-metallic mineral products	23	0.68	0.8	0.5	0.34	0.85
5.	Basic metal and alloys Industries	24	1.26	0.62	0.72	0.69	0.53
6.	Manufacture of metal products & Parts(except machinery & transport equipment)	25	0.87	1.1	0.69	0.51	0.26
7.	Manufacture of machinery, machine tools & parts (except electrical machinery)	28	0.62	0.96	0.73	0.59	0.07
8.	Manufacture of transport equipment and parts	30	0.53	0.98	0.83	0.96	0.90
9.	Electricity, Gas and Steam	35	0.70	0.08	0.68	1.45	0.64
Total of (Sl. No. 1 to 9 Industries)			0.81	0.72	0.93	0.84	0.68
* Total of All Industries			0.85	0.64	0.72	0.75	0.37

Note:

(i) * The figures for All Industries include the figures of other industries apart from above industries shown.

(ii) For limitations of data refer footnote of table 7.1

(iii) Data for the year 2014 and beyond is yet to be updated by the Labour Bureau.

Source: Data received from Labour Bureau through correspondence.

Table 7.7- Industrial injuries in Factories by causes

Sl. No.	Causation	2010		2011		2012		2013	
		Total	Fatal	Total	Fatal	Total	Fatal	Total	Fatal
1.	Prime movers	62	11	38	14	70	7	21	9
2.	Machinery moved by Mechanical Power	2565	165	1757	136	1207	102	456	55
3.	Machinery not moved by Mechanical Power	236	32	237	38	310	13	68	11
4.	Transport whether moved by Power or not	244	31	169	41	67	18	63	22
5.	Electricity	243	92	212	85	138	61	50	30
6.	Explosions	180	62	86	41	137	31	76	64
7.	Fires	208	46	320	131	186	94	76	15
8.	Gassing	194	22	104	27	88	5	19	11
9.	Molten Metals & other Hot or Corrosive Substances	407	70	417	66	168	37	42	9
10.	Hand Tools	389	5	862	11	179	1	90	2
11.	Falling Bodies	630	59	966	72	276	38	140	32
12.	Persons Falling	1147	153	2157	221	797	153	345	91
13.	Stepping on or Striking against Objects	587	18	999	35	398	17	156	16
14.	Handling Goods or Articles	604	43	813	42	436	10	244	9
15.	Others	2736	102	2754	116	1269	80	506	77
Total		10432	911	11891	1076	5726	667	2352	453

Note: (i) For limitations of data refer footnote of table 7.1

(ii) Total in table 7.7 may not tally with the corresponding tables 7.1, 7.2 and 7.4 due to non-availability of cause-wise data of industrial injuries.

(iii) Data for the year 2014 and beyond is yet to be updated by the Labour Bureau.

Source: Data received from Labour Bureau through correspondence.

8

Statistics on Status of compliance with statutory provisions of the Factories Act, 1948

DGFASLI receives information relating to factories covered under the provisions of the Factories Act, 1948 from States and Union Territories from time to time. This information is mainly collected through Factory Advice Service(FAS) Forms as well as through correspondence as and when required from the CIFs of the States/UTs. It is entered in the data bank specially created at DGFASLI for disseminating any specific information as and when necessary. This information can be used to know the state-wise status of safety and health as well as compliance level with statutory standards in factories. The information can be used for estimation of various trends. It is emphasized here that for ascertaining the correctness or the updated information given in the following pages/tables, the State Governments/Union Territory Administration concerned may be contacted.

Statistics of Factories at a Glance: 2015

No. of Registered Factories		348429
No. of Working Factories		297765
Employment	Total	16374546
	Men	14043981
	Women	2330565
No. of Safety Officers		3817
No. of Welfare Officers		3725
No. of Factory Med. Officers		11450
No. of Factories having Safety Policy		27332
No. of Factories having Safety Committees		18334
No. of MAH Factories		1908
Factories having On-site Emergency Plan		1896
Factories having Canteens Facility		8178
Factories having Crèche Facility		6871
Total Injuries		20961
Fatal Injuries		1145

Source: Data collected by DGFASLI through correspondence with CIF of States/UTs.

Table 8.1-Fatal and Non-fatal injuries in Factories (P)

Sl. No.	State/ Union Territory	2013		2014		2015	
		Fatal Injuries	Non Fatal Injuries	Fatal Injuries	Non Fatal Injuries	Fatal Injuries	Non Fatal Injuries
1.	Andaman & Nicobar Islands	5	15	0	46
2.	Andhra Pradesh	137	513	85	174	68	78
3.	Assam	8	57	13	58	8	40
4.	Bihar	4	156	12	251	10	188
5.	Chandigarh	0	2	0	0	0	0
6.	Chhattisgarh	92	380	101	71	74	54
7.	Daman & Diu and Dadra & Nagar Haveli	12	57	21	47	12	58
8.	Delhi	13	14	1	9	6	20
9.	Goa	10	45	5	80	8	71
10.	Gujarat	218	2285	240	1751	248	1534
11.	Haryana	40	21	41	64	40	61
12.	Himachal Pradesh	11	23	13	23	3	23
13.	Jammu & Kashmir	3	18	0	14
14.	Jharkhand	35	92	21	78	29	115
15.	Karnataka	68	43	51	30
16.	Kerala	27	68	24	234	20	326
17.	Madhya Pradesh	48	465	59	334	44	438
18.	Maharashtra	199	2013	187	1687	145	1471
19.	Manipur	0	0	0	0
20.	Meghalaya	3	3	1	1	1	1
21.	Mizoram	0	0	0	0	0	0
22.	Nagaland	0	0	0	0	1	0
23.	Odisha	58	104	46	165	55	167
24.	Puduchery	3	25	6	12	3	25
25.	Punjab	29	103	12	97	21	100
26.	Rajasthan	55	706	39	624	33	571
27.	Tamil Nadu	109	415	105	291	87	327
28.	Telangana	#	#	54	39	76	37
29.	Tripura	2	4	2	6	4	3
30.	Uttar Pradesh	129	71	45	47	39	57
31.	Uttarakhand	11	48	7	47	21	21
32.	West Bengal	96	19250	63	19180	38	13940
Total		1417	26963	1211	25403	1145	19816

Note: (i) There are no registered factories in Arunachal Pradesh, Lakshadweep and Sikkim.

(ii) P : Provisional

(iii) .. : Not Available

Source: Data collected by DGFASLI through correspondence with Chief Inspector of Factories of States/ UTs.

Table 8.2-State-wise Status of Employment in Factories during 2015

Sl. No.	State/ Union Territory	Registered Factories	Working Factories	Total Employment	Female Workers
1.	Andaman & Nicobar Islands	49	46	55408	175
2.	Andhra Pradesh	26921	21130	786989	185604
3.	Assam	5799	4666	41505	5607
4.	Bihar	10467	10237	212411	37
5.	Chandigarh	834	402	5216	1294
6.	Chhattisgarh	4064	3900	323725	9382
7.	Daman & Diu and Dadra & Nagar Haveli	6222	4766	190640	62900
8.	Delhi	12620	8568	397375	25120
9.	Goa	762	751	83676	11248
10.	Gujarat	39188	30000	1583888	66270
11.	Haryana	2390	2602	52726	3776
12.	Himachal Pradesh	4913	4913	321382	12300
13.	Jammu & Kashmir	1658	1261	66695	1997
14.	Jharkhand	6615	5530	265163	12337
15.	Karnataka	15650	14862	1564537	471029
16.	Kerala	22602	22065	602296	314269
17.	Madhya Pradesh	8539	8153	355579	24624
18.	Maharashtra	39176	37736	2424044	296626
19.	Manipur	1108	1108	13939	6371
20.	Meghalaya	161	158	9692	582
21.	Mizoram	2	2	86	6
22.	Nagaland	1319	281	5673	540
23.	Odisha	3895	1891	335202	6317
24.	Puducherry	2772	1996	85263	6372
25.	Punjab	19094	18764	652595	3450
26.	Rajasthan	10433	10433	469249	987
27.	Tamil Nadu	44017	28799	1985686	619169
28.	Telangana	18451	14790	709937	73279
29.	Tripura	1581	1483	59130	2875
30.	Uttar Pradesh	16117	15762	1196776	57005
31.	Uttarakhand	3400	3100	392689	29840
32.	West Bengal	17610	17610	1125374	19177
Total		348429	297765	16374546	2330565

Note: (i) There are no registered factories in Arunachal Pradesh, Lakshadweep and Sikkim.

(ii) P : Provisional (iii) .. : Not Available

Source: Data collected by DGFASLI through correspondence with Chief Inspector of Factories of States/ UTs.

Table 8.3- State-wise Hazardous Factories under Sec. 2(cb) as on 2015

Sl. No.	State/ Union Territory	No. of Hazardous Factories	No. of Workers
1.	Andaman & Nicobar Islands	2	186
2.	Andhra Pradesh	1224	79551
3.	Assam	24	7278
4.	Bihar	69	24433
5.	Chandigarh	0	0
6.	Chhattisgarh	734	231407
7.	Daman & Diu and Dadra & Nagar Haveli	18	600
8.	Delhi	386	17013
9.	Goa	130	32801
10.	Gujarat	10798	468010
11.	Haryana	182	6109
12.	Himachal Pradesh	362	111899
13.	Jammu & Kashmir	28	3387
14.	Jharkhand	721	124678
15.	Karnataka	1181	227319
16.	Kerala	1586	21947
17.	Madhya Pradesh	1320	92045
18.	Maharashtra	4565	364938
19.	Manipur	8	987
20.	Meghalaya	86	6570
21.	Mizoram	0	0
22.	Nagaland	2	73
23.	Odisha	580	183315
24.	Puducherry	202	10105
25.	Punjab	353	27324
26.	Rajasthan	646	98543
27.	Tamil Nadu	1078	118841
28.	Telangana	1927	148739
29.	Tripura	32	1769
30.	Uttar Pradesh	3411	352514
31.	Uttarakhand	737	114148
32.	West Bengal	4419	247030
Total		36811	3123559

Note: (i) There are no registered factories in Arunachal Pradesh, Lakshadweep and Sikkim.

(ii) P : Provisional (iii) .. : Not Available

Source: Data collected by DGFASLI through correspondence with Chief Inspector of Factories of States/ UTs.

Table 8.4- Inspectors of Factories for the year 2015

Sl. No.	State/ Union Territory	Sanctioned	In-position
1.	Andaman & Nicobar Islands	2	2
2.	Andhra Pradesh	53	37
3.	Assam	29	26
4.	Bihar	21	13
5.	Chandigarh	0	6
6.	Chhattisgarh	27	24
7.	Daman & Diu and Dadra & Nagar Haveli	1	1
8.	Delhi	16	10
9.	Goa	7	5
10.	Gujarat	126	85
11.	Haryana	36	32
12.	Himachal Pradesh	2	49
13.	Jammu & Kashmir	5	5
14.	Jharkhand	25	21
15.	Karnataka	54	37
16.	Kerala	56	53
17.	Madhya Pradesh	41	26
18.	Maharashtra	131	74
19.	Manipur	2	2
20.	Meghalaya	3	3
21.	Mizoram	1	1
22.	Nagaland	3	3
23.	Odisha	34	29
24.	Puducherry	9	4
25.	Punjab	28	19
26.	Rajasthan	39	20
27.	Tamil Nadu	168	95
28.	Telangana	30	29
29.	Tripura	5	5
30.	Uttar Pradesh	47	12
31.	Uttarakhand	2	2
32.	West Bengal	72	38
Total		1075	768

Note: (i) There are no registered factories in Arunachal Pradesh, Lakshadweep and Sikkim.

(ii) P : Provisional (iii) .. : Not Available

Source: Data collected by DGFASLI through correspondence with Chief Inspector of Factories of States/ UTs.

Table 8.5-State-wise Specialist Inspectors of Factories for the year 2015

Sl. No.	State/ Union Territory	Medical Inspectors		Chemical Inspector		Hygiene Inspector		Others	
		Sanctioned	In-Position	Sanctioned	In-Position	Sanctioned	In-Position	Sanctioned	In-position
1.	Andaman & Nicobar Islands	0	0	0	0	0	0	0	0
2.	Andhra Pradesh	0	0	1	1	0	0	0	0
3.	Assam	1	0	0	0	0	0	0	0
4.	Bihar	2	1	2	1	0	0	0	0
5.	Chandigarh	0	0	0	0	0	0	0	0
6.	Chhattisgarh	2	2	0	0	0	0	0	0
7.	Daman & Diu and Dadra & Nagar Haveli	0	0	0	0	0	0	0	0
8.	Delhi	1	1	1	0	0	0	0	0
9.	Goa	1	1	0	0	0	0	0	0
10.	Gujarat	5	2	4	1	4	0	2	0
11.	Haryana	5	5	5	5	0	0	3	2
12.	Himachal Pradesh	0	0	1	0	0	0	0	0
13.	Jammu & Kashmir	0	0	0	0	0	0	0	0
14.	Jharkhand	0	0	0	0	0	0	0	0
15.	Karnataka	1	1	0	0	0	0	1	1
16.	Kerala	4	0	5	5	1	1	3	2
17.	Madhya Pradesh	1	1	0	0	0	0	0	0
18.	Maharashtra	2	0	0	0	0	0	0	0
19.	Manipur	0	0	0	0	0	0	0	0
20.	Meghalaya	0	0	0	0	0	0	0	0
21.	Mizoram	0	0	0	0	0	0	0	0
22.	Nagaland	0	0	0	0	0	0	0	0
23.	Odisha	1	1	0	0	0	0	0	0
24.	Puducherry	1	1	1	1	0	0	1	1
25.	Punjab	3	2	0	0	0	0	0	0
26.	Rajasthan	1	1	3	1	0	0	1	0
27.	Tamil Nadu	0	0	0	0	0	0	0	0
28.	Telangana	1	0	0	0	0	0	0	0
29.	Tripura	0	0	0	0	0	0	0	0
30.	Uttar Pradesh	0	0	0	0	0	0	0	0
31.	Uttarakhand	0	0	0	0	0	0	0	0
32.	West Bengal	9	2	12	8	0	0	0	0
Total		41	21	35	23	5	1	11	6

Note: (i) There are no registered factories in Arunachal Pradesh, Lakshadweep and Sikkim.

(ii) P : Provisional (iii) .. : Not Available

Source: Data collected by DGFASLI through correspondence with Chief Inspector of Factories of States / UTs.

Table 8.6- State-wise Certifying Surgeons of Factories for the year 2015

Sl. No.	State/ Union Territory	Employed		Notified	
		Sanctioned	In position	Sanctioned	In position
1.	Andaman & Nicobar Islands	0	0	4	4
2.	Andhra Pradesh	2	0	0	0
3.	Assam	3	0	0	0
4.	Bihar	0	0	0	0
5.	Chandigarh	0	0	0	0
6.	Chhattisgarh	0	0	0	0
7.	Daman & Diu and Dadra & Nagar Haveli	0	0	0	1
8.	Delhi	1	1	*	*
9.	Goa	0	0	0	0
10.	Gujarat	21	8	0	0
11.	Haryana	0	0	0	0
12.	Himachal Pradesh	0	0	0	12
13.	Jammu & Kashmir	0	0	0	0
14.	Jharkhand	0	0	0	0
15.	Karnataka	0	0	0	0
16.	Kerala	0	0	0	0
17.	Madhya Pradesh	0	0	0	0
18.	Maharashtra	1	1	0	0
19.	Manipur	0	0	0	0
20.	Meghalaya	0	0	0	0
21.	Mizoram	0	0	0	0
22.	Nagaland	0	0	0	0
23.	Odisha	0	0	21	21
24.	Puducherry	1	1	0	0
25.	Punjab	0	0	0	0
26.	Rajasthan	0	0	0	0
27.	Tamil Nadu	9	8	9	8
28.	Telangana	0	0	0	0
29.	Tripura	0	0	20	20
30.	Uttar Pradesh	0	0	0	0
31.	Uttarakhand	0	0	0	0
32.	West Bengal	9	2	0	0
Total		47	21	54	66

Note: (i) There are no registered factories in Arunachal Pradesh, Lakshadweep and Sikkim.

(ii) P : Provisional (iii) .. : Not Available

Source: Data collected by DGFASLI through correspondence with Chief Inspector of Factories of States/ UTs.

Table 8.7- No. of Factories Inspected during the year 2015

Sl. No.	State/ Union Territory	All Factories	Hazardous Factories
1.	Andaman & Nicobar Islands	31	2
2.	Andhra Pradesh	4708	427
3.	Assam	2103	24
4.	Bihar	1289	69
5.	Chandigarh	1	0
6.	Chhattisgarh	1385	427
7.	Daman & Diu and Dadra & Nagar Haveli	140	10
8.	Delhi	1036	145
9.	Goa	66	31
10.	Gujarat	14056	3491
11.	Haryana	347	53
12.	Himachal Pradesh	1165	362
13.	Jammu & Kashmir	1166	19
14.	Jharkhand	2544	503
15.	Karnataka	8395	1149
16.	Kerala	12615	980
17.	Madhya Pradesh	2249	1320
18.	Maharashtra	11333	3096
19.	Manipur	185	8
20.	Meghalaya	19	7
21.	Mizoram	0	0
22.	Nagaland	263	2
23.	Odisha	3189	580
24.	Puducherry	1082	136
25.	Punjab	2141	287
26.	Rajasthan	2819	0
27.	Tamil Nadu	29781	2150
28.	Telangana	2529	1232
29.	Tripura	907	32
30.	Uttar Pradesh	1421	157
31.	Uttarakhand	141	39
32.	West Bengal	2044	461
Total		111150	17199

Note: (i) There are no registered factories in Arunachal Pradesh, Lakshadweep and Sikkim.

(ii) P : Provisional

(iii) .. : Not Received

(iv) NA: Not Available

Source: Data collected by DGFASLI through correspondence with Chief Inspector of Factories of States/ UTs.

Table 8.8- Prosecution and Convictions under Section 92 & Section 96A for the year 2015

Sl. NO.	State/ Union Territory	Pending from Previous year	Launched during the year	Decided during the year	Convictions	Imprisonment (Person)	Total fine Imposed (Rs.)
1.	Andaman & Nicobar Islands	0	0	0	0	0	0
2.	Andhra Pradesh	2145	456	615	591	0	5171000
3.	Assam	58	9	0	0	0	0
4.	Bihar	148	15	0	0	0	0
5.	Chandigarh	0	0	0	0	0	0
6.	Chhattisgarh	1632	499	549	365	13	22041100
7.	Daman & Diu and Dadra & Nagar Haveli	0	0	0	0	0	0
8.	Delhi	124	63	27	27	0	322000
9.	Goa	24	5	9	8	0	170000
10.	Gujarat	30786	1733	1498	1199	0	10245900
11.	Haryana	9585	5963	5136	3728	0	14742100
12.	Himachal Pradesh	369	94	113	113	0	1401700
13.	Jammu & Kashmir	151	39	23	4	0	228000
14.	Jharkhand	389	47	0	0	0	0
15.	Karnataka	718	175	189	167	1	4062600
16.	Kerala	219	73	48	38	0	898000
17.	Madhya Pradesh	3213	169	147	0	0	3100800
18.	Maharashtra	1238	632	599	599	0	11662500
19.	Manipur	0	0	0	0	0	0
20.	Meghalaya	0	0	0	0	0	0
21.	Mizoram	0	0	0	0	0	0
22.	Nagaland	0	0	0	0	0	0
23.	Odisha	2150	157	18	18	0	3410000
24.	Puducherry	3	10	11	11	0	507000
25.	Punjab	1086	121	143	11	1	901500
26.	Rajasthan	933	22	31	31	0	182000
27.	Tamil Nadu	11049	4138	3450	3448	12	24613200
28.	Telangana	2634	1412	645	677	0	5682800
29.	Tripura	10	3	4	3	0	21000
30.	Uttar Pradesh	2041	82	52	51	0	1230000
31.	Uttarakhand	145	44	5	0	0	81000
32.	West Bengal	388	26	6	6	0	251000
Total		71238	15987	13318	11095	27	110925200

Note: (i) There are no registered factories in Arunachal Pradesh, Lakshadweep and Sikkim.

(ii) P : Provisional

(iii) .. : Not Available

Source: Data collected by DGFASLI through correspondence with Chief Inspector of Factories of States/ UTs.

Table 8.9- State-wise Status of Safety Officers (SO) under 40-B (1) in factories during 2015

Sl. No.	State/Union Territory	Factories Requiring SO	Factories which Appointed SO	SO Required	SO Appointed
1.	Andaman & Nicobar Islands	0	0	0	0
2.	Andhra Pradesh	66	58	87	72
3.	Assam	12	12	64	64
4.	Bihar	10	10	10	10
5.	Chandigarh	0	0	0	0
6.	Chhattisgarh	159	145	235	237
7.	Daman & Diu and Dadra & Nagar Haveli	25	28	36	36
8.	Delhi	9	5	9	5
9.	Goa	10	11	10	11
10.	Gujarat	743	718	968	993
11.	Haryana	133	137	150	149
12.	Himachal Pradesh	16	16	16	16
13.	Jammu & Kashmir	15	15	15	15
14.	Jharkhand	72	75	189	169
15.	Karnataka	249	232	280	266
16.	Kerala	39	39	42	42
17.	Madhya Pradesh	112	108	131	127
18.	Maharashtra	296	369	342	533
19.	Manipur	3	3	3	3
20.	Meghalaya	0	0	0	0
21.	Mizoram	0	0	0	0
22.	Nagaland	0	0	0	0
23.	Odisha	97	92	331	267
24.	Puducherry	9	8	9	8
25.	Punjab	51	43	51	43
26.	Rajasthan	83	79	89	87
27.	Tamil Nadu	284	266	292	279
28.	Telangana	19	19	18	18
29.	Tripura	0	5	0	5
30.	Uttar Pradesh	197	172	235	193
31.	Uttarakhand	52	42	52	42
32.	West Bengal	254	127	209	127
Total		3015	2834	3873	3817

Note: (i) There are no registered factories in Arunachal Pradesh, Lakshadweep and Sikkim.

(ii) P : Provisional (iii) .. : Not Available

Source: Data collected by DGFASLI through correspondence with Chief Inspector of Factories of States/ UTs.

Table 8.10- State-wise status of Declaration of Safety Policy for the year 2015

Sl. No.	State/ Union Territory	Factories Requiring	Factories Having
1.	Andaman & Nicobar Islands	0	0
2.	Andhra Pradesh	0	0
3.	Assam	8	0
4.	Bihar	5	5
5.	Chandigarh	0	0
6.	Chhattisgarh	654	514
7.	Daman & Diu and Dadra & Nagar Haveli	59	76
8.	Delhi	1133	1114
9.	Goa	303	196
10.	Gujarat	8152	7534
11.	Haryana	1866	1574
12.	Himachal Pradesh	83	83
13.	Jammu & Kashmir	51	37
14.	Jharkhand	347	324
15.	Karnataka	4646	3864
16.	Kerala	663	654
17.	Madhya Pradesh	1476	1428
18.	Maharashtra	2705	2519
19.	Manipur	8	8
20.	Meghalaya	161	161
21.	Mizoram	0	0
22.	Nagaland	0	0
23.	Odisha	1291	1070
24.	Puducherry	27	27
25.	Punjab	533	419
26.	Rajasthan	167	162
27.	Tamil Nadu	1033	962
28.	Telangana	142	98
29.	Tripura	0	0
30.	Uttar Pradesh	5256	3827
31.	Uttarakhand	655	635
32.	West Bengal	903	41
Total		32327	27332

Note: (i) There are no registered factories in Arunachal Pradesh, Lakshadweep and Sikkim.

(ii) P : Provisional (iii) .. : Not Available

Source: Data collected by DGFASLI through correspondence with Chief Inspector of Factories of States/ UTs.

Table 8.11- State-wise Constitution of Safety Committee for the year 2015

Sl. No.	State/ Union Territory	Factories Requiring Safety Committee	Factories Having Safety Committee
1.	Andaman & Nicobar Islands	0	0
2.	Andhra Pradesh	768	521
3.	Assam	47	0
4.	Bihar	5	5
5.	Chandigarh	0	0
6.	Chhattisgarh	471	402
7.	Daman & Diu and Dadra & Nagar Haveli	63	82
8.	Delhi	115	114
9.	Goa	180	174
10.	Gujarat	6202	5691
11.	Haryana	939	858
12.	Himachal Pradesh	83	83
13.	Jammu & Kashmir	9	9
14.	Jharkhand	189	168
15.	Karnataka	1181	1674
16.	Kerala	243	198
17.	Madhya Pradesh	692	681
18.	Maharashtra	1701	1447
19.	Manipur	8	8
20.	Meghalaya	75	20
21.	Mizoram	0	0
22.	Nagaland	0	0
23.	Odisha	484	387
24.	Puducherry	29	29
25.	Punjab	361	325
26.	Rajasthan	163	160
27.	Tamil Nadu	1561	1376
28.	Telangana	142	98
29.	Tripura	5	0
30.	Uttar Pradesh	4098	3148
31.	Uttarakhand	655	635
32.	West Bengal	903	41
Total		21372	18334

Note: (i) There are no registered factories in Arunachal Pradesh, Lakshadweep and Sikkim.

(ii) P : Provisional (iii) .. : Not Available

Source: Data collected by DGFASLI through correspondence with Chief Inspector of Factories of States/ UTs.

Table 8.12- State-wise On-site Emergency Plan (in respect of MAH Units) as on 2015

Sl. No.	State/ Union Territory	Factories Requiring On-site Emergency Plan	Factories Having On-site Emergency Plan
1.	Andaman & Nicobar Islands	3	3
2.	Andhra Pradesh	78	78
3.	Assam	24	24
4.	Bihar	19	11
5.	Chandigarh	0	0
6.	Chhattisgarh	28	28
7.	Daman & Diu and Dadra & Nagar Haveli	0	25
8.	Delhi	16	16
9.	Goa	14	14
10.	Gujarat	406	406
11.	Haryana	64	56
12.	Himachal Pradesh	8	8
13.	Jammu & Kashmir	14	14
14.	Jharkhand	18	18
15.	Karnataka	71	71
16.	Kerala	46	46
17.	Madhya Pradesh	74	74
18.	Maharashtra	340	338
19.	Manipur	8	8
20.	Meghalaya	0	0
21.	Mizoram	0	0
22.	Nagaland	0	0
23.	Odisha	32	32
24.	Puducherry	3	3
25.	Punjab	81	81
26.	Rajasthan	83	84
27.	Tamil Nadu	150	134
28.	Telangana	78	75
29.	Tripura	5	5
30.	Uttar Pradesh	113	112
31.	Uttarakhand	47	47
32.	West Bengal	85	85
Total		1908	1896

Note: (i) There are no registered factories in Arunachal Pradesh, Lakshadweep and Sikkim.

(ii) P : Provisional (iii) .. : Not Available

Source: Data collected by DGFASLI through correspondence with Chief Inspector of Factories of States/ UTs.

Table 8.13- State-wise Medical Facilities in factories for the year 2015

Sl. No.	State/Union Territory	Full time MO		Retainer ship or part-time MO		Factories having Ambulance Van		Factories having Ambulance Rooms	
		Req.	App.	Req.	App.	Req.	App.	Req.	App.
1.	Andaman & Nicobar Islands	1	0	0	0	2	2	2	2
2.	Andhra Pradesh	221	163	0	0	0	0	124	110
3.	Assam	55	55	219	0	55	55	55	99
4.	Bihar	9	9	9	9	9	9	9	9
5.	Chandigarh	0	0	0	0	0	0	0	0
6.	Chhattisgarh	141	126	313	186	145	126	115	120
7.	Daman & Diu and Dadra & Nagar Haveli	3	3	0	80	0	27	0	32
8.	Delhi	26	18	436	275	312	156	30	22
9.	Goa	35	30	72	52	70	50	31	20
10.	Gujarat	313	286	2369	2269	1390	953	376	379
11.	Haryana	85	78	112	119	129	126	127	125
12.	Himachal Pradesh	322	322	2335	2335	196	196	196	196
13.	Jammu & Kashmir	4	4	4	4	4	4	4	4
14.	Jharkhand	87	84	66	67	58	63	77	77
15.	Karnataka	415	349	170	168	435	370	421	409
16.	Kerala	36	32	44	44	22	22	44	40
17.	Madhya Pradesh	146	141	307	298	124	119	149	145
18.	Maharashtra	555	372	1514	839	529	452	486	490
19.	Manipur	1	6	0	0	2	1	2	2
20.	Meghalaya	11	4	138	27	16	2	1	1
21.	Mizoram	0	0	0	0	0	0	0	0
22.	Nagaland	0	0	0	0	0	0	0	0
23.	Odisha	158	84	76	75	208	157	111	99
24.	Puducherry	10	8	28	22	9	9	9	9
25.	Punjab	0	0	0	0	0	0	117	98
26.	Rajasthan	83	84	54	52	125	118	147	143
27.	Tamil Nadu	198	166	342	287	305	282	343	310
28.	Telangana	32	32	0	0	0	0	32	32
29.	Tripura	1	4	0	2	1	2	1	2
30.	Uttar Pradesh	712	290	2046	1328	641	311	449	204
31.	Uttarakhand	9	7	61	61	160	157	50	47
32.	West Bengal	292	79	15	15	303	54	303	77
Total		3961	2836	10730	8614	5250	3823	3811	3303

Note: (i) There are no registered factories in Arunachal Pradesh, Lakshadweep and Sikkim

(ii) P : Provisional (iii) .. : Not Available

(iv) Req. : Required (v) App. : Appointed

Source: Data collected by DGFASLI through correspondence with Chief Inspector of Factories of States/UTs.

Table 8.14- State-wise Canteens, Shelters, Rest Rooms and Crèches for the year 2015

Sl. No.	State/ Union Territory	Canteen		Shelter, Rest Room, Lunch Room		Crèches	
		Factories Requiring	Factories Having	Factories Requiring	Factories Having	Factories Requiring	Factories Having
1.	Andaman & Nicobar Islands	3	3	8	8	0	0
2.	Andhra Pradesh	288	268	366	341	323	262
3.	Assam	42	51	81	100	280	262
4.	Bihar	13	13	15	15	0	0
5.	Chandigarh	0	4	0	4	0	0
6.	Chhattisgarh	161	165	237	208	33	21
7.	Daman & Diu and Dadra & Nagar Haveli	80	92	135	160	103	103
8.	Delhi	82	82	288	288	35	35
9.	Goa	83	53	175	90	31	20
10.	Gujarat	972	918	1387	1453	314	300
11.	Haryana	515	470	870	745	130	107
12.	Himachal Pradesh	340	340	93	93	78	78
13.	Jammu & Kashmir	35	35	65	65	2	2
14.	Jharkhand	89	94	219	191	22	20
15.	Karnataka	863	840	1153	1149	1241	1099
16.	Kerala	508	469	1244	1222	795	787
17.	Madhya Pradesh	245	237	538	523	78	68
18.	Maharashtra	1216	1220	2366	2208	470	432
19.	Manipur	6	6	10	10	21	21
20.	Meghalaya	26	26	27	27	7	2
21.	Mizoram	0	0	0	0	0	0
22.	Nagaland	1	1	0	0	0	0
23.	Odisha	178	159	243	240	59	54
24.	Puducherry	32	27	53	40	5	4
25.	Punjab	251	232	321	304	58	54
26.	Rajasthan	349	345	552	549	45	45
27.	Tamil Nadu	1270	1182	2316	2202	2977	2775
28.	Telangana	49	46	85	80	35	26
29.	Tripura	16	10	16	8	2	1
30.	Uttar Pradesh	691	437	1547	997	186	185
31.	Uttarakhand	199	194	332	332	112	105
32.	West Bengal	173	159	679	243	34	3
Total		8776	8178	15421	13895	7476	6871

Note: (i) There are no registered factories in Arunachal Pradesh, Lakshadweep and Sikkim.

(ii) P : Provisional

(iii) .. : Not Available

Source: Data collected by DGFASLI through correspondence with Chief Inspector of Factories of States/ UTs.

Table 8.15- State-wise Welfare Officers for the year 2015

Sl. No.	State/ Union Territory	Factories Requiring	Factories Having	Officers Required	Officers Appointed
1.	Andaman & Nicobar Islands	2	1	2	1
2.	Andhra Pradesh	121	111	128	101
3.	Assam	46	41	46	41
4.	Bihar	23	23	23	23
5.	Chandigarh	3	3	3	3
6.	Chhattisgarh	126	117	118	122
7.	Daman & Diu and Dadra & Nagar Haveli	46	46	76	76
8.	Delhi	29	29	30	29
9.	Goa	18	15	18	15
10.	Gujarat	462	482	476	491
11.	Haryana	150	140	193	170
12.	Himachal Pradesh	85	85	85	85
13.	Jammu & Kashmir	6	6	6	6
14.	Jharkhand	69	71	107	105
15.	Karnataka	438	429	489	479
16.	Kerala	52	45	52	45
17.	Madhya Pradesh	151	142	165	162
18.	Maharashtra	477	472	546	531
19.	Manipur	1	1	1	1
20.	Meghalaya	1	1	1	1
21.	Mizoram	0	0	0	0
22.	Nagaland	0	0	0	0
23.	Odisha	97	99	130	125
24.	Puduchery	10	7	10	7
25.	Punjab	109	89	109	89
26.	Rajasthan	175	156	175	165
27.	Tamil Nadu	383	340	404	361
28.	Telangana	30	29	30	29
29.	Tripura	1	3	1	3
30.	Uttar Pradesh	277	232	298	249
31.	Uttarakhand	84	82	84	82
32.	West Bengal	272	128	272	128
Total		3744	3425	4078	3725

Note: (i) There are no registered factories in Arunachal Pradesh, Lakshadweep and Sikkim.

(ii) P : Provisional (iii) .. : Not Available

Source: Data collected by DGFASLI through correspondence with Chief Inspector of Factories of States/ UTs.

Table 8.16- Notification of Model Rules framed under the Factories (Amendment) Act, 1987

Sl. No.	State/ Union Territory	Model Rules
1.	Andaman & Nicobar Islands	No hazardous unit, hence Rules Not applicable
2.	Andhra Pradesh	Notified
3.	Assam	Notified
4.	Bihar	Notified
5.	Chandigarh	Notified in Punjab Factories Rules
6.	Chhattisgarh	Under Progress
7.	Daman & Diu and Dadra & Nagar Haveli	Under process
8.	National Capital Territory of Delhi	Notified
9.	Goa	Notified
10.	Gujarat	Notified
11.	Haryana	Notified
12.	Himachal Pradesh	Not Notified
13.	Jammu & Kashmir	Not Notified
14.	Jharkhand	Notified
15.	Karnataka	Notified
16.	Kerala	Notified
17.	Madhya Pradesh	Notified
18.	Maharashtra	Notified
19.	Manipur	Draft submitted for Govt. approval
20.	Meghalaya	Notified
21.	Mizoram	No hazardous unit, hence Rules Not applicable
22.	Nagaland	Draft submitted for Govt. approval
23.	Orissa	Notified
24.	Puducherry	Notified
25.	Punjab	Notified
26.	Rajasthan	Notified
27.	Tamil Nadu	Notified
28.	Telangana	..
29.	Tripura	Notified
30.	Uttar Pradesh	Notified
31.	Uttarakhand	Not Notified
32.	West Bengal	Notified

Note: (i) There are no registered factories in Arunachal Pradesh, Lakshadweep and Sikkim.

(ii) P : Provisional (iii) .. : Not Available

Source: Data collected by DGFASLI through correspondence with Chief Inspector of Factories of States/ UTs.

Table 8.17- Notification of Major Accidents Hazard Control Rules

Sl. No.	State/ Union Territory	MAHC Rules, 1997
1.	Andaman & Nicobar Islands	No hazardous unit, hence Rules Not applicable
2.	Andhra Pradesh	Notified
3.	Assam	Notified
4.	Bihar	Notified
5.	Chandigarh	Notified
6.	Chhattisgarh	..
7.	Daman & Diu and Dadra & Nagar Haveli	Notified
8.	National Capital Territory of Delhi	Notified
9.	Goa	Notified
10.	Gujarat	Notified
11.	Haryana	Notified
12.	Himachal Pradesh	Not Notified
13.	Jammu & Kashmir	Not Notified
14.	Jharkhand	Notified
15.	Karnataka	Notified
16.	Kerala	Notified
17.	Madhya Pradesh	Notified
18.	Maharashtra	Notified
19.	Manipur	Draft Rules submitted for approval of state Govt.
20.	Meghalaya	Notified
21.	Mizoram	No hazardous unit, hence Rules Not applicable
22.	Nagaland	Not Notified
23.	Orissa	Notified
24.	Puducherry	Draft notification under consideration of Govt.
25.	Punjab	Notified
26.	Rajasthan	Notified
27.	Tamil Nadu	Notified
28.	Telangana	..
29.	Tripura	Notified
30.	Uttar Pradesh	Notified
31.	Uttarakhand	Notified
32.	West Bengal	Draft sent for notification

Note: (i) There are no registered factories in Arunachal Pradesh, Lakshadweep and Sikkim.

(ii) P : Provisional (iii) .. : Not Available

Source: Data collected by DGFASLI through correspondence with Chief Inspector of Factories of States/ UTs.

9

Statistics on Occupational Safety & Health in Ports

DGFASLI is enforcing the Dock Workers (Safety, Health & Welfare) Act, 1986 and Regulations 1990 in all the major ports of the country. The Inspectorate of Dock Safety offices located in the major ports enforce the Act and Regulations. Under Regulations 91(1) & (6) it is obligatory on the part of the Employers of the Dock Workers to report the accidents/ dangerous occurrences to the Inspectorates.

Important Statistics on Occupational Safety & Health in the major Ports of the country for the year 2016 are given in the subsequent tables:

Table 9.1- Reportable Accidents & Dangerous Occurrences in major Ports during the Year 2016

Sl. No.	Port	Fatal	Total	Dangerous Occurrences
1.	Mumbai	01	19	01
2.	JNPT	00	00	00
3.	Kandla	04	08	03
4.	Mormugao	01	01	02
5.	Kolkata	02	07	00
6.	Paradip	00	01	00
7.	Visakhapatnam	00	00	00
8.	Chennai	01	03	00
9.	Kochi	00	01	00
10.	New Mangalore	00	02	00
11.	Tuticorin	02	05	00
Total		11	47	06

Table 9.2: Average Daily Employment & Rates of Reportable Accidents in major Ports during the year 2016

Sl. No.	Port	Average Daily Employment	*Frequency Rate		*Incidence Rate of injuries per Thousand	
			Fatal	Total	Fatal	Total
1.	Mumbai	665.09	0.433	9.1	0.70	14.7
2.	JNPT	3600	0.00	0.00	0.00	0.00
3.	Kandla	4106	0.34	0.67	0.97	1.95
4.	Mormugao	2738	0.13	NA	0.37	NA
5.	Kolkata	7700	0.7175	2.511	0.2597	0.909
6.	Paradip	220	00	1.56	0.00	4.55
7.	Visakhapatnam	4158	0.00	0.00	0.00	0.00
8.	Chennai	1050	0.35	1.06	0.95	2.85
9.	Kochi	358	0.00	2.15	0.00	2.79
10.	New Mangalore	118	0.00	5.8	0.00	16.9
11.	Tuticorin	354	1.95	4.88	5.65	14.12

* Formula (As per IS: 3786 of 1983)

Frequency Rate = No. of Reportable Accidents X 1,000,000/Man-hours Worked#.

Incidence Rate = No. of Reportable Accidents X 1000/ Avg. No. of Persons Employed.

Man-hours worked are calculated on the basis of 362 working days in a year

NA : Not Available

Table 9.3-Classification of Reportable Accidents in Major Ports – According to Agency for the Year-2016

Agency	Mumbai	JNPT	Kandla	Mormugao	Kolkata	Paradip	Visakhap- atnam	Chennai	Kochi	New Mangalore	Tuticorin	TOTAL
I. Lifting appliances	00	00	01(01)	00	02(00)	00	00	00	00	00	00	03(01)
II. Loose gear & Ropes	02(00)	00	00	00	01(00)	00	00	00	01(00)	00	00	04(00)
III. Unitised & Break bulk cargo	10(00)	00	00	02(01)	01(01)	00	00	00	00	01(00)	00	14(02)
IV. Bulk cargo	00	00	00	00	00	00	00	00	00	01(00)	00	01(00)
V. Electrical equipment	00	00	00	01(00)	00	00	00	00	00	00	00	01(00)
VI. Tools & Implements	01(00)	00	00	00	00	00	00	00	00	00	00	01(00)
VII. Means of Access	02(00)	00	00	02(00)	00	00	00	00	00	00	00	04(00)
VIII. Means of Transportat- ion	04(00)	00	05(03)	00	01(00)	01(00)	00	02(00)	00	00	05(02)	18(05)
IX. Other agencies	00	00	02(00)	00	02(01)	00	00	01(00)	00	00	00	05(01)
TOTAL	19(00)	00	08(04)	05(01)	07(02)	01(00)	00	03(00)	01(00)	02(00)	05(02)	51(09)

Note: Figures in brackets represent Fatal Accidents.

Table 9.4- Classification of Reportable Accidents in Major Ports - According to Type for the Year-2016

TYPE	Mumbai	JNPT	Kandla	Mormugao	Kolkata	Paradip	Visakha- patnam	Chennai	Kochi	New Mangalore	Tuticorin	Total
I. Fall of persons	03(00)	00	01(00)	02(00)	03(01)	00	00	01(00)	00	00	00	10(01)
II. Fall of objects	02(00)	00	01(01)	00	00	00	00	00	00	01(00)	00	04(00)
III. Stepping on, striking against or struck by objects excluding falling objects.	09(00)	00	05(02)	01(00)	04(01)	01(00)	00	00	01(00)	01(00)	03(01)	25(04)
IV. Caught in or between	04(00)	00	00	02(01)	00	00	00	00	00	00	00	06(01)
V. Over exertion or wrong movement	01(00)	00	01(01)	00	00	00	00	00	00	00	00	02(01)
VI. Exposure to or contact with extreme temperature	00	00	00	00	00	00	00	00	00	00	00	00(00)
VII. Exposure to or contact with electric current	00	00	00	00	00	00	00	00	00	00	00	00(00)
VIII. Exposure to or contact with dangerous goods	00	00	00	00	00	00	00	00	00	00	00	00(00)
IX. Explosion	00	00	00	00	00	00	00	00	00	00	00	00(00)
X. Others	00	00	00	00	00	00	00	02(00)	00	00	02(01)	04(00)
TOTAL	19(00)	00	08(04)	05(01)	07(02)	01(00)	00	03(00)	01(00)	02(00)	05(02)	51(07)

Note: Figures in brackets represent Fatal Accidents.

Table 9.5- Details of Inspections and other visits in Major Ports during the Year 2016

Sl. No.	Port	Ship	Docks	Gear	Isolated Storage/ Pipelines	Other Visits
1.	Mumbai	162	122	102	01	293
2.	JNPT	12	22	02	00	23
3.	Kandla	93	52	93	01	70
4.	Mormugao	73	57	40	05	23
5.	Kolkata	34	47	50	01	76
6.	Paradip	70	31	70	10	47
7.	Visakhapatnam	60	02	60	01	57
8.	Chennai	181	48	195	03	220
9.	Kochi	41	161	15	04	07
10.	N. Mangalore	96	109	106	01	103
11.	Tuticorin	131	20	131	02	07
Total		953	671	864	29	926

Table 9.6- Details of Prosecution in Major Ports during the Year 2016

Sl. No.	Port	Pending From Previous Year	Launched during the year	Decided during the year	Convicted
1.	Mumbai	00	01	00	N/A
2.	JNPT	00	00	00	00
3.	Kandla	13	00	01	01
4.	Mormugao	00	00	00	00
5.	Kolkata	03	00	00	00
6.	Paradip	03	00	00	00
7.	Visakhapatnam	05	00	00	00
8.	Chennai	05	00	00	00
9.	Kochi	01	00	00	00
10.	New Mangalore	00	00	00	00
11.	Tuticorin	00	00	00	00
Total		30	1	1	1

Table 9.7- Investigation into Reportable Fatal Accidents/Dangerous Occurrences in 2016

Sl. No.	Port	Pending from Previous Year	Initiated during the year	Concluded during the year
1.	Mumbai	00	02	02
2.	JNPT	00	00	00
3.	Kandla	02	05	01
4.	Mormugao	00	00	00
5.	Kolkata	00	02	00
6.	Paradip	00	00	00
7.	Visakhapatnam	00	00	00
8.	Chennai	00	00	00
9.	Kochi	00	00	00
10.	New Mangalore	00	00	00
11.	Tuticorin	00	02	00
Total		02	11	03

Table 9.8- Dock Safety Committee Meetings conducted/Safety Weeks celebrated in 2016

Sl. No.	Port	Committee Meeting	Safety Weeks
1.	Mumbai	04	00
2.	JNPT	03	00
3.	Kandla	03	00
4.	Mormugao	03	00
5.	Kolkata	06	03
6.	Paradip	02	01
7.	Visakhapatnam	04	01
8.	Chennai	04	00
9.	Kochi	04	01
10.	N. Mangalore	04	01
11.	Tuticorin	04	02
Total		41	09

Table 9.9- Total Number of Ships Called in the Major Ports during 2015 and 2016

Sl. No.	Port	Total Nos. of Ships Called			
		Oil Tankers		Others	
		2015	2016	2015	2016
1.	Mumbai	1094	548	3705	1024
2.	JNPT	548	620	2260	2114
3.	Kandla	898	1080	1021	1001
4.	Mormugao	233	130	440	1229
5.	Kolkata	1161	1180	2106	2201
6.	Paradip	392	359	1147	1191
7.	Visakhapatnam	543	693	1491	1279
8.	Chennai	247	249	1488	1386
9.	Kochi	403	383	1225	1317
10.	New Mangalore	701	786	415	648
11.	Tuticorin	202	224	1379	1444
Total		6422	6252	16677	14834

Table 9.10- Cargo Handled in Major Ports during 2015 and 2016

Sl. No.	Port	Cargo Handled					
		Container in TEU's		POL (Tons)		Others (Tons)	
		2015	2016	2015	2016	2015	2016
1.	Mumbai	42992	42859	36330496	18386360	25557342	43990531
2.	JNPT	1371461	1546616	6635687	6411972	719422	800562
3.	Kandla	1625	6502	10634000	13101000	33254000	36027000
4.	Mormugao	24750	29417	1033833	1034845	17249979	38499093
5.	Kolkata	630094	662891	6152	7742	40141	42547
6.	Paradip	6006	2138	19432091	25576945	54319681	60596026
7.	Visakhapatnam	248163	332890	2174532	16316961	58000000	41638341
8.	Chennai	1540454	1518441	11704713	12839050	38350077	37797199
9.	Kochi	391951	480145	14026253	14717779	2643027	2455164
10.	N. Mangalore	69934	88683	24810000	25490000	9930000	13900000
11.	Tuticorin	596883	638752	703594	700905	36207604	37307629
Total		4924313	5349334	127491351	134583559	276271273	313054092

Table 9.11- Safety Facilities in Major Ports during the year 2016

Sl. No.	Port	Safety Facilities		
		No. of Safety Officers	No. of Visits to Safety Exhibition Centers	No. of Competent persons
1.	Mumbai	03	00	25
2.	JNPT	01	00	03
3.	Kandla	01	00	06
4.	Mormugao	01	01	02
5.	Kolkata	05	00	17
6.	Paradip	01	00	05
7.	Visakhapatnam	01	00	11
8.	Chennai	02	01	07
9.	Kochi	03	00	01
10.	New Mangalore	01	01	04
11.	Tuticorin	02	00	07
Total		21	03	88

Table 9.12- Health Facilities in Major Ports during the year 2016

Sl. No.	Port	Health Facilities			
		OSH Centers	Ambulance Rooms	First Aid Centers	Empanelled Doctors
1.	Mumbai	01	02	100	05
2.	JNPT	01	01	18	19
3.	Kandla	00	04	01	00
4.	Mormugao	01	01	01	02
5.	Kolkata	02	04	16	01
6.	Paradip	01	02	03	00
7.	Visakhapatnam	00	01	05	02
8.	Chennai	01	02	02	01
9.	Kochi	01	02	05	01
10.	New Mangalore	01	03	01	00
11.	Tuticorin	01	03	03	00
Total		10	25	155	31

Table 9.13 Welfare Facilities in Major Ports during the year 2016

Sl. No.	Port	Welfare Facilities				
		No. of Welfare Officers	Canteens	Drinking Water	Washing	Urinals
1.	Mumbai	04	11	10	112	548
2.	JNPT	05	04	27	72	76
3.	Kandla	01	02	08	32	32
4.	Mormugao	01	06	12	47	45
5.	Kolkata	02	11	247	144	184
6.	Paradip	01	04	28	08	20
7.	Visakhapatnam	01	05	09	35	48
8.	Chennai	03	09	186	50	50
9.	Kochi	03	06	46	117	118
10.	New Mangalore	00	02	13	04	20
11.	Tuticorin	00	03	09	06	11
Total		21	63	595	627	1152

UNIT LEVEL CONSULTANCY STUDIES & AUDITS-2016

Sl. No.	Title	CLI MUMBAI		RLI KOLKATA		RLI CHENNAI		RLI KANPUR		RLI FARIDABAD	
		Started in 2016	Completed in 2016	Started in 2016	Completed in 2016	Started in 2016	Completed in 2016	Started in 2016	Completed in 2016	Started in 2016	Completed in 2016
1	2	3	4	5	6	7	8	9	10	11	12
1.	Consultancy Study	-	-	-	-	-	-	-	-	1	-
2.	Fire Safety Audit	-	-	-	-	-	1	-	-	-	-
3.	HAZOP study	1	1	-	-	-	-	-	-	1	3
4.	Industrial Hygiene Study	-	-	-	-	-	-	2	1	1	-
5.	Industrial Hygiene Survey	-	-	1	-	-	-	-	-	-	-
6.	Noise Survey	1	-	-	-	-	-	-	-	-	-
7.	Occupational Health Audit	-	1	-	-	-	-	-	-	-	-
8.	Safety Audit	2	3	3	4	-	-	2	2	4	4
9.	Study on Evaluation of Asbestos Fibre Levels	-	-	-	-	-	1	-	-	-	-
10.	Testing of the Quality of Compressor Breathing air	4	4	-	-	-	-	-	-	-	-
11.	Workplace Environment Monitoring Study	4	1	-	-	7	4	-	-	-	-
Total		12	10	4	4	7	6	4	3	7	7

Long Duration (3 or More Days) Training Programmes - 2016

	CLI, Mumbai		RLI, Faridabad		RLI, Kanpur		RLI, Kolkata		RLI, Chennai	
	Participants	Organizations	Participants	Organizations	Participants	Organizations	Participants	Organizations	Participants	Organizations
Professional Programmes										
a) ADIS	35	33	45	31	35	29	40	18	47	46
b) AFIH	47	47	10	6	-	-	6	6	-	-
c) One-month Certificate Course for Supervisory Personnel in hazardous processes factories	-	-	10	8	-	-	-	-	-	-
Specialized Training Programmes										
I. Programmes for Inspectors of Factories										
Basic Course	12	2	-	-	-	-	-	-	-	-
Refresher course	13	13	-	-	-	-	-	-	-	-
Chemical Safety	22	5	-	-	-	-	-	-	-	-
I. Programme for Management Personnel and Factory Supervisors										
a) Training Programme on "Personal Growth & Group Dynamics for Improving Health, Safety and Environment of workers at work	10	1	-	-	-	-	-	-	-	-
b) Training Programme on Making Safety Committee More Effective	23	2	-	-	-	-	-	-	-	-
c) Training workshop on Productivity & Quality Improvement through Effective Employee Participation in Safety, Health and Environment	8	4	-	-	-	-	-	-	-	-
d) 215th Training Course in Industrial Safety for National Safety Council - Maharashtra Chapter	24	11	-	-	-	-	-	-	-	-
e) 3-Day's Refresher Course for Safety Officer	13	13	-	-	-	-	-	-	-	-

II. Programme for Management Personnel										
a) 3- days training Programme on 'Internal Safety Audit'	17	13	-	-	-	-	-	-	-	-
b) 5- days training programme on "Identification, Evaluation and Control of Hazards in Industries"	-	-	-	-	-	-	34	15	-	-
c) 5 days training programme on "Safety & Health Awareness in Ferrous and Non-Ferrous Metals & Paper Industries"	-	-	-	-	-	-	14	4	-	-
d) Training programme on Environmental Hazards & its Management in Industries	-	-	-	-	24	10	-	-	-	-
e) 3 days training programme on "Safety, Health & Environment in Factories, Ports and Construction Industries"	-	-	-	-	-	-	14	4	-	-
f) 5 days training programme on "Safety & Fire Management in Factories, Ports, Construction Industries"	-	-	-	-	-	-	33	15	-	-
g) 3-days collaborative Trg. Prog. With NSC-Maharashtra Chapter on "Safety Management"	20	10	-	-	-	-	-	-	-	-
h) Training Programme on Safe handling of chemicals for safety committee members	22	5	-	-	-	-	-	-	-	-
i) Training programme on "Environmental Hazards & their management at work place"	-	-	13	7	-	-	-	-	-	-
j) 5 days training programme on "Safety & Health Awareness in Construction Industry"	-	-	-	-	-	-	13	7	-	-
k) 3 days training workshop on 'Incident/Accident Reporting Investigation & Analysis'	18	12	-	-	-	-	-	-	-	-
l) Productivity & Quality Improvements through Effective Employees Participation in SHE	8	4	-	-	-	-	-	-	-	-
m) 5 days training programme on "Identification, Evaluation and Control of Hazards in Industries"	-	-	-	-	-	-	38	12	-	-
n) 4-days Trg. Prog. On 'Safe Use of Lifting Machine & Tackles'	26	19	-	-	-	-	-	-	-	-
o) Management of workplace hazard in industry	12	5	-	-	-	-	-	-	-	-
p) Training programme on safety and health management in process industries	5	4	-	-	-	-	-	-	-	-
q) 214th Training Course in Industrial Safety for National Safety Council, Maharashtra Chapter	25	13	-	-	-	-	-	-	-	-
r) Recognition and evaluation of chemical hazards at work place	15	7	-	-	-	-	-	-	-	-

s) Selection and quality assurance of PPE	12	6	-	-	-	-	-	-	-	-
III. Programme for Management Personnel and Factory Supervisors										
a) "Participative Skills in Safety, Health & Environment For Safety Committee Members"	9	1	-	-	-	-	-	-	-	-
b) Industrial Hygiene Techniques	7	6	-	-	-	-	-	-	-	-
c) Inspection & Testing of LA & LG	-	-	-	-	-	-	11	2	-	-
d) Environmental hazards and their management at workplace	14	6	-	-	-	-	-	-	-	-
e) 5 days training programme in Safety Audit	-	-	-	-	-	-	10	5	-	-
f) 5 days training programme on "Safety in Storage, Handling and Management of Hazardous Chemicals"	-	-	-	-	-	-	10	1	-	-
IV. Programme for Trade Union Leaders/Workers/Joint Participation										
a) Participative Skill for safety Committee member in Safety, Health & Environment in Industries	23	2	-	-	-	-	-	-	-	-
b) Participative Skill for safety Committee member in Safety, Health & Environment in Industries	7	2	-	-	-	-	-	-	-	-
c) Team Building for Safety, Health & Environment at Work Place	9	3	-	-	-	-	-	-	-	-
d) Productivity and Quality Improvement through Effective Employees Participation in Safety, Health and Environment	17	4	-	-	-	-	-	-	-	-
V. Programme for Medical doctors										
a) Advanced Refresher Course on Occupational and Environmental Health for Medical Doctors from 08 - 12 August 2016	15	14	-	-	-	-	-	-	-	-
VI. Programme for Paramedical professionals										
a) Training Programme on Occupational Health practice for Nurses, Health/Medical assistant	29	19	-	-	-	-	-	-	-	-
VII. Programme for Factory Inspectors										
a) 3-week Basic Course for Inspectors of factories	12	2	-	-	-	-	-	-	-	-

IN- COMPANY TRAINING PROGRAMMES - 2016

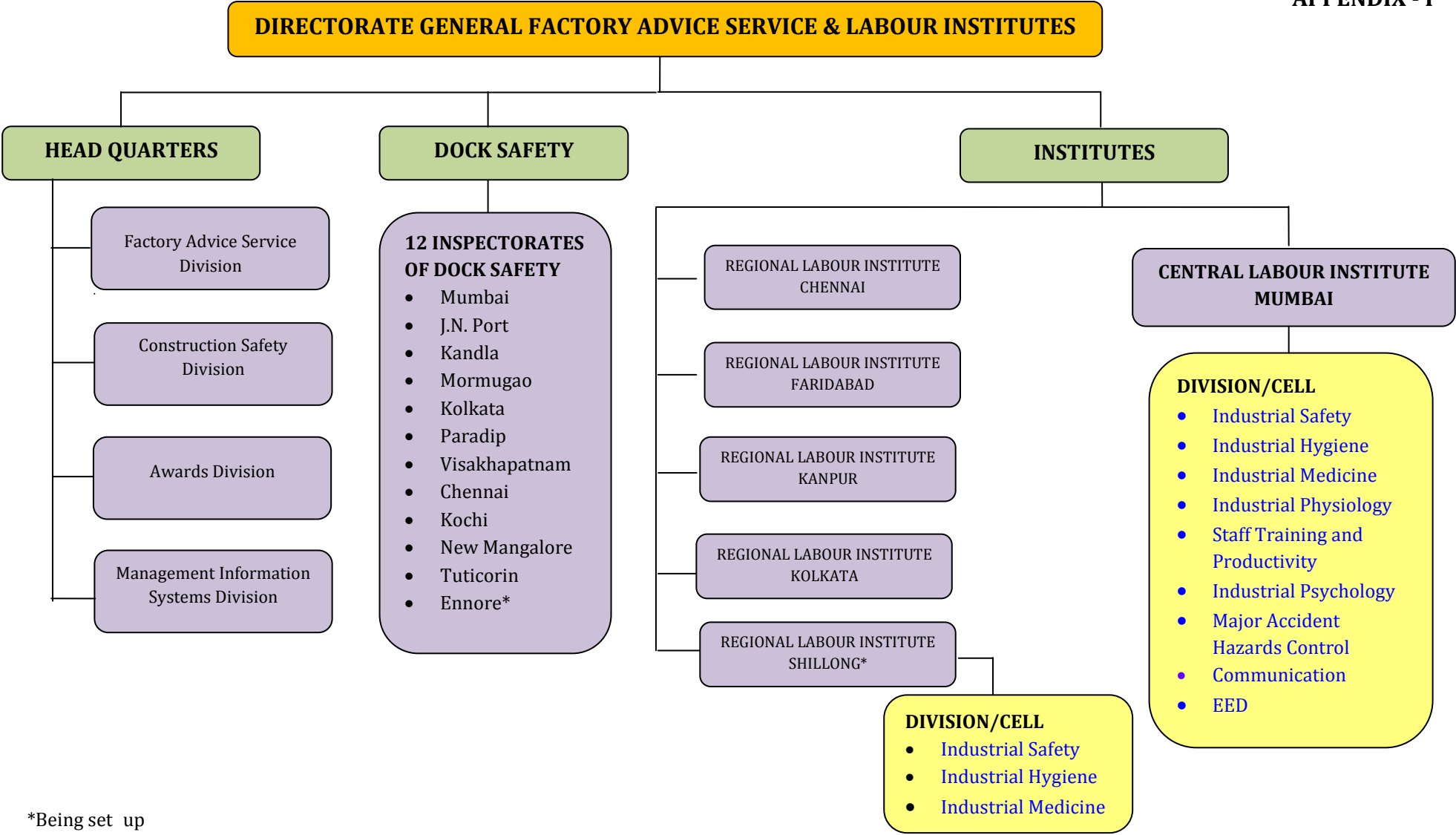
Sl. No	Participants Category and Title	CLI MUMBAI		RLI KOLKATA		RLI CHENNAI		RLI KANPUR		RLI FARIDABAD	
		Progra- mmes	Partici pants	Progra -mmes	Partici pants	Progra- mmes	Partici pants	Progra- mmes	Partici pants	Progra- mmes	Partici pants
A.	Management Personnel										
	a) Behaviour based Safety	-	-	-	-	1	40	-	-	-	-
	b) Training programme on Safety Management	1	32	-	-	-	-	-	-	-	-
	c) Inplant Training programme on Safety Audit	-	-	-	-	-	-	1	20	-	-
	d) Accident Reporting & Investigation	1	43	-	-	-	-	-	-	-	-
	e) Behaviour Based Safety	1	30	-	-	-	-	-	-	-	-
	f) Electrical Safety	1	32	-	-	-	-	-	-	-	-
	g) Industrial Hygiene and work Environment Monitoring	-	-	-	-	-	-	1	33	-	-
B.	Management Personnel and Supervisors										
	h) Static Electricity Safety	1	25	-	-	-	-	-	-	-	-
	i) Occupational Safety and Health Awareness in Workplace	-	-	-	-	1	40	-	-	-	-
	j) 1-day In-plant training programme on "Fire Prevention and usage of personal protective equipments"	-	-	-	-	1	50	-	-	-	-
	Total	5	162	0	0	3	130	2	53	0	0

SHORT DURATION (1-2days) TRAINING PROGRAMMES - 2016

Sl. No.	Participants and Area	CLI MUMBAI		RLI KOLKATA		RLI CHENNAI		RLI KANPUR		RLI FARIDABAD		INSPECTORATE OF DOCK SAFETY	
		Programmes	Participants	Programmes	Participants	Programmes	Participants	Programmes	Participants	Programmes	Participants	Programmes	Participants
A. Management													
1.	1-day Trg. Prog. On 'Safety Mgt'. for Shop floor Managers	1	45	-	-	-	-	-	-	-	-	-	-
2.	Occupational Safety & Health in Factories Manufacturing Asbestos products	1	14	-	-	-	-	-	-	-	-	-	-
3.	Safety Awareness Programme	1	7	-	-	-	-	-	-	-	-	-	-
4.	Two days training programme on "Industrial Hygiene in Industries"	-	-	-	-	1	7	-	-	-	-	-	-
5.	Two days Training programme on "Occupational Safety and Health Management System"	-	-	-	-	1	28	-	-	-	-	-	-
6.	Training Programme on Work Environment Monitoring	-	-	-	-	1	19	-	-	-	-	-	-

7.	One Day Training Programme on Safety & Health for the Safety committee members of Honda India Ltd, Manesar, Gurgaon	-	-	-	-	-	-	-	-	1	10	-	-
8.	Training on safety for Safety Committee members & safety coordinators	-	-	-	-	-	-	-	-	1	29	-	-
9.	Training programme on Management of Hazardous Substances	-	-	-	-	-	-	1	32	-	-	-	-
10.	Training programme on Management of Hazardous substances	-	-	-	-	-	-	1	43	-	-	-	-
11.	Workshop on Hazard & Operability	-	-	-	-	-	-	1	54	-	-	-	-
12.	Occupational Health Safety in Industry	-	-	-	-	-	-	1	16	-	-	-	-
13.	Training programme on Safety and Health in Engineering Industries	-	-	-	-	-	-	1	15	-	-	-	-
B. Trade Union Leader/ Workers/ Joint Participation													
1.	Road Safety	-	-	-	-	-	-	-	-	-	-	1	16
2.	OSH for Stevedoring Companies	-	-	-	-	-	-	-	-	-	-	1	10
3.	OSH Personnel Stevedoring Companies	-	-	1	11	-	-	-	-	-	-	-	-
4.	Road Safety	-	-	1	12	-	-	-	-	-	-	-	-
5.	OSH for Personnel of Stevedoring Companies	-	-	1	12	-	-	-	-	-	-	-	-
6.	Road Safety with vehicular & Equipment movement	-	-	1	16	-	-	-	-	-	-	-	-

7.	Road Safety	-	-	1	17	-	-	-	-	-	-	-	-
8.	Safety in cargo handling	-	-	1	7	-	-	-	-	-	-	-	-
C. Students of Educational Institutions													
1.	Safety Awareness Programme	1	50	-	-	-	-	-	-	-	-	-	-
2.	Industrial Safety	-	-	1	28	-	-	-	-	-	-	-	-
D. Supervisors													
1.	Salient features of Dock Safety Statues	1	15	-	-	-	-	-	-	-	-	-	-
2.	Provision of Dock Workers Act, 1986 & Regulations, 1990 & Safe use of LA&LG	1	5	-	-	-	-	-	-	-	-	-	-
3.	Workshop on Accident Prevention	-	-	-	-	-	-	-	-	-	-	1	17
4.	OSH FOR Stevedoring Personnel	-	-	-	-	-	-	-	-	-	-	1	14
5.	Specialized Workshop on Reporting of Investigation & Analysis of Accidents	-	-	-	-	1	26	-	-	-	-	-	-
6.	Workshop on Safety in Container Handling	-	-	-	-	1	51	-	-	-	-	-	-
E. Worker													
1.	Provisions of Dock Safety Statues pertaining to Safe use of LA & LG	1	5	-	-	-	-	-	-	-	-	-	-
F. Management/Executive and Supervisor													
2.	Training programme on Asbestos and Silica management	1	6	-	-	-	-	-	-	-	-	-	-
TOTAL		8	147	7	103	5	131	5	160	2	39	4	57



*Being set up

APPENDIX - II

Address of DGFASLI and its subordinate offices:

Directorate General Factory Advice Service & Labour Institutes, Mumbai N.S.Mankikar Marg, Sion, Mumbai-400 022. PBX No.91-22-24074538 Fax: 022-24071986 e-mail: fasli@dglasli.nic.in	Central Labour Institute, Mumbai N.S.Mankikar Marg, Sion, Mumbai-400 022. PBX No.91-22-24074538 Fax: 022-24071986 e-mail: cli@dglasli.nic.in
Regional Labour Institute, Kanpur Sarvoday Nagar, Kanpur-208 005 Tel: 0512-2218691,2218692, 2218745 Fax : 0512-2215112 e-mail: rli_kanpur@vsnl.net	Regional Labour Institute, Kolkata Lake Town, Kolkata-700 089 Tel: 033-25342732, 25342735, 25343254 Fax: 033 – 25348182 e-mail: rlikol@vsnl.net
Regional Labour Institute, Chennai Sardar Patel Road, Adyar, TTTI PO, Chennai-600113 Tel: 044-22350737, 22351569, 22355690 FAX : 044- 22352457 e-mail: rlichennai@dglasli.nic.in	Regional Labour Institute, Faridabad Sector 47, Faridabad- 121003 Haryana. Tel: 0129-2468022 FAX : 0129-2437064 e-mail: rlifaridabad@yahoo.co.in
Inspectorate Dock Safety, Mumbai MbPT OSC Bldg., 3rd Floor, Opp GPO, P. D'Mello Road, Mumbai- 400038 Office Tel.: 22692180 / 66565558 Fax: 022-22613391 Email : idsmumbai@dglasli.nic.in	Inspectorate Dock Safety, Kandla Near Bunder Gate, Kandla Port, New Kandla, Post Box No.18,Dist Kutch, Pin – 370210, Gujarat. Office Tel.: 02836 - 270249 Fax: 02836 - 270249 Email : idskandla@dglasli.nic.in
Inspectorate Dock Safety, Mormugao Civil Maintenance Office Building Mormugao Port Trust, Headland Sada, Mormugao, Goa- 403804. Office Tel.: 0832-2520752 Fax: 0832-2520752 Email : idsmormugao@dglasli.nic.in	Inspectorate Dock Safety, Navi Mumbai Jawaharlal Nehru Port, P.O.C. Canteen Bldg., Ground Floor, Sheva, Navi Mumbai – 400 707. Office Tel.: 022-27245099 Fax: 022-22623391 Email : idsjnpt@dglasli.nic.in

<p>Inspectorate Dock Safety, Kolkata Nizam Palace, 1st floor, 2nd M.S.O.Bldg. 234/4 A.J.C. Bose Road, Kolkata-700020. Office Tel.: 033-22830718 / 22830719 Fax: 033-22830718 Email : idskolkata@dglasli.nic.in</p>	<p>Inspectorate Dock Safety, Paradip Badapadia, Post Box NO.126 Paradip – 754142, Orissa. Office Tel.: 06722-222413 Fax: 06722-222413 Email : idsparadip@dglasli.nic.in</p>
<p>Inspectorate Dock Safety, Visakhapatnam Ex. D.L.B. Bldg., 5th Floor, Visakhapatnam Port Area, Visakhapatnam-530 035. Office Tel.: 0891-2563857 Fax: 0891-2563857 Email : idsvizag@dglasli.nic.in</p>	<p>Inspectorate Dock Safety, Chennai 3rd Floor, Anchor Gate Bldg., Rajaji Salai, Chennai – 600 001. Office Tel.:044- 25220888, 25246419 Email : idschennai@dglasli.nic.in</p>
<p>Inspectorate Dock Safety, Tuticorin Tuticorin Port Trust, Admn. Office Bldg. Harbour Estate, Tuticorin – 628004. Office Tel.: 0461-2352372 Fax: 0461- 2352372 Email : dstuticorin@dglasli.nic.in</p>	<p>Inspectorate Dock Safety, Cochin C.D.L.B. Dispensary Bldg., G.V.Ayyar Road, Willington Island, Cochin – 682 003. Office Tel.: 0484-2666532 Fax: 0484-2666532 Email : idscochin@dglasli.nic.in</p>
<p>Inspectorate Dock Safety, New Mangalore New Mangalore Port, Panambur, New Mangalore – 575010. Office Tel.: 0824-2407781 Fax: 0824-2407781 E-mail:idsmangalore@dglasli.nic.in</p>	<p>Inspectorate Dock Safety, Ennore. (being set up) Operated from Inspectorate Dock Safety, Chennai</p>