

1 Directorate General Factory Advice Service & Labour Institutes

1.1 DGFASLI

The Directorate General of Factory Advice Service & Labour Institutes (DGFASLI), formerly known as Chief Adviser of Factories, was set up in 1945 in Delhi, with the objective of advising the Central and State Governments on administration of the Factories Act, and liaising with factories inspection services in the States. The office was subsequently shifted to Mumbai in 1966.

DGFASLI achieved significant importance as an attached office of the Ministry of Labour and Employment, Government of India serving as a technical arm to assist the Ministry in formulation of National policies on Occupational Safety and Health in Factories and Docks.

The Dock Workers (Safety, Health and Welfare) Act 1986 and the Regulations 1990 provide for Safety, Health and Welfare of dock workers. These are enforced by the DGFASLI through the Inspectorates of Dock Safety set up in all the major ports in India.

1.2 Functions:

- Rendering advice and carrying out support research activities for the administration of the Factories Act, 1948 and the Dock Workers (Safety, Health and Welfare) Act, 1986.
- Co-ordinating technical and legal activities to facilitate uniform standards of enforcement of safety and health in manufacturing and port sectors.
- Administration of the Dock Workers (Safety, Health & Welfare) Act, 1986 and Regulations framed there under and enforcing these in the major ports of the country.
- Educating and training employers and employees on matters relating to safety and health.
- Conducting promotional activities by operating schemes for (i) recognition of good suggestions under Vishwakarma Rashtriya Puraskar and good (ii) worker's outstanding contribution in organizations, under Prime Minister's Shram Awards; and (iii) safety performance under National Safety Awards (on behalf of the Ministry).
- Co-operating with International agencies like ILO, WHO, UNDP and advising Central Government in the adoption of international standards concerning safety and health.
- Training of foreign nationals and rendering expert advice to developing countries.
- Building Competence of enforcement agencies.
- Issuing approval to flameproof electrical enclosures.
- Collecting and disseminating information and material relating to safety and health.

1.3 Organisation:

DGFASLI organisation comprises of the headquarters, the 5 Labour Institutes and 11 Inspectorates of Dock Safety.

- Headquarter situated in Mumbai
- Central Labour Institute in Mumbai
- Regional Labour Institutes in Kolkata, Chennai, Kanpur and Faridabad
- Inspectorates of Dock Safety at Mumbai, Kolkata, Chennai, Kandla, Mormugao, Tuticorin, New Mangalore, Cochin, Visakhapatnam, Paradip and Jawaharlal Nehru Port. The Inspectorate of Dock Safety at Ennore is being setup.

In 1959, the Central Labour Institute, Mumbai was established under UNDP Project as a socio-economic laboratory and as a national institute dealing with scientific study of human aspects of industrial development. Subsequently, Regional Labour Institutes (RLIs) were established at Kolkata, Kanpur, Chennai and Faridabad to serve as Regional Centers. The detailed organisation structure is given in **Appendix I** and the contact addresses, the area of operations of the RLIs etc. is shown in **Appendix II**.

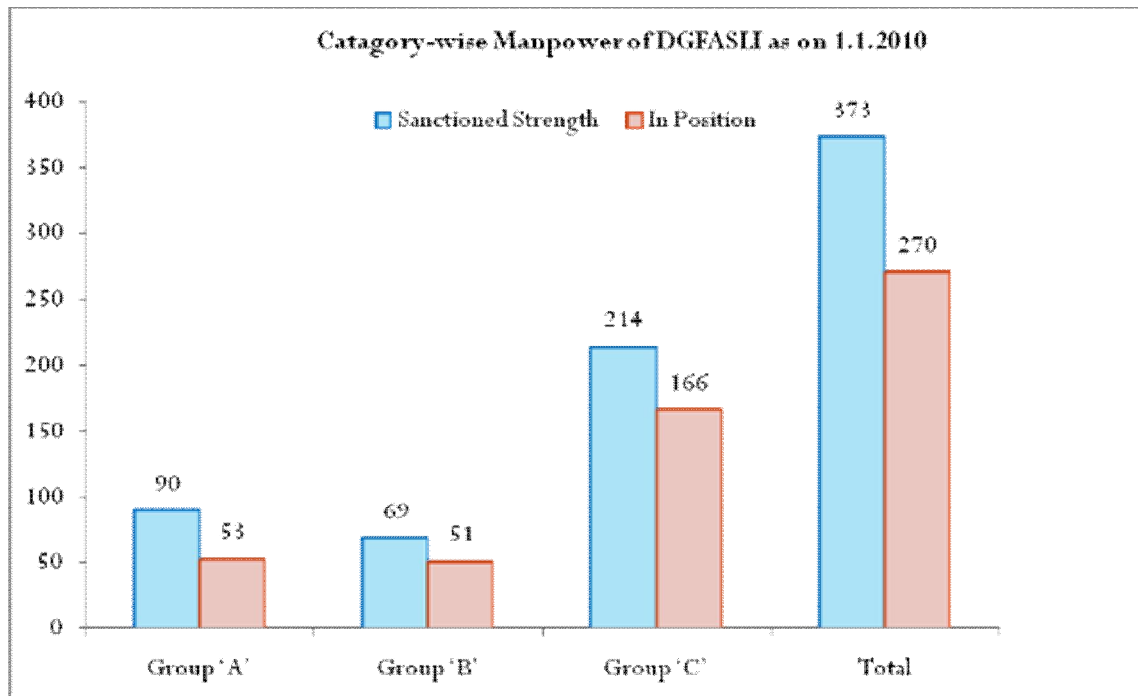
The Labour Institutes are fully equipped with necessary laboratory facilities for conducting studies and surveys in the field of safety and health. The Institutes are also having conference facilities fully supported with modern audio-visual equipment. Industrial Safety, Health and Welfare Centres are also established at these Labour Institutes. Training Centres and Safety Exhibition Centres are also established in some of the inspectorates of dock safety.

1.4 Human Resource: The human-resource in the organization comprises of engineers, medical doctors, industrial hygienists, industrial physiologists, industrial psychologists, statisticians, audio-visual experts, artists etc. The manpower strength of the organization is given in table 1.1.

Table 1.1 Manpower strength of the organization as on 1.1.2011

| Units | Technical | | Administrative | | Total | |
|---------------|------------|-------------|----------------|-------------|------------|-------------|
| | Sanctioned | In Position | Sanctioned | In Position | Sanctioned | In Position |
| Headquarters | 12 | 9 | 47 | 40 | 59 | 49 |
| CLI Mumbai | 50 | 36 | 68 | 60 | 118 | 96 |
| 4 RLIs | 61 | 29 | 79 | 54 | 140 | 83 |
| 11 IDSs | 25 | 20 | 31 | 22 | 56 | 42 |
| Total: | 148 | 94 | 225 | 176 | 373 | 270 |

Chart 1.1



The DGFASLI Organisation

2 Budget

The allocation of funds for the various constituents and plan schemes of the organisation for 2010-2011 and 2011-2012 of the XIth Five year plan is given below:

| | | (Rs. in Lakhs) | |
|--------------------------|--|-----------------------------------|----------------------------------|
| Sl.No. | SCHEMES | Revised Estimates 2010-2011 | Budget Estimates 2011-2012 |
| A. NON-PLAN | | | |
| 1 | DGFASLI & IDS | 628.00 | 621.00 |
| 2 | Research & Training (CLI & RLIs) | 1112.00 | 1074.00 |
| Total: (NON-PLAN) | | 1740.00 | 1695.00 |
| B. PLAN | | | |
| 1 | Establishment of Regional Labour Institute at Faridabad | 150.00 | 150.00 |
| 2 | Strengthening of DGFASLI Organisation and OSH in Factories and Ports | 870.00 NER 203.00 | 696.00 |
| 3 | Identification and Elimination of Silicosis in India | 9.00 NER 1.00 | 10.00 |
| Total: (PLAN) | | 1233.00 | 856.00 |
| GRAND TOTAL: | | 2973.00 | 2551.00 |

3 Plan Schemes

During 2010-2011, two Plan Schemes under the XIth Five Year Plan are taken up by DGFASLI for implementation, namely (1) Establishment of Regional Labour Institute at Faridabad and (2) Strengthening of DGFASLI organization and OSH in Factories & Ports.

3.1 Plan Scheme I: Establishment of Regional Labour Institute at Faridabad

Objectives: The objective of the Scheme is to cater to the needs of the Northern region i.e., the States of Punjab, Haryana, Himachal Pradesh, Jammu & Kashmir, Union territory of Chandigarh and the National Capital Territory of Delhi, in the areas of safety and health.

Table 3.1 Targets & Achievements (January to December 2010)

| Sl. No. | Activities | Targets | Achievements |
|---------|---|-------------------------------|---|
| 1. | Creation of Various Posts | 40 | 18 posts created and 17 posts are to be outsourced. |
| 2. | Setting up of Laboratories | To be spread over this period | Three Labs have been setup. Strengthening of Labs is in progress. |
| 3. | Short & Long duration training programmes / Inplant training programmes | 10 | 10 |
| 4. | One year post Diploma Course in Industrial Safety | 1 | 1 |
| 5. | 3 month course – Associate Fellow of Industrial Health (AFIH) | - | - |
| 6. | Six weeks Training Programme on Industrial Hygiene | - | - |
| 7. | Developing State-wise OSH monitoring | - | - |
| 8. | Training programme for small and medium enterprises | 2 | - |
| 9. | Research/Studies / Surveys | 1 | 1 |
| 10. | National Seminar /Workshops | 2 | 1 |
| 11. | Publication | - | One pocket book in Hindi (Surakhshit jeevan Khushhal jeevan) |
| 12. | Video / film | - | One Video film (Surkhshit jeevan Khushhal jeevan) |

3.2 Plan Scheme II: Strengthening of DGFASLI Organization and OSH in Factories & Ports

Objectives: To strengthen the infrastructure facilities at DGFASLI organization including Central Labour Institute at Mumbai & Regional Labour Institutes located at Chennai, Kanpur & Kolkata, and Inspectorates Dock Safety at the eleven major ports for improving occupational safety and health status of workers in factories, ports and docks throughout the country thereby contributing to prevention of occupational injuries and diseases.

Table 3.2 Targets & Achievements (January to December 2010)

| Sl. | Activities | Targets | Achievement |
|-----|---|--|---------------------------------------|
| 1. | Upgradation of various laboratories at CLI & RLIs | To be spread over the entire plan period | Procurement of items -28 ⁺ |
| 2. | a) Development of National Inventory on OSH information and follow up | 4 | Nil** |
| | b) Upgradation and development of databases | * | 18 |
| | c) Development of Application Programmes | * | 6 |
| | d) Material Safety Data Sheet (MSDS) on request | * | 64 |
| | e) Industry-wise safety and health information | 2 | 35 |
| | f) INDOSHNEWS Publication | 4 | 4 |
| | g) Publication of Manuals, brochures, etc | 2 | 10 |
| 3. | Implementation of minimum agenda for e-Governance | 12 | 12 |
| 4. | Conduction of specialized training programmes, seminars, workshops | 25 | 46 |
| 5. | Conduction of studies/surveys/audits | 25 | 26 |
| 6. | Enforcement activities in major ports (inspection of ships, container ship, loose gears, docks, container yards, hazardous installations, etc.) | 1500 | 1536 |
| 7. | Testing of Respiratory & Non Respiratory PPE | 700 | 750 |
| 8. | Production of Video films | As per the requirements | - |
| 9. | Procurement of audio-visual and communication equipment & software for production of video films, posters, etc. | To be spread over the entire plan period | - |

*Can't be quantified

** Shortage of manpower

⁺ Renovation & instruments purchased for Upgradation of laboratories

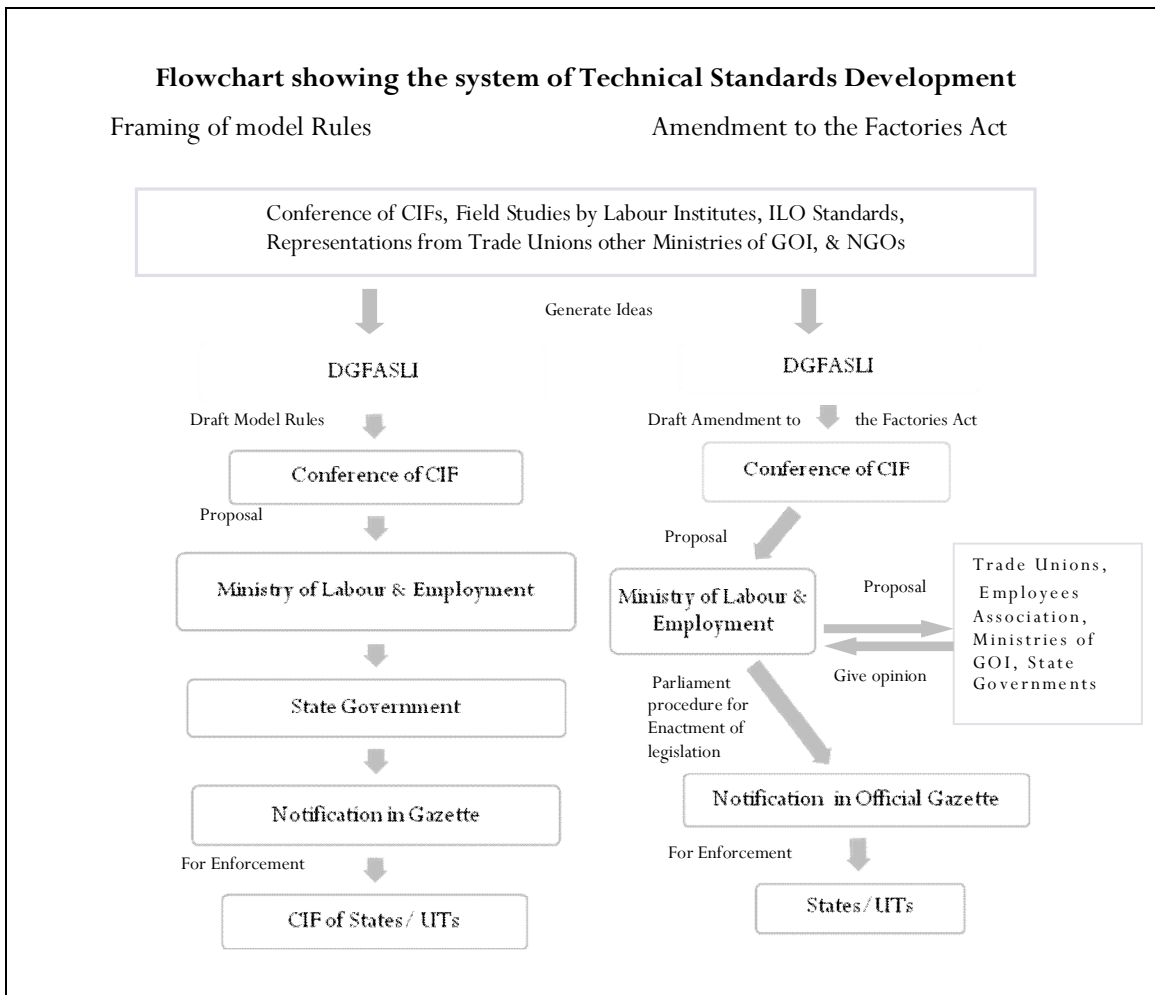
a) Renovation of Working Table of EED. b) Renovation of Working Table of IHL, CLI, c) Spirovit Accessories d) Computerized Spectrophotometer, e) Mercury Analyzer & Electronic Weight Balance, f) Data Logging Personal Heat Stress Monitors – 16 Nos. (12 Nos. for 3 RLIs & 4 Nos. for CLI), g) Sound Level Meter-1No.-CLI, h) UV-VIS Spectrophotometer – 1 No. for CLI, i) 1 Syringe pump for RTL – 1 No. for CLI, j) Multifunctional Ventilation Meter – 3 Nos. for CLI, k) Accubalance Capture Hood – 1 No. for CLI.

4 Safety and Health Improvement in Factories, Docks and Construction

4.1 Co-ordination in the Administration of the Factories Act, 1948

The Factories Act, 1948 is the principal and comprehensive Act of the Parliament which provides for the requirements concerning safety, health and welfare amenities needed by workers employed in factories. The provisions of the Act are applicable to the factories as defined under Section 2m(i), 2m(ii) or notified under Section 85 of the Act by the State Governments.

The Ministry of Labour and Employment is accountable to the Parliament for proper enforcement of the Act. Uniformity in the application of the provisions of the Act in various States and Union Territories is achieved by circulating the Model Rules prepared by DGFASLI, which are incorporated by states in their State Factories Rules with necessary modifications to suit local needs. In the task of framing the Model Rules, the DGFASLI, on behalf of the Ministry of Labour and Employment, enlists the cooperation and involvement of the State Governments by convening annually a Conference of Chief Inspectors of Factories. The Conference discusses all matters relating to the administration of the Act as well as proposed amendments. Besides, the Conference also serves as a forum for discussion on the progress made in the application of techniques and methods for prevention of accidents and ill-health in factories.



4.2 During the year 2010 comments/clarifications / replies/ materials were prepared on the following matters:

Table 4.1

| Sl. | Comments/ Clarifications / Replies/ Materials | No. |
|-----|--|-----|
| 1. | Matters regarding Factories Act, 1948 | 15 |
| 2. | Matters regarding ILO Conventions/ILO Meetings | 8 |
| 3. | Matters relating to Parliament Questions and Parliamentary Standing Committee on Labour meetings | 38 |
| 4. | Matters regarding Court Cases | 4 |
| 5. | Other Important Matters | 46 |

4.3 **The 50th Conference of Chief Inspectors of Factories** was held at Mathura, Uttar Pradesh from 7-9 April, 2010. The Conference was inaugurated by Shri S.K.Srivastava, IAS, Additional Secretary to the Government of India, Ministry of Labour and Employment and presided over by Shri R.C.Srivastava, IAS, Principal Secretary, Department of Labour, Government of Uttar Pradesh. Dr.A.K.Chakrabarti, Director General, DGFASLI delivered the keynote address. The Conference was attended by 24 Chief Inspectors of Factories from various States/Union Territories besides 10 officials from DGFASLI.

Some of the important decisions taken during the Conference are establishing a uniform procedure for carrying out inspections of factories for effective implementation of the provisions of the Factories Act, 1948, responsibility of occupier for safe disposal of hazardous substances stored in the premises while closing down the factory, extending the application of Section 85 to units which undertake operations including hazardous substances like asbestos, pesticides, grinding/crushing stones containing silica etc., submission of e-returns, reviewing and revising of the Model Rules, capacity building of State Factory Inspectorates. Further, four Working Groups were constituted to deliberate and finalise on important issues relating to Testing of Pressure Vessels, uniform checklist for carrying out inspections, data collection on OSH, review and revising of the Model Rules, etc.

4.4 **Implementation of the Right to Information Act 2005**

- The enactment of Right to Information Act, 2005, is a gateway for the citizens to seek information under the control of Public Authority and promote transparency and accountability.
- DGFASLI being one of the Public Authorities, the C.P.I.O. received a total no. of 86 applications during the period January to December, 2010. All applications were attended to as per the provisions of the Act.
- Ministry of Personnel, Public Grievances & Pensions, Department of Personnel & Training, has designed and developed a 'logo' for "Right to Information" under the RTI Act, 2005. Guidelines for usage of this RTI logo have also been developed to improve and standardize the visual presentation and application of same. Action has been initiated by CPIO, DGFASLI for proper usage of the logo, as given in the guidelines.

4.5 **Ship Breaking:** The ship-breaking operations are covered under the provisions of the Factories Act, 1948 and the state factories Rules framed there-under. In addition, considering the hazardous nature of operations and health hazards associated with these operations, the Government of Gujarat has notified a separate schedule under Section 41 of the Factories Act, 1948. The Government

of India have also taken special policy level measures as well as promotional activities for ensuring safety, health and welfare of workers employed in ship-breaking operations.

- DGFASLI is a member of the inter-Ministrial Committee set-up for looking in to the problems in Ship breaking Industry.
- A one-day National Seminar on Emerging Challenges for Occupational Safety and Health in ship breaking industry was organized on 17.08.2010 at Alang, in collaboration with Directorate of Industrial Safety and Health, Gujarat for the stake holders in ship breaking industry. The seminar was inaugurated by Shri G.M.E.K. Raj, Deputy Director General & HOD, DGFASLI. Shri D.C.Choudhary, Director DISH, Gujarat presided over the function. The seminar was attended by 110 delegates. Officers from DGFASLI, GMB, DISH and Ship Re-cyclers association shared their experiences.



Shri G.M.E.K.Raj, Deputy Director General & HOD, DGFASLI and Shri D.C.Choudhary, Director DISH at the One-day National Seminar on 'Emerging Challenges for Occupational Safety and Health in ship breaking industry' on 17.08.2010 at Alang.

4.6 Administration of the Dock Workers (Safety, Health and Welfare) Act, 1986 and Regulation framed there under and the Environment (Protection) Act, 1986 and Rules framed there under:

The Dock workers (Safety, Health and Welfare), Act, 1986 and the Regulations 1990 framed there under cover safety, health and welfare aspects of all the workers engaged in dock work, whether in loading or unloading of cargo on board the ship, alongside it or in transit sheds, warehouses or yard etc., within the port premises including those engaged in chipping and painting of ships. These statutes are in line with ILO Convention No. 152 on Occupational Safety and Health (Dock Work).

Administration of the Act and the Regulations in major ports is carried out by the Ministry of Labour and Employment, through DGFASLI, Mumbai. The Director General is the Chief Inspector of Dock Safety appointed under the Act. The Chief Inspector of Dock Safety is also an authority for enforcement of the Manufacture, Storage and Import of Hazardous Chemicals Rules, 1989 framed under the Environment (Protection) Act, 1986, in the major ports.

The above statutes are enforced by the Inspectors posted at Inspectorate of Dock Safety at all the major ports viz. Mumbai, Kolkata, Chennai, Kandla, Mormugao, New Mangalore, Cochin, Tuticorin, Visakhapatnam, Paradip and Jawaharlal Nehru Port except Ennore where the Inspectorate is yet to be set up. Presently, the enforcement in this Port is carried out by the Inspectors posted in Inspectorate Dock Safety, Chennai. Inspectors also enforce the Marking of Heavy Packages Act, 1951 and Rules framed there under in the major ports.

The main function of the Inspectorates is to ensure the compliance with the provisions under the statutes. The statutory responsibilities of Inspector include inspection of ships, tankers, loose-gears, container-handling equipment, docks, container-yard and terminal, hazardous installations and isolated storages, tanks; carrying out the investigation of accidents (fatal and serious) and dangerous occurrences; prosecution of employers, attending to complaints, providing advisory services and conducting safety promotional activities like training programmes, workshops, celebration of safety week etc. The Inspectorate also prosecutes the agency responsible for serious violation of any provision of the Act and Regulations framed there under.

The **27th Conference of Inspectors of Dock Safety** was held at Kandla from 7th & 8th Sept. 2010. The objective of the Conference was to discuss various issues in connection with the administration and enforcement of the Dock Safety Statutes and the Manufacture, Storage and Import Hazardous Chemicals Rules, 1989 and draw a suitable action plan for improving the system. The Conference was inaugurated by, Shri P.D. Vaghela, I.A.S., Chairman Kandla Port Trust, Kandla. Presidential Address was delivered by Shri GMEK Raj, Deputy Director General & Chief Inspector of Dock Safety. Distinguished guests farom Kandla Port, Trade Union representatives, etc. attended the Inaugural function. All the Inspectors of Inspectorate of Dock Safety from all the major Ports attended the Conference.

A **National Seminar on "Strengthening of OSH System in Port Sector in India"** was held at CLI Auditorium on 16.11.2010 in collaboration with ILO New Delhi. The Seminar was inaugurated by Shri GMEK Raj, Deputy Director General, DGFASLI & Chief Inspector of Dock Safety. Shri S.B. Mathur, Deputy Director General welcomed the delegates. Ms Ingrid Christensen, Senior Specialist on Occupational Safety & Health, ISH, New Delhi delivered the Key Note Address. Shri S.R. Kulkarni, President, Transport and Dock Workers Union, Mumbai and Shri A.K. Gadhari, Chief Mechanical Engineer, Mumbai port Trust were among the high level dignitaries present



Shri P.D. Vaghela, I.A.S., Chairman Kandla Port Trust, Kandla and Shri GMEK Raj, Deputy Director General & Chief Inspector of Dock Safety inaugurating the 27th Conference of Inspectors of Dock Safety held at Kandla from 7th and 8th Sept. 2010.



Shri GMEK Raj, Deputy Director General, DGFASLI & Chief Inspector of Dock Safety, Shri S.B. Mathur, Deputy Director General, DGFASLI, Ms Ingrid Christensen, Senior Specialist on OSH, ILO, Shri S.R. Kulkarni, President, Transport and Dock Workers Union, Mumbai and other dignitaries at the National Seminar on "Strengthening of OSH System in Port Sector in India" held at CLI Auditorium on 16.11.2010

on the occasion. Two ILO Experts from Brazil on inspection systems discussed about the inspection system in Brazil. Ms Ingrid delivered a talk on "ILO and its Port related activities". The Seminar was attended by 89 delegates from all over the country .

A Two-day National Workshop "**Strengthening of OSH Inspection System in Port Sector of India**" was organized in Chennai in collaboration with ILO New Delhi on 18th and 19th Nov. 2010. The Workshop was inaugurated by Shri GMEK Raj, Deputy Director General and Head of Department, DGFASLI. Shri S.B. Mathur, Deputy Director General, DGFASLI welcomed the delegates. Ms Ingrid Christensen, Senior Specialist on OSH, ISH, New Delhi delivered the Key Note Address. The Workshop was attended by all the Inspectors of Dock Safety and invitees from Chennai Port, Ennore Port and Private Terminal Operators from Chennai. A total of 27 participants attended the Workshop.

Safety week celebrations were held at the Ports of Mumbai, Kolkata, Visakhapatnam, Chennai, New Mangalore, Cochin, J.N.Port, Kandla and Tuticorin. During the celebrations, various safety promotional activities like safety poster competitions, safety quiz contest, first-aid and fire fighting demonstrations and appreciation programmes were organized for benefit of dock workers and their families.

4.7 Safety and Health in Construction Sector:

The Building and Other Construction Workers (Regulation of Employment and Conditions of Service) Act (BOCW Act) was enacted in 1996. The Central Government is the appropriate government for notifying the rules and regulations under the Act as well as the enforcement of the provisions under the said Rules, in respect of establishments in relation to which Central Government is the appropriate government under the Industrial Disputes Act, 1947. In respect of other establishments, the State Government is the appropriate government for notifying the Rules and enforcing the provisions. DGFASLI at the behest of the Ministry of Labour and Employment had done the entire work of drafting the above said Act 1996 as well as framing of the Central Rules of 1998 made thereunder. The Director General, DGFASLI is a member on the Central Advisory Committee constituted under Rule 10 of the Central Rules of 1998. DGFASLI was entrusted with the task of processing applications in respect of approval of Competent Persons under Rule 2(j) of the Central Rules, 1998. DGFASLI processed applications for granting competency under the said Rules for the purpose of testing, examination or annealing and certification of lifting appliances, lifting gears, wire ropes or pressure plants and equipment and forwarded the recommendations to the Ministry of Labour and Employment for appointment of competent persons.

4.8 Studies and Surveys

(a) **National Studies and Surveys** are undertaken by DGFASLI, in its efforts towards helping the Central Government to ascertain the status of working conditions, safety and health in factories and docks, and to formulate the appropriate standards for inclusion in statutes.

Table 4.2 National Studies and Surveys undertaken during 2010

| Sl. | National Studies and Surveys | Status |
|-----|---|-----------|
| 1 | Regional Study on assessment of airborne asbestos chemical contaminants in the work environment of painting operations in Goa | Completed |
| 2 | Occupational Health & Hygiene Study at Stone Breaking units in the State of Tripura | Completed |

(b) State level Studies and Surveys are undertaken in the State in certain priority areas to ascertain status of Safety Health and Environment at work place.

Table 4.3 State level Studies and Surveys undertaken during 2010

| Sl. | State level Studies and Surveys | Status |
|-----|--|-----------|
| 1 | Investigation of an accident at Balco, Korba in Chhattisgarh | Completed |
| 2 | Status of Health & work environment in Sugar Industries in U.P. | Completed |
| 3 | Joint investigation of an accident at NTPC, Dadri in collaboration with Director of Factories U.P. | Completed |
| 4 | Regional Project on prioritization of Major Accident Hazard Factories in Uttarakhand | Completed |

c) Unit Level Consultancy Studies are carried out at the request of the management and reports are submitted for implementation of the recommendations for further improvement in factories concerned. The institute-wise details of these studies are given in **Annexure I**.

Table 4.4 Unit level consultancy studies undertaken during 2010

| Sl. | Area | No. of Consultancy Studies | |
|--------|--------------------------------|----------------------------|----------------|
| | | Completed | Under Progress |
| 1 | Safety Audit | 13 | 8 |
| 2 | Occupational Health | - | 1 |
| 3 | Airborne Chemical Contaminants | 15 | 5 |
| 4 | Noise Assessment Study | 1 | 1 |
| 5 | Ventilation | 1 | 1 |
| 6 | HAZOP | 2 | - |
| 7 | Safety Audit-MAHC | 2 | 1 |
| 8 | Identification of Hazard | 3 | 1 |
| 9 | Ergonomic Survey | 1 | - |
| 10 | Transport Hazard Study | 1 | - |
| 11 | Work Environmental study | 9 | 2 |
| 12 | Illumination Assessment study | 2 | 1 |
| 13 | Breathing Air Quality | 1 | - |
| 14 | Dispersion Modeling | 2 | - |
| Total: | | 53 | 21 |

4.10 Education and Training

DGFASLI organized workshops, seminars, training programmes etc. for the benefit of industries, ports, enforcement officials etc.

4.10.1 **Seminars** are organized on the basis of findings and recommendations of various national studies; unit level studies and surveys; and issues and priorities of national concern. These seminars provide platform for discussing various issues related to safety and health; and recommend National level/ State level/ Unit level action plan in respective area of concern.

Table 4.4 Seminars conducted during 2010

| Sl. | Title | Venue | Date | Parti. | Organi. |
|--------------|--|-----------------------------|-------------|-------------|------------|
| 1. | Safety & Productivity in Tea manufacturing Industries" organised jointly with Chief Inspector of Factories, Assam | Guwahati, Assam | 26/01/10 | 100 | 80 |
| 2. | Safety in the Use of Lifting Tackles | CLI, Mumbai | 09/02/10 | 304 | 35 |
| 3. | Symposium on "Occupational Safety & Health – Challenges in MSME Sector" | RLI, Faridabad | 10/02/10 | 75 | 58 |
| 4. | Seminar on "Safety, Health and Environment Hazard Management in Industries" organised jointly with Indian Chamber of Commerce, Kolkata. | Haldia, West Bengal | 19/02/10 | 106 | 72 |
| 5. | "Prevention of OSH Hazards in Petroleum Industries" | Guwahati, Assam | 11/03/10 | 102 | 28 |
| 6. | "OSH provisions under BOCW Act, 1996" | RLI, Chennai | 07/05/10 | 62 | 31 |
| 7. | "Dispersion Modelling and Impact Assessment of Toxic and Flammable Releases" | RLI, Chennai | 24-25/06/10 | 11 | 9 |
| 8. | "Occupational Safety and Health in IT and ITES Industries" | RLI, Chennai | 26/07/10 | 225 | 49 |
| 9. | " Emerging Challenges for Safety and Health in Ship Recycling Industry" organised jointly with Directorate of Industrial Safety and Health, Gujarat. | Alang, Gujarat | 17/08/10 | 125 | 100 |
| 10. | "Issues on Occupational Safety & Health Hazards in Power Generation Industries" organised jointly with NEEPCO | NEEPCO Auditorium, Shillong | 06/10/10 | 100 | 50 |
| 11. | "Emerging Trends in Occupational Safety and Health Management" | RLI, Chennai | 29/10/10 | 197 | 123 |
| 12. | "Balancing Increased Productivity and Improved working Condition in Factories - a Review" organised jointly with Directorate of Factories & Boilers, Tripura | Agartala, Tripura | 02/11/10 | 86 | 43 |
| 13. | "Strengthening of OSH System in Port Sectors in India" organised jointly with ILO, New Delhi | CLI, Mumbai | 16/11/10 | 89 | 24 |
| 14. | Best Practices in Safety, Health and Environment at Workplace. | RLI, Chennai | 22/11/10 | 225 | 116 |
| 15. | "Behaviour Based Safety" | CLI, Mumbai | 26/11/10 | 99 | 8 |
| 16. | "Sustainable Industrial Growth through Prevention of Occupational Safety, Health & Environment Hazards" organised jointly with Directorate of Factories, West Bengal and Indian Chamber of Commerce, Kolkata | Durgapur, West Bengal | 03/12/10 | 89 | 59 |
| Total | | | | 1995 | 885 |

4.10.2 The **workshops** are organized to enhance the skills of the participants in dealing with matters connected to safety, health, productivity and environment etc.

Table 4.7 Workshops conducted during 2010

| Sl. | Title | Venue | Date | Part. | Orgs |
|-------|---|--------------------------|-------------|------------|------------|
| 1. | Workshop on "Higher productivity & better to place at work" | Ponda, Goa | 04/02/10 | 43 | 43 |
| 2. | Workshop on "Higher productivity & better to place at work" | Ponda, Goa | 05/02/10 | 20 | 20 |
| 3. | Workshop on "Silicosis in Stone Crushing Industries" by DGFASLI in collaboration with Inspectorate of Factories, Govt. of Assam. | Guwahati | 25/02/10 | 60 | 40 |
| 4. | Regional Workshop to Operationalise National Policy on Safety, Health & Environment | RLI, Faridabad | 09/03/10 | 52 | 34 |
| 5. | Regional workshop to Operationalise National Policy on Safety, Health & Environment at work place. | RLI, Kanpur | 16/03/10 | 100 | 65 |
| 6. | Regional Workshop to Operationalize National Policy on Safety, Health & Environment at Workplace | RLI, Kolkata | 19/03/10 | 60 | 40 |
| 7. | Regional Workshop to Operationalize National Policy on Safety, Health & Environment at Workplace | RLI, Chennai | 25/03/10 | 81 | 54 |
| 8. | Workshop on "Dispersion Modeling and Impact Calculation" | CLI, Mumbai | 26-30/04/10 | 15 | 3 |
| 9. | Selection & Quality Assurance for Effective Use of PPE | CLI, Mumbai | 28-30/04/10 | 11 | 7 |
| 10. | Workshop on "Modern Techniques of Inspection for the Factory Inspectorate with specific reference to Building and Other Construction Workers (Regulation of Employment and Conditions of Service) Act 1996 and Rules" | RLI, Chennai | 22/06/10 | 37 | 1 |
| 11. | Intensive training workshop on Workplace Health promotion | RLI, Faridabad | 26-27/09/10 | 30 | 25 |
| 12. | Workshop in Monitoring of work environment | RLI, Kanpur | 06-09/10/10 | 17 | 9 |
| 13. | Workshop on Hazard & Operability | CLI, Mumbai | 13-15/10/10 | 10 | 4 |
| 14. | Workshop on First Aid Measure in Dock Work. | Kolkata | 10/11/10 | 46 | 2 |
| 15. | National Workshop on "Strengthening of OSH Inspection System in Port Sector in India" organised jointly with ILO, New Delhi. | Chennai | 18-19/11/10 | 27 | 5 |
| 16. | Higher Productivity & Better Place to Work | Asia Motor Works, Bhuj | 02/12/10 | 37 | 37 |
| 17. | Higher Productivity & Better Place to Work | Asia Motor Works, Bhuj | 03/12/10 | 27 | 27 |
| 18. | Improvement of OSH Awareness in Paper Industries organised by DGFASLI in collaboration with Directorate of Factories, Govt. of Assam | Nagaon Paper Mill, Assam | 07/12/10 | 62 | 4 |
| 19. | Work shop on "Safety Audit for Executives" | RLI, Kanpur | 13-15/12/10 | 21 | 11 |
| Total | | | | 756 | 431 |

4.10.3 Details of some of the seminars and workshops are given below:

1. A seminar on "**Safety & Productivity in Tea Manufacturing Industries**" was organised on 26th January, 2010 in Guwahati, Assam by DGFASLI in collaboration with Chief Inspector of Factories, Govt. of Assam. The objective of the seminar was to implement National Policy on Safety, Health and Environment at Workplace by OSH Stakeholders & to improve the OSH awareness for betterment of OSH management and improvement of productivity. The seminar was formally inaugurated by Shri Dileswar Tanti, Former Labour & Employment, Government of Assam and renowned Trade Union Leader. The Seminar was attended by 60 dignitaries & delegates from 28 organisations.
2. The Central Labour Insitute, Mumbai celebrated Institute Day on 9th Feb. 2010 . On this occasion a one day seminar on "**Safety in the Use of Lifting Tackles**" was conducted. The seminar was inaugurated by Prof. K.G.Narayankhedkar, Director, VJTI, Mumbai. The objective of the seminar was to facilitate the delegates to understand various information of lifting tackles with a view to ensure safe practices. The seminar was attended by 304 delegates comprising Safety Professionals, Maintenance Engineers, Competent Persons, Manufacturers and Users of Lifting tackles from industries. Off-shore operations and Ports and the employees of DGFASLI organisation. During the valedictory session, certificates were awarded to the successful students of Advanced Diploma in Industrial Safety (batch 2007-08) and Associated Fellow in Industrial Health June 2009.
3. The Regional Labour Institute, Faridabad celebrated Institute Day on 10th Feb. 2010. On this occasion, a Symposium on "**Occupational safety and health - Challenges in MSME Sector**" was organised. The symposium was inaugurated by Shri GMEK Raj, Deputy Director General & HOD, DGFASLI, Mumbai in presence of Shri Rajiv Chawala, President Faridabad Small Industries Association. The symposium was attended by 75 delegates from 58 organisations. On this occasion an Exhibition on "Occupational Safety and Health" was organised where various PPE, work-environment monitoring equipment manufacturers and suppliers, book publishers and suppliers, educational and training films producers, etc put up their stalls and displayed their products.
4. **A One day Seminar on "Safety, Health and Environment Hazard Management in Industries"** was held at Hotel Golden Retreat, Haldia on 19th February, 2010 by Indian Chamber of Commerce, Kolkata in collaboration with DGFASLI. The objective of the seminar was to enhance awareness and implementation of National Policy. It was attended by 102 dignitaries and delegates from 80 organisations.
5. A Workshop on "**Silicosis in Stone Crushing Industries**" was organised on 25th February, 2010 at Hotel Ambarish, Guwahati in Assam by DGFASLI, Mumbai in collaboration with Inspectorate of Factories, Government of Assam. The objective of the workshop was implementation of National Policy on Safety, Health and Environment at Workplace and increasing the OSH awareness of various agencies involved with Silica Dust in industries. Chief Guest Shri K.K.Mittal, IAS, Chief Secretary, Department of Labour & Employment, Government of Assam, inaugurated the workshop. The workshop was attended by 60 dignitaries & delegates from 28 organisations.
6. A Regional Workshop on "National policy on Safety, Health and Environment at workplace" was held on 9th March, 2010 at RLI Faridabad.
7. A one day Seminar on "**Prevention of OSH Hazards in Petroleum Industries**" was held at Hotel Agneedeeep Continental, Guwahati in Assam on 11th March, 2010 by DGFASLI in collaboration with Chief inspector of Factories, Govt. of Assam. It was attended by 102 dignitaries & delegates from 28 organisations.
8. A Regional Workshop to Operationalize National Policy on Safety, Health and Environment was held at Regional Labour Institute, Kanpur on 16th March, 2010. It was attended by 100 delegates from 23 organisations.

9. A Regional Workshop to Operationalize National Policy on Safety, Health and Environment at Workplace was held at Regional Labour Institute, Kolkata on 19th March, 2010. It was attended by 60 participants from Eastern and North Eastern parts of the country.
10. The **Second National Exhibition of Books and Films on Occupational Safety and Health** was organised at Central Labour Institute, Mumbai on 23rd April, 2010. Shri A.C.Pandey, Joint Secretary to Govt. of India, Ministry of Labour & Employment inaugurated the Exhibition. Dr. A.k.Chakraborti, Director General, (DGFASLI), presented the key note address during the inaugural function. He announced the establishment of an archive on Occupational Safety and Health Films, where anyone can get complete information about the films. The book exhibition was participated by 8 leading book agencies of Mumbai, and 25 documentary films on various aspects of Occupational Safety and Health were screened in the film exhibition.
11. One day Seminar on "**Issues on Occupational Safety & Health Hazards in Power Generation Industries**" was held at Shillong by DGFASLI in collaboration with NEEPCO at NEEPCO Auditorium on 6th October, 2010
12. A National Seminar was conducted on **Behaviour Based Safety** at CLI, Auditorium on 26.11.2010. The seminar was attended by about 300 participants including 99 delegates from across the country & officers and staff from CLI, DGFASLI, IDS & PAO. Experts from leading industries made presentation on Human Behaviour: ABC Model, Observation process and providing feed back, Management commitment for BBS, Union leaders support and involvement for implementing BBS, role of workers in BBS, Successful implementation of BBS in Industry - engineering, chemical & process industries & Case study. A good amount of interaction was held between the faculty and participants.
13. One day seminar on "**Balancing Increased Productivity and Improved Working Condition in Factories - A Review**" at Pragna Bhavan, Hall No.3 Agartala, Tripura was organised by DGFASLI, Ministry of Labour & Employment, Govt. of India in collaboration with Directorate of Factories & Boilers, Govt. of Tripura on 2nd November, 2010. The seminar was attended by 86 participants from 42 organisations.
14. Seminar on "**Sustainable Industrial Growth through Prevention of Occupational Safety, Health & Environmental Hazards**" was organised by DGFASLI, Ministry of Labour & Employment, Govt. of India & Directorate of Factories, Government of West Bengal in collaboration with Indian Chamber of Commerce, Kolkata at Hotel City Residency, Durgapur on 3rd December, 2010. The seminar was attended by 89 dignitaries and delegates from 59 organisations. Shri U.K.Das, Director (Safety), RLI, Kolkata delivered speech on importance of holding the Seminar by DGFASLI in view of declaration of National Policy on Safety, Health and Environment at Workplace by Govt. of India discussed about the role of the Government, Industries, Trade Unions and other related OSH Stakeholders towards various aspects of the National Policy. The Seminar was formally inaugurated by Shri Dipankar Dutta Gupta, Managing Director, East India Pharmaceutical Works & Chairman National Policy Safety Council, West Bengal chapter.
15. A one day training workshop on "**Improvement of OSH awareness in Paper Industries**" was organised by DGFASLI, Ministry of Labour & Employment, Govt. of India in collaboration with Inspectorate of Factories, Govt. of Assam at the auditorium of Nagaon Paper Mill, HPC, Jagiroad on 7th December, 2010. The workshop was attended by 62 dignitaries and delegates from 4 organisation. The Training Programme was formally inaugurated by lighting the inaugural lamp by the Shri H.N.Baruah, Chief Executive, Hindustan Paper Corporation Ltd., Assam.

4.10.4 Further, to upgrade the technical competence of officers and scientific staff of the organization, 4 **Professional Interaction & Update Seminar** (PIUS) and 1 **Satellite Professional Interaction & Update Seminar** (SPIUS) were organized.

Table 4.5 Professional Interaction & Update Seminar (PIUS)

| Sl. | Title | Date | Participants | Organisations |
|--------------|--|----------|--------------|---------------|
| 1. | Modern trends & best practices in fire prevention and control | 28/04/10 | 35 | 1 |
| 2. | Office Fire Safety - Prevention & Control (PIUS) | 02/06/10 | 32 | 1 |
| 3. | First Aid & Emergency Care (PIUS) | 08/07/10 | 23 | 1 |
| 4. | Professional Interaction Update Seminar (PIUS) on Safety in the Use of LPG | 08/12/10 | 137 | 4 |
| Total | | | 227 | 7 |

Table 4.6 Satellite Professional Interaction Update Seminar (SPIUS)

| Sl. | Title | Date | Participants | Organisations |
|--------------|---|----------|--------------|---------------|
| 1. | Occupational Safety and Health Labour Inspections | 01/04/10 | 29 | 1 |
| Total | | | 29 | 1 |

4.10.5 Longer Duration Training Programmes:

- a) **Professional Programmes:** To fulfill the need of qualified Safety officers, and Factory Medical Officers in the industry, the organisation conducts one year Advance Diploma Course in Industrial Safety and three months “Associate Fellow of Industrial Health” Certificate Course respectively. In order to meet the demands of supervisors competent to handle and supervise hazardous processes in industries, a one month certificate course in industrial safety and health was started at CLI Mumbai as well as RLI Kolkata, Kanpur and Chennai.
- b) Specialised training programmes are conducted for identified target groups such as Senior Managers, Safety Officers, Factory Medical Officers, Supervisors, Trade Union Officials and Safety Committee members from Industry. Basic course for inspectors of factories who are freshly recruited is conducted to impart technical knowledge and skills in the field of safety and health. In view of the need for inspection of specific industries and Major Accident Hazards units, specialised courses are also conducted for senior inspectors. Some of the programmes are exclusively conducted for the union-leaders where joint participation of management personnel and union representatives from industries are the special features of some programmes.

The institute-wise details of Longer Duration Training Programmes and Professional Programmes are given in **Annexure-II**.

Table 4.9 Longer Duration Training Programmes:

| Sl.No. | Area and Participant | Programmes | Participants | Organisations |
|-----------|---|------------|--------------|---------------|
| A. | Professional Programmes | | | |
| | Advance Diploma in Industrial Safety | 5 | 162 | 132 |
| | AFIH | 2 | 55 | 49 |
| | One-month Certificate Course for Supervisory Personnel in hazardous processes factories | 2 | 16 | 10 |
| B. | Inspectors of Factories | | | |
| | Basic course | 1 | 24 | 5 |
| | Refresher course | 1 | 4 | 3 |
| | Chemical Safety | 3 | 49 | 28 |

| | | | | |
|-----------|--|----|------|-----|
| | Construction Safety | 1 | 17 | 6 |
| C. | Management Personnel | | | |
| | Refresher course for Medical Officer | 1 | 23 | 17 |
| | Refresher course for Safety Officer | 1 | 11 | 10 |
| | Industrial Safety | 3 | 38 | 15 |
| | Industrial Hygiene | 3 | 12 | 8 |
| | Occupational Health | 4 | 79 | 38 |
| | Ergonomics | 3 | 31 | 11 |
| | Staff Training | 2 | 37 | 18 |
| | MAHC | 3 | 46 | 13 |
| | Construction Safety | 1 | 16 | 5 |
| | Environmental Pollution | 2 | 19 | 11 |
| | Hazardous Substances | 2 | 25 | 13 |
| D. | Supervisors | | | |
| | Industrial Safety | 4 | 128 | 77 |
| | Chemical Safety | 3 | 25 | 13 |
| | Safety & Health | 4 | 61 | 29 |
| | Dock Safety | 2 | 82 | 23 |
| | Environment | 1 | 6 | 4 |
| | Productivity | 5 | 175 | 22 |
| | Psychology | 3 | 45 | 10 |
| E. | Trade Union Leaders/Workers/Joint Participation | | | |
| | Industrial Safety | 4 | 99 | 11 |
| | Staff Training | 4 | 65 | 18 |
| | Incl. Psychology | 1 | 16 | 1 |
| | Total: | 71 | 1366 | 600 |

4.10.6 **Need Based In-Company Training Programmes:** On the request of managements, various disciplines of DGFASLI conduct in-company need based training programmes for the benefit of cross-section of personnel from respective units. Such programmes are designed after proper identification of needs of the defined target through preliminary discussions with the managements. The institute-wise details of the need-based in – company Training Programmes are given in **Annexure – III.**

Table 4.10 Need based In – company Training Programmes conducted during 2010

| Sl.No. | Level of Participants | Programmes | Participants | Organisations |
|--------|--|------------|--------------|---------------|
| 1. | Management Personnel | 16 | 553 | 16 |
| 2. | Supervisors | 6 | 156 | 6 |
| 3. | Trade Union Leader/Workers/Joint Participation | 8 | 221 | 8 |
| | Total | 30 | 930 | 30 |

4.10.7 **Short Duration Training Programmes:** DGFASLI also organized short duration (1 – 2 days) training programmes for the benefit of supervisors, workers, and workers representatives from factories. Such programmes are organized in the field of Safety, Health, Hygiene, Psychology, etc. The institute-wise details of Short Duration Training Programmes are given in **Annexure IV**.

Table 4.11 Short Duration Training Programmes conducted in 2010

| Sl. | Level of Participants | Programmes | Participants | Organisations |
|-----|--|------------|--------------|---------------|
| 1. | Management Personnel | 3 | 50 | 19 |
| 2. | Trade Union Leader/ Workers/ Joint Participation | 1 | 49 | 6 |
| 3. | Students of Educational Institutions | 7 | 214 | 7 |
| 4. | Other Enforcement officers | 1 | 4 | 1 |
| | Total: | 12 | 317 | 33 |

4.10.8 **Appreciation and Promotional Programmes:** Each of the Labour Institutes at Mumbai, Kolkata, Kanpur and Chennai has an Industrial Safety Health and Welfare Centre. There are also half day appreciations programmes conducted at various laboratories and divisions of the organization.

Table 4.12 Appreciation and Promotional Programmes conducted in 2010

| Sl. | Visits to | Programmes | Beneficiaries | Organisations |
|-----|------------------------------|------------|---------------|---------------|
| 1. | Appreciation Programmes | 267 | 5733 | 1376 |
| 2. | Safety Health Welfare Centre | 74 | 1887 | 97 |

4.11 **Technical Advice:**

Technical advice and guidance are provided to industries and port users on various aspects relating to control of hazards, prevention of accidents and occupational diseases, work environment, productivity etc.

4.12 **Testing of Personal Protective Equipment**

The respiratory and non-respiratory protective equipment testing laboratories at the Central Labour Institute, Mumbai undertake performance tests of canisters, masks, helmets, safety shoes, safety goggles, safety belts, welding glasses etc.

Table 4.13 Personnel Protective Equipment tested in 2010

| Sl.No. | Type of Equipment | No. of Equipments tested |
|--------|---------------------------|--------------------------|
| 1. | Non-Respiratory Equipment | 312 |
| 2. | Respiratory Equipment | 690 |
| | Total: | 1002 |

4.13 Approval of Flameproof Electrical Enclosures:

Use of flame/explosion – proof electrical enclosures is mandatory in hazardous units where flammable environment exists. The control on quality of such flameproof electrical enclosures is assured through test methods as stipulated in IS: 2148-2004. DGFASLI is the approving agency for these enclosures for the purposes of the Factories Act. The approvals are issued on the basis of inspection of units manufacturing these equipments and the test reports of recognized Testing Laboratories such as Central Power Research Institute and Central Institute of Mining and Fuel Research.

Table 4.14 Approval of Flameproof Electrical Enclosures during the year 2010

| | |
|-------------------|--|
| Approvals issued | 4 manufacturers for 21 flame-proof electrical enclosures |
| Inspection visits | 4 Manufacturing units. |

4.14 Talks:

The officers of the organization deliver talks on special topics in programmes organized by outside agencies to disseminate latest technical information with specific reference to national studies, unit level studies, surveys conducted. They are also publishing papers and articles and presenting them in important symposia, workshops and seminars.

Table 4.15 Institute –wise Talks delivered during 2010

| Sl.No. | Institute –wise | No. of Talks | Participants | Organisations |
|---------------|--------------------------------------|--------------|--------------|---------------|
| 1. | DGFASLI (HQ)* | 40 | 1497 | 339 |
| 2. | Central Labour Institute, Mumbai | 23 | 1538 | 120 |
| 3. | Regional Labour Institute, Kolkata | 3 | 59 | 3 |
| 4. | Regional Labour Institute, Chennai | 18 | 2413 | 212 |
| 5. | Regional Labour Institute, Kanpur | 2 | 38 | 24 |
| 6. | Regional Labour Institute, Faridabad | 0 | 0 | 0 |
| Total: | | 86 | 5545 | 698 |

* Comprising of Factory Advice Service & Dock Safety Divisions.

4.15 Presentation of Papers/Articles/Reports Publication of Articles/Papers:

The contribution of DGFASLI officers in preparation of papers and articles and presenting/publishing them in important symposia, workshops and seminars are highlighted as under.

Table 4.16 Article Presented in 2010

| Sl.No. | Paper/Article | Periodicals/Events | Date |
|--------|--|--|-----------|
| 1. | Role of Behavioral scientist: Challenges ahead | Indian Science Congress association. Annual at Thiruvananthapuram | 04-Jan-10 |
| 2. | Occupational Health Hazard and its prevention in the Haldia Industrial Prospective conducted by Indian Chamber of Commerce | One day Seminar on "Occupational Safety, Health & Environment Hazards management in Industries" at Hotel Retreat, Haldia, West Bengal. | 19-Feb-10 |
| 3. | "Silicosis a concern for silica dust Industries" | One day Workshop on Silicosis at Hotel Ambarish, Guwahati, Assam. | 25-Feb-10 |

| | | | |
|----|---|---|-----------|
| 4. | "Environmental Monitoring of Free Silica Dust" | One day Workshop on Silicosis at Hotel Ambarish, Guwahati, Assam. | 25-Feb-10 |
| 5. | Implementation of National policy on Safety, Health and Environment. | One day Seminar on "Safety & Productivity in Tea manufacturing Industry at Hotel Ambarish, Guwahati, Assam. | 26-Feb-10 |
| 6. | Occupational Health Hazards & its Prevention in Tea Industries | One day Seminar on "Safety & Productivity in Tea manufacturing Industry at Hotel Ambarish, Guwahati, Assam. | 26-Feb-10 |
| 7. | Better safety and health improves productivity | One day Seminar on "Safety & Productivity in Tea manufacturing Industry at Hotel Ambarish, Guwahati, Assam. | 26-Feb-10 |
| 8. | "Implementation of National Policy on Safety, health & Environment by OSH Stakeholders" | Seminar on "Prevention of OSH Hazards in Petroleum Industries" organised by DGFASLI in collaboration with Chief Inspector of Factories, Government of Assam at Hotel Agneedeep Continental, Guwahati, Assam | 11-Mar-10 |
| 9. | "Preparation of On-site and Off-site Emergency Plan" | Seminar on "Prevention of OSH Hazards in Petroleum Industries" organised by DGFASLI in collaboration with Chief Inspector of Factories, Government of Assam at Hotel Agneedeep Continental, Guwahati, Assam | 11-Mar-10 |
| 10 | Implementation of National Policy on Safety, Health and Environment at Work Place | Orissa State safety Conclave 2010 at Hotel May Fair Convention Centre, Bhubaneswar | 14-Sep-10 |
| 11 | Implementation Of National Policy on Safety, Health & Environment at Workplace | Seminar on "Issues on Occupational Safety & Health Hazards in Power Generation Industries" at Shillong by DGFASLI in collaboration with NEEPCO at NEEPCO Auditorium, Shillong, Meghalaya | 06-Oct-10 |
| 12 | On-site Emergency Plan in the Power Plants | Seminar on "Issues on Occupational Safety & Health Hazards in Power Generation Industries" at Shillong by DGFASLI in collaboration with NEEPCO at NEEPCO Auditorium, Shillong, Meghalaya | 06-Oct-10 |
| 13 | Risk Management - Implementation & Experience | Seminar on "Emerging Trends in Occupational Safety and Health Management" at RLI, Chennai | 29-Oct-10 |
| 14 | Implementation of National Policy on Safety, Health & Environment at Workplace | One day Seminar on 'Balancing Increased Productivity and Improved working Condition in Factories - a Review" at Pragna Bhavan, Hall No.3, Agartala, Tripura | 02-Nov-10 |
| 15 | Occupational Health Hazards and their Prevention | One day Seminar on 'Balancing Increased Productivity and Improved working Condition in Factories - a Review" at Pragna Bhavan, Hall No.3, Agartala, Tripura | 02-Nov-10 |
| 16 | Productivity and Safety in Manufacturing Industries | One day Seminar on 'Balancing Increased Productivity and Improved working Condition in Factories - a Review" at Pragna Bhavan, Hall No.3, Agartala, Tripura | 02-Nov-10 |
| 17 | Basic Principles of Safety and Accident Prevention - Fire Safety | Training Programme under Self Generation of Fund organized by Central Board of Workers Education, Ministry of Labour & Employment, | 27-Nov-10 |

| | | | |
|----|--|--|-----------|
| | | Govt. of India, Kolkata at UAL Bengal, Konark Nagar, Kharagpur | |
| 18 | Role of Work Environment Monitoring for improvement of Working Condition | Seminar on Sustainable Industrial Growth through Prevention of Occupational Safety, Health & Environment Hazards at Hotel City Residency, Durgapur | 03-Dec-10 |
| 19 | Prevention of Occupational Health Hazards saves lives of employees and economic losses in Industries | Seminar on Sustainable Industrial Growth through Prevention of Occupational Safety, Health & Environment Hazards at Hotel City Residency, Durgapur | 03-Dec-10 |
| 20 | SHE Management and Accident Prevention programme in Industry | One day training workshop on "Improvement of OSH Awareness in Paper Industries" at the auditorium of Nagaon Paper Mill, HPC, Jagiroad | 07-Dec-10 |
| 21 | Process Safety and Emergency Preparedness | Seminar on Sustainable Industrial Growth through Prevention of Occupational Safety, Health & Environment Hazards at Hotel City Residency, Durgapur | 07-Dec-10 |
| 22 | Common causes of accident and role of PPE in accident prevention | Seminar on Sustainable Industrial Growth through Prevention of Occupational Safety, Health & Environment Hazards at Hotel City Residency, Durgapur | 07-Dec-10 |
| 23 | Implementation of National Policy on Safety, Health and Environment at Workplace | One day Workshop on various facets of Industrial Safety & Health for representative of all big industries in the State of Chhattisgarh at Raipur | 16-Dec-10 |

4.16 CIS National Centre for India:

As a CIS National Centre for India CLI provides information and services on:

- Microfiche reference
- Awareness on current events
- Information access through CD-ROMs of ILO, WHO, etc.
- MSDS
- DISPERSION MODELS

4.17 INDOSHNEWS Newsletter:

In order to create Safety and Health awareness and to project the services offered by the organisation and its achievements DGFASLI brings out a Quarterly newsletter "INDOSHNEWS". This quarterly newsletter is intended to reach to the people round the globe and bring about awareness in matters related to safety and health, highlight important issues, latest developments, current events in the area of safety and health.

Table 4.17 Papers/Articles Published in 2010

| Sl.No. | Papers/ Articles Published | Periodical |
|--------|---|--------------------------|
| 1. | Health Hazards in Industries - An overview | INDOSHNEWS VOL. 14 No. 3 |
| 2. | Occupational Safety and Health Behaviour: An Indian Perspective | INDOSHNEWS VOL.14 |
| 3. | Role of Trade Unions in Occupational Safety & Health of Employees | INDOSHNEWS VOL.14 |
| 4. | DGFASLI's perspectives vis-à-vis Disaster Management | INDOSHNEWS VOL 15 No.1 |
| 5. | Recent trends of Accidents in docks and Ports | INDOSHNEWS VOL 15 No.1 |
| 6. | Occupational Health Study & Environmental Monitoring in Some Stone Breaking Units | INDOSHNEWS VOL. 15 No. 2 |
| 7. | Occupational Safety & Health - Challenges in India & Solutions | INDOSHNEWS VOL. 15 No. 2 |

4.18 DGFASLI website:

The DGFASLI website www.dgfasli.nic.in is a source of information on various safety and health related matters. The website contains database on abstract on OS&H studies, reports; information on advisory services rendered by DGFASLI in the area of testing of respiratory and non-respiratory personal protective equipment, flame proof equipment approval, material safety data sheets and National Referral Diagnostic Centre, etc. The INDOSHNEWS newsletters of DGFASLI are also available on the website. The training programme calendar for all the labour institutes, announcement on National Safety Awards & Vishwakarma Rashtriya Puraskar awards, AFIH course, Diploma Course in Industrial Safety along with the application forms are available on the website. The website enables users to access other useful websites related to safety and health and get the national directory of organisation-profile of agencies engaged in the field of safety and health. The website also contains the text of the Factories Act, 1948 and the Model Rules framed there under and also the Dock Workers (Safety, Health and Welfare) Act, 1986 etc. Statistics of Factories, Docks, List of Chief Inspectors of Factories, List of Dock Safety Inspectorates are also available.

5 Safety Awards

To appreciate the contribution made by the factories and docks towards producing quality goods and providing efficient services in safe and healthy conditions the following awards are being given.

5.1 Prime Minister's Shram Awards (PMSA):

The Prime Minister's Shram Awards (PMSA) were instituted in 1985, for the workers (as defined in Industrial Disputes Act, 1947) in recognition of their outstanding contributions in organizations both in public and private sector and who have distinguished record of performance, devotion to duty of a high order, specific contribution in the field of productivity, proven innovative abilities, presence of mind and exceptional courage and also to the workmen who have made supreme sacrifice of laying down their lives in the conscientious discharge of their duties.

It has been decided from the year 2004 onwards that the private sectors shall also be included within the ambit of Prime Minister's Shram Awards and the workers in the private sector units employing 500 or more workers and engaged in manufacturing and productive processes will be eligible to apply for these awards. The number of awards has been increased from 17 to 33. The awards, in order of sequence are Shram Ratna, Shram Bhushan, Shram Vir/Veerangana and Shram Shri/Devi. The recognition consists of a Sanad and cash award of Rs. Two lakh (1 award), Rs. One lakh (4 awards), Rs. 60,000 (12 awards) and Rs. 40,000 (16 awards) respectively.

Vishwakarma Rashtriya Puraskar & National Safety Awards:

The DGFASLI on behalf of the Ministry of Labour and Employment has been implementing the Vishwakarma Rashtriya Puraskar (VRP) (earlier known as Shram Vir National Awards) and the National Safety Awards scheme since 1965. These schemes were modified in 1971, 1978 and again in 2007. The schemes presently in operation are as follow:

- (i) **Vishwakarma Rashtriya Puraskar:** It is designed to give recognition at the national level to outstanding suggestions resulting in (i) higher productivity (ii) improvement in safety and working conditions (iii) savings in foreign exchange (import substitution as well as quality and safety of products), (iv) improvement in overall efficiency of the establishments. It covers workers employed in factories and docks. The prizes are grouped in three classes i.e. CLASS (A) – 5, CASH AWARD OF RS.75,000/- EACH, CLASS (B) - 8, CASH AWARD OF RS.50,000/- EACH AND CLASS(C) – 15, CASH AWARD OF RS.25,000/- EACH. These awards are applicable to the workers of Industrial establishments covered under the Factories Act, 1948, the employees covered under the Dock Worker (Safety, Health and Welfare) Act 1986, the Building and Other Construction Workers (Regulation of Employment and Conditions of Service) Act, 1996 and Installations under Atomic Energy Regulatory Board (AERB).
- (ii) **National Safety Awards:** National Safety Awards are given in recognition of outstanding safety performance on the part of the industrial establishments covered under the Factories Act 1948, the employers covered under the Dock Worker (Safety, Health and Welfare) Act 1986, the Building and Other Construction Workers (Regulation of Employment and Conditions of Service) Act, 1996 and Installations under Atomic Energy Regulatory Board (AERB). Shields



Shri.Mallikarjun Kharge Hon'ble Minister for Labour & Employment, inaugurating and distributing the Vishwakarma Rashtriya Puraskar and National Safety Awards for the Performance year 2008, at Vigyan Bhavan, New Delhi on 27.09.2010

6 Human Resource Development

The officers of the Organisation are deputed to the programmes organised by various agencies within the country and abroad, for their exposure to the latest technical developments that are taking place in the field of Industrial Safety and Health. The details of such participation during the year are given below:

Table: 6.1 International Programmes attended by officers of DGFASLI in 2010

| Sl.No. | International Programmes | Place | From | To | No. of officers trained |
|--------|---|--|----------|----------|-------------------------|
| 1. | Occupational Safety and Health Inspection Course for Asia Pacific Countries | Singapore | 22/02/10 | 26/02/10 | 1 |
| 2. | An officer of FAS Division visited Incheon, Republic of Korea, to participate in ILO's training programme to promote National Policy Framework on Occupational Safety and Health held at Korean Occupational Safety and Health Agency (KOSHA) | Republic of Korea | 21/06/10 | 30/06/10 | 1 |
| 3. | 48th Annual meeting of the ILO-CIS and the 5th China International Forum for work Safety held at Beijing, China | Beijing, China | 30/08/10 | 02/09/10 | 1 |
| 4. | ILO-ITC Programme on Building Modern and Effective Labour Inspection System. | Turin ITALY, Lisbon, Portugal and Madrid Spain | 30/08/10 | 10/09/10 | 2 |
| 5. | Inter-Agency Awareness-raising Workshop on the Sound Management of Industrial Chemicals with Special Emphasis on Asbestos for the Asia Pacific Region organised by ILO & WHO | Bangkok, Thailand | 31/08/10 | 03/09/10 | 1 |
| 6. | ILO-ITC Programme on Occupational Safety and Health Management in the Construction Sector. | Turin ITALY | 13/09/10 | 24/09/10 | 1 |
| 7. | The 1st International Conference on Accident Prevention (ICAP-2010) . | Busan, South Korea | 17/10/10 | 24/10/10 | 1 |
| 8. | International Seminar organized by ILO on "Good practices on labour inspection " | Brazil | 06/12/10 | 09/12/10 | 1 |

Table: 6.2 National Programmes attended by officers of DGFASLI in 2010

| Sl. No. | National Programmes | Place | From | To | No. of officers trained |
|---------|---|--|----------|----------|-------------------------|
| 1 | "Mainstreaming Disaster Risk Reduction in Development" | National Institute of Disaster Management, New Delhi | 07/01/10 | 08/01/10 | 1 |
| 2 | National orientation workshop for nodal officers of Ministries on workplace policy on HIV/AIDS | India Habitat Centre, New Delhi (Organised by ILO and MOL) | 05/02/10 | 05/02/10 | 1 |
| 3 | Workshop-Discussion & Development of training strategy for Labour Inspection | Noida | 09/03/10 | 10/03/10 | 1 |
| 4 | Conference of HODs of Field Officers under Ministry of Labour & Employment located in the southern region | Bangalore | 05/04/10 | 05/04/10 | 1 |
| 5 | Statutory provisions for construction safety in India | Cidadede Goa | 24/05/10 | 26/05/10 | 1 |
| 6 | PHAST Introduction Training | DNV, Hyderabad | 02/08/10 | 03/08/10 | 1 |
| 7 | ILO-NLI Training of trainers on Labour Inspection. | N.L.I. New Delhi | 03/08/10 | 14/08/10 | 2 |
| 8 | Workshop on Layer of Protection Analysis (LOPA) | Hotel Raintree, Anna Salai, Chennai | 15/12/10 | 16/12/10 | 1 |

7 Statistics on Occupational Safety and Health in Factories

7.1 The statistics of factories is collected and compiled by the **Labour Bureau** on the basis of the Annual Returns/Reports in respect of the Factories Act 1948, furnished by various States and Union Territories. Under the Factories Act, 1948, injuries resulting from industrial accidents, by reasons of which the person injured is prevented from attending to work for a period of 48 hours or more immediately following the accident, are recorded. The important indices on injuries are Frequency Rate (FR) and Incidence Rate (IR). The Frequency Rate is defined as number of total injuries per 1, 00,000 man-days worked. The Incidence Rate is the number of injuries per 1000 workers employed in the factories.

The information relating to occupational injuries in factories given in this chapter in table 7.1 to 7.7 and Chart 7.1 to 7.2 is based on the statistics provided by Labour Bureau up to the year 2007.

Table: 7.1 Statistics of Employment, Industrial Injuries, etc. in Factories

| Year | No. of Working Factories | Estimated Average daily Employment (in thousands) | Industrial Injuries | | Frequency Rate of injuries per lakh Man-days worked | | Incidence Rate of injuries per thousand Workers Employed in Factories Submitting Return | |
|---------|--------------------------|---|---------------------|-------|---|-------|---|-------|
| | | | Fatal | Total | Fatal | Total | Fatal | Total |
| 1 | 2 | 3 | 4 | 5 | 6 | 7 | 8 | 9 |
| 2003 | 111895 | 4927 | 525 | 16432 | 0.08 | 2.50 | 0.11 | 3.33 |
| 2004 | 158991 | 6802 | 562 | 15020 | 0.05 | 1.33 | 0.08 | 2.21 |
| 2005 | 175341 | 7180 | 613 | 14776 | 0.05 | 1.27 | 0.09 | 2.06 |
| 2006 | 196097 | 8269 | 1068 | 19912 | 0.08 | 1.42 | 0.13 | 2.41 |
| 2007(P) | 163299 | 8015 | 821 | 15290 | 0.09 | 1.73 | 0.10 | 1.91 |

Note: Data is based on the returns received under Factories Act, 1948 from States/UTs.

P : Provisional

Source: Data received from Labour Bureau through correspondence dated 25.1.2011

Limitations of the data as stated by Labour Bureau Chandigarh:

1 Figures for 2005 excludes A & N, Arunachal Pradesh, Bihar, Chhattisgarh, Dadra & Nagar Haveli, Delhi, Gujarat, Himachal Pradesh, Jammu & Kashmir, Lakshadweep, Manipur, Mizoram, Nagaland, Pondicherry, Sikkim, Uttar Pradesh, Uttaranchal and West Bengal,

2 Figures for 2006 excludes A & N, Arunachal Pradesh, Bihar, Chhattisgarh, Dadra & Nagar Haveli, Delhi, Gujarat, Himachal Pradesh, Jammu & Kashmir, Lakshadweep, Manipur, Mizoram, Nagaland, Pondicherry, Sikkim, Uttar Pradesh, Uttaranchal and West Bengal,

3 Figures for 2007 (P) excludes A & N, Arunachal Pradesh, Bihar, Chhattisgarh, Dadra & Nagar Haveli, Delhi, Gujarat, Himachal Pradesh, Jammu & Kashmir, Lakshadweep, Manipur, Mizoram, Nagaland, Pondicherry, Sikkim, Uttar Pradesh, Uttaranchal and West Bengal,

The Number of injuries has been given on the basis of notices of accidents whereas the rates have been worked out on the basis of Annual Return.

Table 7.2 State-Wise Total Number of Industrial Injuries in Factories

| States/Union Territory | 2003 | 2004 | 2005 | 2006 | 2007(P) |
|------------------------|-----------|----------|-----------|-----------|-----------|
| Andaman & Nicobar | 53(-) | NA | NA | NA | 38(-) |
| Andhra Pradesh | 1976(100) | 1911(91) | 1822(139) | 1569(177) | 1755(162) |
| Arunachal Pradesh | NA | NA | NA | NA | NA |
| Assam | 65(6) | 78(12) | 51(5) | 55(5) | 76(11) |
| Bihar | NA | NA | 42(7) | NA | 162(11) |
| Chandigarh | 81(11) | 3(-) | 2(1) | 12(-) | 6(2) |
| Chhattisgarh | NA | NA | NA | NA | NA |
| Dadra Nagar Haveli | NA | NA | NA | NA | NA |
| Delhi | NA | NA | NA | NA | NA |
| Goa | 145(3) | 166(12) | 203(16) | 204(8) | 191(10) |
| Gujarat | NA | NA | NA | 5002(160) | NA |
| Haryana | 181(25) | 198(64) | 272(38) | 203(27) | 145(43) |
| Himachal Pradesh | NA | NA | NA | NA | NA |
| Jammu Kashmir | NA | NA | NA | NA | NA |

| | | | | | |
|----------------|-------------------|-------------------|-------------------|--------------------|-------------------|
| Jharkhand | NA | NA | 218(21) | 270(27) | 126(21) |
| Karnataka | 2013(50) | 1262(45) | 1425(37) | 2805(25) | 2151(23) |
| Kerala | NA | 305(9) | 971(18) | 631(13) | NA |
| Lakshadweep | NA | NA | NA | NA | NA |
| Madhya Pradesh | 2065(48) | 1525(29) | 1188(40) | 1168(35) | 1623(53) |
| Maharashtra | 6416(159) | 5479(161) | 4680(143) | 4547(403) | 7216(342) |
| Manipur | NA | NA | NA | NA | NA |
| Meghalaya | NA | 9(-) | 1(-) | NA | -(-) |
| Mizoram | NA | NA | NA | NA | NA |
| Nagaland | NA | NA | NA | NA | NA |
| Orissa | 700(49) | 694(40) | 615(37) | 553(74) | 550(81) |
| Pondicherry | 581(8) | NA | NA | NA | NA |
| Punjab | 404(7) | 199(7) | 331(7) | 408(4) | NA |
| Rajasthan | 1748(58) | 1286(52) | 1326(52) | 1190(61) | 1205(60) |
| Sikkim | NA | NA | NA | NA | NA |
| Tamil Nadu | NA | 1928(40) | 1624(50) | 1290(49) | NA |
| Tripura | 4(1) | 3(-) | 5(2) | 5(-) | 3(1) |
| Uttar Pradesh | NA | NA | NA | NA | NA |
| Uttaranchal | NA | NA | NA | NA | NA |
| West Bengal | NA | NA | NA | NA | 43(1) |
| Total: | 16432(525) | 15020(562) | 14734(606) | 19912(1068) | 15290(821) |

Note: (i) NA = Not Available,

(ii) - = Nil, (iii) Figures in brackets pertain to "Fatalities" and are included in the total,

(iii) P = Provisional. (iv) **For limitations of data refer note of Table 7.1**

Source: Data received from Labour Bureau through correspondence dated 25.1.2011.

Table: 7.3 State-wise and year-wise Frequency Rates of Industrial Injuries in Factories

| State/UTs | 2003 | 2004 | 2005 | 2006 | 2007(P) |
|-------------------|-------------|------------|------------|------------|------------|
| Andaman & Nicobar | 4.17(-) | NA | NA | NA | 2.85(-) |
| Andhra Pradesh | 1.93 (0.10) | 1.73(0.08) | 1.61(0.12) | 1.34(0.15) | 1.40(0.13) |
| Arunachal Pradesh | NA | NA | NA | NA | NA |
| Assam | 1.61(0.06) | 0.78(0.12) | 0.46(0.04) | 0.56(0.05) | 0.86(0.12) |
| Bihar | NA | NA | 1.28(0.21) | NA | 1.41(0.30) |
| Chandigarh | 2.15(0.29) | 0.09(-) | 0.07(0.03) | 0.44(-) | 0.23(0.08) |
| Chhattisgarh | NA | NA | NA | NA | NA |
| Daman & Diu | NA | NA | NA | NA | NA |
| Delhi | NA | NA | NA | NA | NA |
| Goa | 1.38 (0.03) | 1.51(0.11) | 2.03(0.16) | 1.69(0.07) | 1.37(0.07) |
| Gujarat | NA | NA | NA | 5.78(0.18) | NA |
| Haryana | 0.52 (0.07) | 0.32(0.10) | 0.43(0.06) | 0.22(0.03) | 0.32(0.09) |
| Himachal Pradesh | NA | NA | NA | NA | NA |
| Jammu & Kashmir | NA | NA | NA | NA | NA |
| Jharkhand | NA | NA | 0.26(0.03) | 0.32(0.03) | 0.20(0.03) |
| Karnataka | 2.02(0.05) | 104(0.04) | 1.18(0.03) | 1.82(0.02) | 1.53(0.02) |
| Kerala | NA | 0.90(0.03) | 3.67(0.07) | 1.40(0.03) | NA |

| | | | | | |
|----------------|-------------------|------------------|-------------------|-------------------|-------------------|
| Lakshadweep | NA | NA | NA | NA | NA |
| Madhya Pradesh | 3.90(0.09) | 1.51(0.03) | 3.27(0.11) | 1.20(0.04) | 4.65(0.15) |
| Maharashtra | 2.75(0.07) | 2.50(0.07) | 2.04(0.06) | 2.10(0.19) | 3.21(0.15) |
| Manipur | NA | NA | NA | NA | NA |
| Meghalaya | NA | 1.49(-) | 0.06(0.00) | NA | -(-) |
| Mizoram | NA | NA | NA | NA | NA |
| Nagaland | NA | NA | NA | NA | NA |
| Orissa | 2.16 (0.15) | 2.06(0.12) | 1.76(0.11) | 1.48(0.20) | 1.26(0.18) |
| Pondicherry | 255.90(3.52) | NA | NA | NA | NA |
| Punjab | 1.14 (0.02) | 0.61(0.02) | 1.15(0.02) | 1.32(0.01) | NA |
| Rajasthan | 4.63 (0.15) | 3.21(0.13) | 3.26(0.13) | 2.54(0.13) | 2.38(0.12) |
| Sikkim | NA | NA | NA | NA | NA |
| Tamil Nadu | NA | 0.55(0.01) | 0.45(0.01) | 0.35(0.01) | NA |
| Tripura | 0.58 (0.14) | 0.49(-) | 0.19(0.08) | 0.14(-) | 0.13(0.04) |
| Uttar Pradesh | NA | NA | NA | NA | NA |
| Uttaranchal | NA | NA | NA | NA | NA |
| West Bengal | NA | NA | NA | NA | 0.46(0.01) |
| Total: | 2.50(0.08) | 1.33(0.5) | 1.27(0.05) | 1.42(0.08) | 1.73(0.09) |

Note: (i) **F.R.** = Frequency Rate per lakh man-days worked (ii) **NA** = Not Available, (iii) **(-)** = Nil or Negligible, (iv) Figures in bracket pertain to "Fatalities" and are included in the total, (v) **P** = Provisional. For limitations of the data please refer note under table 7.1 **Source:** Data received from Labour Bureau through correspondence dated 25.1.2011.

Table: 7.4 State-wise and year-wise Incidence Rates of Industrial Injuries

| State/UTs | 2003 | 2004 | 2005 | 2006 | 2007(P) |
|-------------------|-------------|------------|------------|------------|------------|
| Andaman & Nicobar | 10.14 (-) | NA | NA | NA | 7.39(-) |
| Andhra Pradesh | 2.76 (0.14) | 2.50(0.12) | 2.36(0.18) | 1.98(0.22) | 2.11(0.19) |
| Arunachal Pradesh | NA | NA | NA | NA | NA |
| Assam | 1.69 (0.06) | 0.79(0.12) | 0.48(0.05) | 0.48(0.04) | 0.63(0.09) |
| Bihar | NA | NA | 0.47(0.08) | NA | 1.56(0.11) |
| Chandigarh | 5.59(0.76) | 0.22(-) | 0.16(0.08) | 0.92(-) | 0.50(0.17) |
| Chhattisgarh | NA | NA | NA | NA | NA |
| Daman & Diu | NA | NA | NA | NA | NA |
| Delhi | NA | NA | NA | NA | NA |
| Goa | 3.22 (0.07) | 3.91(0.28) | 4.54(0.36) | 4.19(0.16) | 3.63(0.19) |
| Gujarat | NA | NA | NA | 4.95(0.16) | NA |
| Haryana | 0.50 (0.07) | 0.36(0.11) | 0.47(0.07) | 0.32(0.04) | 0.21(0.06) |
| Himachal Pradesh | NA | NA | NA | NA | NA |
| Jammu & Kashmir | NA | NA | NA | NA | NA |
| Jharkhand | NA | NA | 0.78(0.07) | 0.92(0.09) | 0.42(0.07) |
| Karnataka | 2.01(0.05) | 1.34(0.05) | 1.53(0.04) | 3.06(0.03) | 2.04(0.02) |
| Kerala | NA | 0.75(0.02) | 5.54(0.10) | 3.84(0.08) | NA |
| Lakshadweep | NA | NA | NA | NA | NA |
| Madhya Pradesh | 4.96 (0.12) | 3.22(0.06) | 2.58(0.09) | 2.68(0.08) | 3.62(0.12) |
| Maharashtra | 5.28(0.13) | 4.44(0.13) | 3.60(0.11) | 3.43(0.30) | 5.37(0.25) |

| | | | | | |
|---------------|-------------------|-------------------|-------------------|--------------------|-------------------|
| Manipur | NA | NA | NA | NA | NA |
| Meghalaya | NA | 2.01(-) | 0.23(0.00) | NA | -(-) |
| Mizoram | NA | NA | NA | NA | NA |
| Nagaland | NA | NA | NA | NA | NA |
| Orissa | 5.34 (0.37) | 5.32(0.31) | 4.41(0.27) | 3.68(0.49) | 3.34(0.49) |
| Pondicherry | 10.51(0.14) | NA | NA | NA | NA |
| Punjab | 0.88 (0.02) | 0.41(0.01) | 0.63(0.01) | 0.74(0.01) | NA |
| Rajasthan | 4.68 (0.16) | 3.33(0.13) | 3.33(0.13) | 3.02(0.16) | 2.58(0.13) |
| Sikkim | NA | NA | NA | NA | NA |
| Tamil Nadu | NA | 1.50(0.03) | 1.22(0.04) | 0.94(0.04) | NA |
| Tripura | 0.12 (0.03) | 0.09(-) | 0.15(0.06) | 0.15(-) | 0.07(0.02) |
| Uttar Pradesh | NA | NA | NA | NA | NA |
| Uttaranchal | NA | NA | NA | NA | NA |
| West Bengal | NA | NA | NA | NA | 0.05(0.00) |
| Total: | 3.33(0.11) | 2.21(0.08) | 2.06(0.09) | 2.41(0.130) | 1.91(0.10) |

Note: (i) I.R. = Incidence Rate per 1000 workers employed, (ii) NA = Not Available, (iii) (-) = Nil or Negligible, (iv) Figures in bracket pertain to "Fatalities" and are included in the total, (vii) P = Provisional. For limitations of the data please refer note under table 7.1

Source: Data received from Labour Bureau through correspondence dated 25.1.2011

Table 7.5 Industrial Injuries and their Incidence Rate (IR) per Thousand Workers Employed by Important Industries

| Sl. No. | Industry | NIC Code | 2003 | | 2004 | | 2005 | | 2006 | | 2007(P) | |
|---|---|----------|------------------------|------------------------|------------------------|------------------------|------------------------|------------------------|------------------------|------------------------|------------------------|------------------------|
| | | | Total Injuries | IR | Total Injuries | IR | Total Injuries | IR | Total Injuries | IR | Total Injuries | IR |
| 1 | 2 | 3 | 4 | 5 | 6 | 7 | 8 | 9 | 10 | 11 | 12 | 13 |
| 1. | All Textiles | 17,18 | 5332 (39) | 6.53 (0.05) | 4172 (66) | 3.22 (0.05) | 3862 (36) | 2.74 (0.03) | 5808 (68) | 3.57 (0.04) | 3582 (50) | 2.52 (0.04) |
| 2. | Mfg of Paper & paper products & printing, publishing & allied products | 21,22 | 976 (23) | 4.92 (0.12) | 617 (19) | 2.40 (0.07) | 493 (17) | 2.02 (0.07) | 510 (25) | 1.80 (0.09) | 496 (26) | 1.76 (0.09) |
| 3. | Mfg of Chemicals & Chemical products (Except Petroleum and coal products) | 24 | 944 (78) | 2.50 (0.21) | 982 (54) | 1.67 (0.09) | 1159 (91) | 1.91 (0.15) | 1560 (155) | 1.97 (0.20) | 991 (68) | 1.87 (0.13) |
| 4. | Manufacture of Non-metallic mineral products | 26 | 799 (46) | 2.50 (0.14) | 821 (52) | 1.87 (0.12) | 742 (47) | 1.51 (0.10) | 896 (73) | 1.63 (0.13) | 1038 (68) | 1.70 (0.11) |
| 5. | Basic metal and alloys Industries | 27 | 1370 (79) | 3.97 (0.23) | 1130 (78) | 2.84 (0.20) | 1543 (102) | 3.06 (0.20) | 1842 (166) | 3.16 (0.28) | 1822 (179) | 2.61 (0.26) |
| 6. | Mfg of metal products & Parts (except machinery & transport equipment) | 28 | 659 (16) | 2.32 (0.06) | 723 (37) | 1.85 (0.09) | 688 (36) | 1.91 (0.10) | 1151 (38) | 2.64 (0.09) | 1209 (21) | 2.55 (0.04) |
| 7. | Manufacture of machinery, machine tools & parts (except electrical machinery) | 29.30 | 993 (19) | 3.26 (0.06) | 923 (25) | 2.49 (0.07) | 953 (17) | 2.21 (0.04) | 1522 (59) | 3.26 (0.13) | 999 (27) | 1.86 (0.05) |
| 8. | Manufacture of transport equipment and parts | 34.35 | 1184 (12) | 3.93 (0.04) | 1399 (36) | 3.57 (0.09) | 1250 (38) | 3.00 (0.09) | 1312 (80) | 5.42 (0.33) | 1043 (15) | 2.29 (0.03) |
| 9. | Electricity, Gas and Steam | 40 | 274 (31) | 3.17 (0.36) | 699 (32) | 6.27 (0.29) | 520 (32) | 4.10 (0.25) | 392 (23) | 2.79 (0.16) | 119 (12) | 0.70 (0.07) |
| Total of (Sl. No. 1 to 9 Industries) : | | | 12531 (343) | 4.13 (0.11) | 11466 (399) | 2.70 (0.09) | 11210 (416) | 2.44 (0.09) | 13767 (609) | 2.69 (0.13) | 11299 (466) | 2.18 (0.09) |
| * Total of All Industries : | | | 16432 (525) | 3.33 (0.11) | 15020 (562) | 2.21 (0.08) | 14776 (613) | 2.06 (0.09) | 9912 (1068) | 2.41 (0.13) | 15290 (821) | 1.91 (0.10) |

Note : (i) Figures in brackets indicate "Fatalities" and are included in the Total, (ii) P = Provisional

(iii)* The figures for All Industries include the figures of other industries apart from above Industries shown

For Limitations of data refer footnote of table 7.1

Source: Data received from Labour Bureau through correspondence dated 25.1.2011.

Table 7.6 Frequency Rate of Total Injuries by Important Industries

| Sl. No. | Industry | NIC Code | 2005 | 2006 | 2007(P) |
|--|--|----------|-------------|-------------|-------------|
| 1. | All Textiles | 17,18 | 1.87 | 2.11 | 2.48 |
| 2. | Manufacture of Paper & paper products & printing, publishing & allied products | 21,22 | 1.18 | 1.04 | 1.64 |
| 3. | Manufacture of Chemicals & Chemical products (Except products of Petroleum and coal) | 24 | 0.96 | 1.20 | 1.34 |
| 4. | Manufacture of Non-metallic mineral products | 26 | 1.25 | 1.33 | 2.11 |
| 5. | Basic metal and alloys Industries | 27 | 1.47 | 1.49 | 1.73 |
| 6. | Manufacture of metal products & Parts(except machinery & transport equipment) | 28 | 1.05 | 1.68 | 2.38 |
| 7. | Manufacture of machinery, machine tools & parts (except electrical machinery) | 29,30 | 1.37 | 2.09 | 1.80 |
| 8. | Manufacture of transport equipment and parts | 34,35 | 1.22 | 1.25 | 1.52 |
| 9. | Electricity, Gas and Steam | 40 | 1.91 | 1.32 | 0.51 |
| Total of (Sl. No. 1 to 9 Industries) : | | | 1.42 | 1.50 | 1.88 |
| * Total of All Industries : | | | 1.27 | 1.42 | 1.81 |

Note : (i) Figures in brackets indicate "Fatalities" and are included in the Total,

(ii) P = Provisional

(iii)* The figures for All Industries include the figures of other industries apart from above Industries shown

For Limitations of data refer footnote of table 7.1

Source: Data received from Labour Bureau through correspondence dated 25.1.2011.

Table 7.7 Industrial injuries in Factories by causes

| Causation | 2005 | | 2006 | | 2007(P) | |
|---|--------------|------------|--------------|------------|--------------|------------|
| | Total | Fatal | Total | Fatal | Total | Fatal |
| Prime movers | 39 | 5 | 192 | 6 | 47 | 2 |
| Machinery moved by Mechanical Power | 2168 | 68 | 2459 | 135 | 691 | 61 |
| Machinery not moved by Mechanical Power | 314 | 2 | 249 | 7 | 110 | 8 |
| Transport whether moved by Power or not | 300 | 23 | 263 | 13 | 72 | 26 |
| Electricity | 226 | 42 | 262 | 57 | 111 | 40 |
| Explosions | 91 | 31 | 71 | 23 | 28 | 11 |
| Fires | 202 | 37 | 134 | 39 | 84 | 12 |
| Gassing | 68 | 8 | 86 | 11 | 24 | 7 |
| Molten Metals & other Hot or Corrosive Substances | 354 | 26 | 385 | 26 | 188 | 22 |
| Hand Tools | 596 | 6 | 504 | 0 | 478 | 0 |
| Falling Bodies | 1139 | 45 | 1345 | 43 | 1234 | 50 |
| Persons Falling | 1179 | 112 | 2035 | 376 | 1579 | 131 |
| Stepping on or Striking against Objects | 1300 | 10 | 1369 | 18 | 894 | 25 |
| Handling Goods or Articles | 1516 | 20 | 2091 | 18 | 956 | 19 |
| Others | 3209 | 63 | 3616 | 121 | 6455 | 340 |
| Total | 12701 | 498 | 15061 | 893 | 12951 | 754 |

Note : (i) P = Provisional

(ii) For Limitations of data refer footnote of table 7.1

Source: Data received from Labour Bureau through correspondence dated 25.1.2011

Chart 7.1

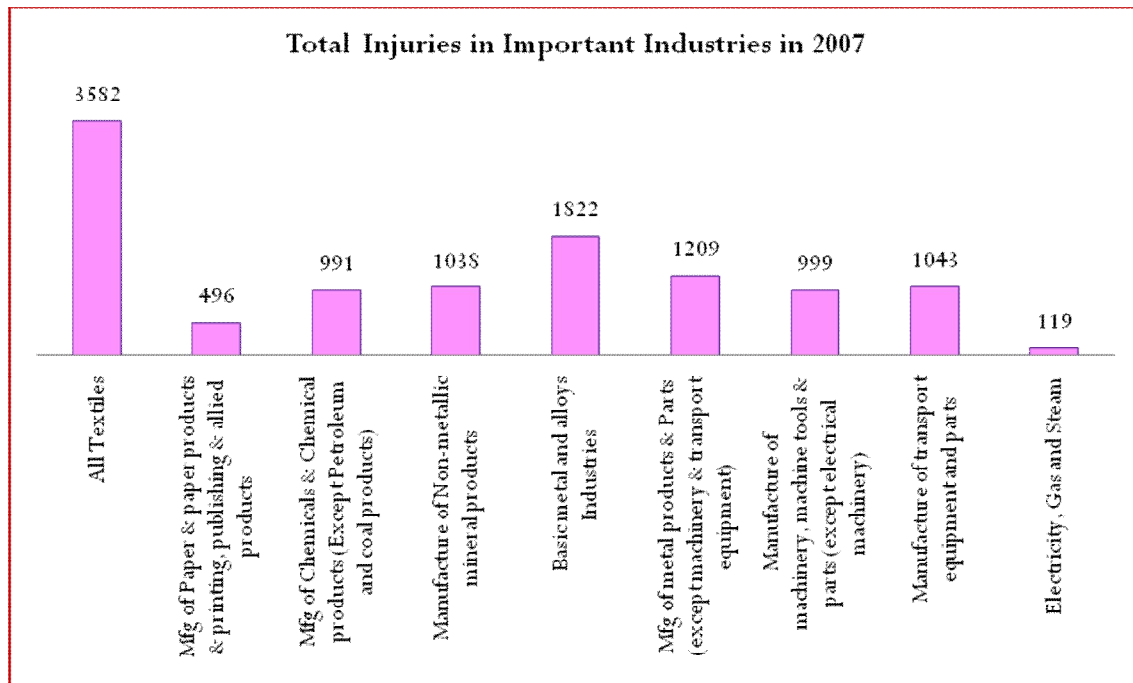
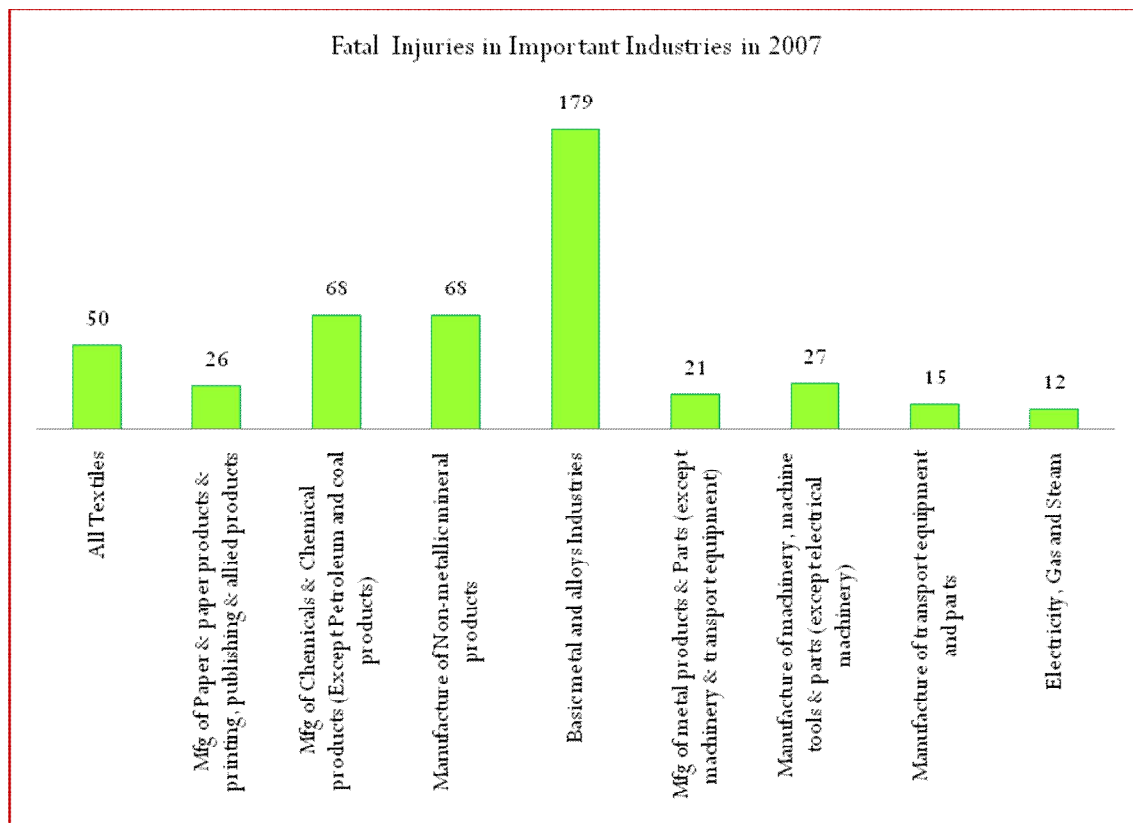


Chart 7.2



Source: Labour Bureau, Chandigarh.

For Limitations of data refer footnote of table 7.1

8 Statistics on Status of compliance with statutory provisions based on data collected by DGFASLI

8.1 The DGFASLI receives information relating to factories covered under the provisions of the Factories Act, 1948 from States and Union Territories from time to time. This information is mainly collected through FAS Forms as well as through correspondence as and when required. It is entered in the data bank specially created at DGFASLI for disseminating any specific information as and when necessary. This information can be used for knowing the state-wise status of safety and health as well as compliance level with statutory standards in factories. The information can be used for estimation of various trends. It is emphasized here, that for ascertaining the correctness or the updated information given in the following pages/tables, the State Governments/Union Territory Administration concerned may be contacted.

Statistics of Factories at a Glance: 2009

| | |
|--------------------------------|------------|
| Registered Factories | 324,761 |
| Working Factories | 270,294 |
| Employment | |
| Total | 13,100,129 |
| Men | 11,340,366 |
| Women | 1,759,763 |
| Safety Officers | 2,642 |
| Welfare Officers | 3,096 |
| Factory Med. Officers | 6,809 |
| Safety Policy | 14,681 |
| Safety Committees | 12,995 |
| MAH Factories | 1,920 |
| On-site Emergency Plans | 1,920 |
| Canteens | 6,351 |
| Creches | 5,326 |
| Total Injuries | 33,093 |
| Fatal Injuries | 1,509 |

Table 8.1 Fatal and Non-fatal Injuries in Factories (P)

| States/ Territories | Union | 2008 | | 2009 | | 2010 | |
|------------------------------------|-------|-------------------|--------------------------|-------------------|--------------------------|-------------------|--------------------------|
| | | Fatal Injuries | Non Fatal Injuries | Fatal Injuries | Non Fatal Injuries | Fatal Injuries | Non Fatal Injuries |
| Andaman & Nicobar Islands | | 0 | 66 | 0 | 49 | .. | .. |
| Andhra Pradesh | | 162 | 1525 | 165 | 927 | 188 | 923 |
| Assam | | 15 | 65 | 4 | 48 | 6 | 46 |
| Bihar | | 6 | 48 | 14 | 34 | 1 | 15 |
| Chandigarh | | 2 | 7 | 0 | 8 | 0 | 2 |
| Chhattisgarh | | 103 | 343 | 114 | 342 | 84 | 341 |
| Daman & Diu & Dadra & Nagar Haveli | | 12 | 44 | 14 | 13 | 14 | 31 |
| National Capital of Delhi | | 7 | 54 | 14 | 26 | 15 | 39 |
| Goa | | 7 | 161 | 10 | 134 | 12 | 97 |
| Gujarat | | 195 | 2725 | 173 | 2984 | 221 | 2430 |
| Haryana | | 45 | 128 | 51 | 104 | 38 | 51 |
| Himachal Pradesh | | 6 | 5 | 19 | 32 | 5 | 11 |
| Jammu & Kashmir | | 4 | 247 | 2 | 52 | Nil | 99 |
| Jharkhand | | 23 | 214 | 36 | 180 | 43 | 149 |
| Karnataka | | 91 | 1052 | 80 | 927 | 92 | 779 |
| Kerala | | 15 | 158 | 41 | 106 | 7 | 79 |
| Madhya Pradesh | | 41 | 1093 | 51 | 1173 | 68 | 848 |
| Maharashtra | | 218 | 3094 | 217 | 2911 | 225 | 2540 |
| Manipur | | .. | .. | .. | .. | .. | .. |
| Meghalaya | | 0 | 6 | 0 | 14 | 2 | 12 |
| Nagaland | | 0 | 0 | 0 | 0 | 0 | 0 |
| Orissa | | 81 | 483 | 122 | 426 | 103 | 457 |
| Pondicherry | | 1 | 235 | 8 | 102 | 10 | 46 |
| Punjab | | 39 | 135 | 35 | 248 | 14 | 212 |
| Rajasthan | | 49 | 607 | 56 | 699 | 65 | 534 |
| Tamil Nadu | | 67 | 1252 | 137 | 826 | 75 | 860 |
| Tripura | | 0 | 1 | 0 | 4 | 1 | 5 |
| Uttar Pradesh | | 87 | 142 | 61 | 235 | 64 | 152 |
| Uttaranchal | | 15 | 65 | 20 | 33 | 9 | 24 |
| West Bengal | | 78 | 18615 | 65 | 18947 | 97 | 19264 |
| Total | | 1369 | 32570 | 1509 | 31584 | 1459 | 30046 |

Note: There are no registered factories in Arunachal Pradesh, Lakshadweep, Mizoram and Sikkim

P : Provisional

.. : Not Available

Source: Data collected by DGFASLI through correspondence with Chief Inspector of Factories of States/UTs

Table 8.2 State-wise Status of Employment in Factories during 2009(P)

| Sl. | States/ Union Territories | Registered Factories | Working Factories | Total Employment | Female Workers |
|--------------|------------------------------------|----------------------|-------------------|------------------|----------------|
| 1. | Andaman & Nicobar Islands | 37 | 37 | 5239 | 160 |
| 2. | Andhra Pradesh | 42924 | 30654 | 909957 | 190700* |
| 3. | Assam | 3946 | 2759 | 137432 | 3229 |
| 4. | Bihar | 7212 | 6437 | 98465 | 89 |
| 5. | Chandigarh | 817 | 471 | 7538 | 391 |
| 6. | Chhattisgarh | 4010 | 3388 | 213968 | 14081 |
| 7. | Daman & Diu & Dadra & Nagar Haveli | 5217 | 4009 | 104234 | 31000 |
| 8. | Delhi | 11302 | 7237 | 340465 | 22647 |
| 9. | Goa | 732 | 714 | 53500 | 9200 |
| 10. | Gujarat | 34860 | 24453 | 1257957 | 47977 |
| 11. | Haryana* | 10100 | 9955 | 522493 | 35797 |
| 12. | Himachal Pradesh* | 3357 | 3357 | 194019 | 7085 |
| 13. | Jammu & Kashmir | 1329 | 962 | 43149 | 3641 |
| 14. | Jharkhand | 11540 | 7966 | 263351 | 7238 |
| 15. | Karnataka | 12633 | 12157 | 1200404 | 404380 |
| 16. | Kerala | 18740 | 17465 | 624388 | 293734 |
| 17. | Madhya Pradesh | 7100 | 6700 | 290155 | 7470 |
| 18. | Maharashtra | 39963 | 35904 | 1779254 | 134513 |
| 19. | Manipur | - | - | - | - |
| 20. | Meghalaya | 133 | 121 | 7261 | 419 |
| 21. | Nagaland | 798 | 398 | 29460 | 2853 |
| 22. | Orissa | 3238 | 2462 | 240303 | 8967 |
| 23. | Pondicherry | 2945 | 2351 | 79750 | 10980 |
| 24. | Punjab | 17609 | 17214 | 587644 | 3645 |
| 25. | Rajasthan | 10741 | 10648 | 402827 | 7550 |
| 26. | Tamil Nadu | 40515 | 30386 | 1486290 | 444405 |
| 27. | Tripura | 1626 | 1626 | 57101 | 9750 |
| 28. | Uttar Pradesh | 14026 | 13661 | 1005000 | 21500 |
| 29. | Uttaranchal | 2423 | 2413 | 182356 | 17130 |
| 30. | West Bengal | 14888 | 14389 | 976169 | 19232 |
| Total | | 324761 | 270294 | 13100129 | 1759763 |

Note : There are no registered factories in Arunachal Pradesh, Lakshadweep, Mizoram and Sikkim

P : Provisional

* : Estimated figures

Source: Data collected by DGFASLI through correspondence with Chief Inspector of Factories of States/UTs

Table 8.3 State-wise Hazardous Factories under 2(cb) as on 2009 (P)

| States/ Union Territories | No. of Hazardous Factories | No. of Workers |
|---------------------------------------|-----------------------------------|-----------------------|
| 1. Andaman & Nicobar Islands | 3 | 197 |
| 2. Andhra Pradesh | 0 | 0 |
| 3. Assam | 12 | 7387 |
| 4. Bihar | 43 | 15817 |
| 5. Chandigarh | 0 | 0 |
| 6. Chhattisgarh | 619 | 115858 |
| 7. Daman & Diu & Dadra & Nagar Haveli | 47 | 1500 |
| 8. Delhi | 271 | 11813 |
| 9. Goa | 219 | 27006 |
| 10. Gujarat | 5871 | 300884 |
| 11. Haryana | .. | .. |
| 12. Himachal Pradesh | .. | .. |
| 13. Jammu & Kashmir | 19 | 1361 |
| 14. Jharkhand | 284 | 91611 |
| 15. Karnataka | 1109 | 159896 |
| 16. Kerala | 800 | 37278 |
| 17. Madhya Pradesh | 828 | 73622 |
| 18. Maharashtra | 4944 | 247200 |
| 19. Manipur | .. | .. |
| 20. Meghalaya | 51 | 4418 |
| 21. Nagaland | 1 | 75 |
| 22. Orissa | 374 | 69265 |
| 23. Pondicherry | 204 | 17963 |
| 24. Punjab | 375 | 61615 |
| 25. Rajasthan | 965 | 110060 |
| 26. Tamil Nadu | 812 | 26591 |
| 27. Tripura | 14 | 1013 |
| 28. Uttar Pradesh | 2338 | 289469 |
| 29. Uttaranchal | 554 | 60699 |
| 30. West Bengal | 3289 | 217379 |
| Total | 24046 | 1949977 |

Note: There are no registered factories in Arunachal Pradesh, Lakshadweep, Mizoram and Sikkim

P : Provisional

.. : Not Available

Source: Data collected by DGFASLI through correspondence with Chief Inspector of Factories of States/UTs

Table 8.4 Inspectors of Factories for the year 2009 (P)

| Sl. | States/ Union Territories | Sanctioned | In-position |
|-----|------------------------------------|------------|-------------|
| 1. | Andaman & Nicobar Islands | 2 | 2 |
| 2. | Andhra Pradesh | 76 | 54 |
| 3. | Assam | 29 | 25 |
| 4. | Bihar | 23 | 10 |
| 5. | Chandigarh | 0 | 6 |
| 6. | Chhattisgarh | 15 | 7 |
| 7. | Daman & Diu & Dadra & Nagar Haveli | 1 | 1 |
| 8. | Delhi | 15 | 12 |
| 9. | Goa | 8 | 5 |
| 10. | Gujarat | 124 | 46 |
| 11. | Haryana | .. | .. |
| 12. | Himachal Pradesh | .. | .. |
| 13. | Jammu & Kashmir | 5 | 4 |
| 14. | Jharkhand | 25 | 19 |
| 15. | Karnataka | 46 | 46 |
| 16. | Kerala | 55 | 55 |
| 17. | Madhya Pradesh | 39 | 30 |
| 18. | Maharashtra | 131 | 69 |
| 19. | Manipur | .. | .. |
| 20. | Meghalaya | 3 | 3 |
| 21. | Nagaland | 3 | 3 |
| 22. | Orissa | 27 | 23 |
| 23. | Pondicherry | 9 | 8 |
| 24. | Punjab | 26 | 11 |
| 25. | Rajasthan | 39 | 27 |
| 26. | Tamil Nadu | 132 | 100 |
| 27. | Tripura | 5 | 5 |
| 28. | Uttar Pradesh | 45 | 18 |
| 29. | Uttaranchal | 2 | 2 |
| 30. | West Bengal | 53 | 13 |
| 31. | Total | 938 | 604 |

Note: There are no registered factories in Arunachal Pradesh, Lakshadweep, Mizoram and Sikkim

P : Provisional

.. : Not Available

Source: Data collected by DGFASLI through correspondence with Chief Inspector of Factories of States/UTs

Table 8.5 State-wise Specialist Inspectors of Factories for the year 2009 (P)

| Sl | States/ Union Territories | Medical Inspectors | | Chemical Inspector | | Hygiene Inspector | | Others | |
|-----|------------------------------------|--------------------|-----------------|--------------------|-----------------|-------------------|-----------------|-----------------|-----------------|
| | | Sanct- ioned | In- position | Sanct- ioned | In- position | Sanct- ioned | In- position | Sanct- ioned | In- position |
| | | | | | | | | | |
| 1. | Andaman & Nicobar Islands | 0 | 0 | 0 | 0 | 0 | 0 | 0 | 0 |
| 2. | Andhra Pradesh | 3 | 1 | 1 | 0 | 0 | 0 | 0 | 0 |
| 3. | Assam | 1 | 0 | 0 | 0 | 0 | 0 | 0 | 0 |
| 4. | Bihar | 2 | 2 | 2 | 1 | 0 | 0 | 0 | 0 |
| 5. | Chandigarh | 0 | 0 | 0 | 0 | 0 | 0 | 0 | 0 |
| 6. | Chhattisgarh | 0 | 0 | 0 | 0 | 0 | 0 | 0 | 0 |
| 7. | Daman & Diu & Dadra & Nagar Haveli | 0 | 0 | 0 | 0 | 0 | 0 | 0 | 0 |
| 8. | Delhi | 1 | 1 | 1 | 0 | 0 | 0 | 0 | 0 |
| 9. | Goa | 1 | 1 | 0 | 0 | 0 | 0 | 2 | 1 |
| 10. | Gujarat | 2 | 0 | 1 | 0 | 0 | 0 | 11 | 6 |
| 11. | Haryana | .. | .. | .. | .. | .. | .. | .. | .. |
| 12. | Himachal Pradesh | .. | .. | .. | .. | .. | .. | .. | .. |
| 13. | Jammu & Kashmir | 0 | 0 | 0 | 0 | 0 | 0 | 0 | 0 |
| 14. | Jharkhand | 0 | 0 | 0 | 0 | 0 | 0 | 0 | 0 |
| 15. | Karnataka | 1 | 1 | 0 | 0 | 0 | 0 | 1 | 1 |
| 16. | Kerala | 4 | 2 | 5 | 5 | 0 | 0 | 2 | 2 |
| 17. | Madhya Pradesh | 1 | 1 | 0 | 0 | 0 | 0 | 0 | 0 |
| 18. | Maharashtra | 2 | 0 | 0 | 0 | 0 | 0 | 0 | 0 |
| 19. | Manipur | .. | .. | .. | .. | .. | .. | .. | .. |
| 20. | Meghalaya | 0 | 0 | 0 | 0 | 0 | 0 | 0 | 0 |
| 21. | Nagaland | 0 | 0 | 0 | 0 | 0 | 0 | 0 | 0 |
| 22. | Orissa | 1 | 0 | 1 | 0 | 0 | 0 | 0 | 0 |
| 23. | Pondicherry | 1 | 1 | 1 | 0 | 0 | 0 | 1 | 1 |
| 24. | Punjab | 3 | 3 | 2 | 0 | 0 | 0 | 0 | 0 |
| 25. | Rajasthan | 1 | 1 | 2 | 2 | 1 | 1 | 1 | 1 |
| 26. | Tamil Nadu | 0 | 0 | 0 | 0 | 0 | 0 | 0 | 0 |
| 27. | Tripura | 0 | 0 | 0 | 0 | 0 | 0 | 0 | 0 |
| 28. | Uttar Pradesh | 2 | 0 | 0 | 0 | 0 | 0 | 0 | 0 |
| 29. | Uttaranchal | 0 | 0 | 0 | 0 | 0 | 0 | 0 | 0 |
| 30. | West Bengal | 0 | 0 | 2 | 0 | 0 | 0 | 0 | 0 |
| | Total | 26 | 14 | 18 | 8 | 1 | 1 | 18 | 12 |

Note: There are no registered factories in Arunachal Pradesh, Lakshadweep, Mizoram and Sikkim

P : Provisional

.. : Not Available

Source: Data collected by DGFASLI through correspondence with Chief Inspector of Factories of States/UTs

Table 8.6 Certifying Surgeons of Factories for the year 2009 (P)

| sl | States/UTs | Employed | | Notified | | Remarks |
|-------|------------------------------------|------------|-------------|------------|-------------|---------|
| | | Sanctioned | In position | Sanctioned | In position | |
| 1. | Andaman & Nicobar Islands | 0 | 0 | 4 | 4 | |
| 2. | Andhra Pradesh | 0 | 0 | 0 | 0 | |
| 3. | Assam | 3 | 0 | 0 | 0 | |
| 4. | Bihar | 0 | 0 | 0 | 0 | |
| 5. | Chandigarh | 0 | 0 | 0 | 0 | ! |
| 6. | Chhattisgarh | 0 | 0 | 0 | 0 | |
| 7. | Daman & Diu & Dadra & Nagar Haveli | 0 | 0 | 0 | 1 | |
| 8. | Delhi | 1 | 1 | 0 | 0 | |
| 9. | Goa | 1 | 0 | 0 | 0 | |
| 10. | Gujarat | 12 | 4 | 0 | 0 | |
| 11. | Haryana | .. | .. | .. | .. | |
| 12. | Himachal Pradesh | .. | .. | .. | .. | |
| 13. | Jammu & Kashmir | 0 | 0 | 0 | 0 | |
| 14. | Jharkhand | 0 | 0 | 0 | 0 | |
| 15. | Karnataka | 0 | 0 | 0 | 0 | |
| 16. | Kerala | 1 | 1 | 1 | 1 | |
| 17. | Madhya Pradesh | 0 | 0 | 0 | 0 | |
| 18. | Maharashtra | 1 | 1 | 46 | 0 | |
| 19. | Manipur | .. | .. | .. | .. | |
| 20. | Meghalaya | 0 | 0 | 0 | 0 | |
| 21. | Nagaland | 0 | 0 | 0 | 0 | |
| 22. | Orissa | 0 | 0 | 0 | 0 | |
| 23. | Pondicherry | 0 | 1 | 0 | 0 | # |
| 24. | Punjab | 0 | 0 | 0 | 0 | |
| 25. | Rajasthan | 1 | 0 | 0 | 0 | |
| 26. | Tamil Nadu | 9 | 6 | 0 | 0 | |
| 27. | Tripura | 0 | 0 | 14 | 14 | |
| 28. | Uttar Pradesh | 0 | 0 | 0 | 0 | |
| 29. | Uttaranchal | 0 | 0 | 0 | 0 | |
| 30. | West Bengal | 0 | 0 | 0 | 0 | # |
| Total | | 29 | 14 | 65 | 20 | |

Remark: '#' All Medical Inspector is also the Certifying Surgeon,

'!' Medical officer of Health has been declared Certifying officer,

Note: There are no registered factories in Arunachal Pradesh, Lakshadweep, Mizoram and Sikkim

P : Provisional

.. : Not Available

Source: Data collected by DGFASLI through correspondence with Chief Inspector of Factories of States/UTs

Table 8.7 No of Factories Inspected in the year 2009 (P)

| | States/ Union Territories | All Factories | Hazardous Factories |
|-----|------------------------------------|---------------|---------------------|
| 1. | Andaman & Nicobar Islands | 19 | 0 |
| 2. | Andhra Pradesh | 5504 | 0 |
| 3. | Assam | 749 | 16 |
| 4. | Bihar | 2070 | 29 |
| 5. | Chandigarh | 25 | 25 |
| 6. | Chhattisgarh | 499 | 157 |
| 7. | Daman & Diu & Dadra & Nagar Haveli | 190 | 25 |
| 8. | Delhi | 730 | 136 |
| 9. | Goa | 82 | 10 |
| 10. | Gujarat | 12002 | 4406 |
| 11. | Haryana | .. | .. |
| 12. | Himachal Pradesh | .. | .. |
| 13. | Jammu & Kashmir | 858 | 4 |
| 14. | Jharkhand | 3106 | 432 |
| 15. | Karnataka | 7362 | 1002 |
| 16. | Kerala | 14149 | 666 |
| 17. | Madhya Pradesh | 3084 | 550 |
| 18. | Maharashtra | 11950 | 1940 |
| 19. | Manipur | .. | .. |
| 20. | Meghalaya | 18 | 7 |
| 21. | Nagaland | 247 | 1 |
| 22. | Orissa | 1926 | 374 |
| 23. | Pondicherry | 1208 | 176 |
| 24. | Punjab | 0 | 0 |
| 25. | Rajasthan | 5619 | 0 |
| 26. | Tamil Nadu | 25022 | 1113 |
| 27. | Tripura | 1313 | 14 |
| 28. | Uttar Pradesh | 2733 | 1937 |
| 29. | Uttaranchal | 65 | 21 |
| 30. | West Bengal | 3198 | 427 |
| | Total | 103728 | 13468 |

Note: There are no registered factories in Arunachal Pradesh, Lakshadweep, Mizoram and Sikkim

P : Provisional

.. : Not Available

Source: Data collected by DGFASLI through correspondence with Chief Inspector of Factories of States/UTs

Table 8.8 State-wise Prosecution and Convictions under Section 92 & Section 96A for the year 2009 (P)

| Sl | States/ UTs | Pending fromPrev- ious year | Launched during the year | Decided during the year | Convi- ctions | Imprison- ment (Person) | Total fine Imposed (Rs.) |
|-----|--|-----------------------------------|--------------------------------|-------------------------------|------------------|-------------------------------|--------------------------------|
| 1. | Andaman & Nicobar Islands | 0 | 0 | 0 | 0 | 0 | 0 |
| 2. | Andhra Pradesh | 3280 | 1551 | 644 | 432 | 0 | 5804300 |
| 3. | Assam | 0 | 7 | 0 | 19 | 0 | 0 |
| 4. | Bihar | 31 | 10 | 0 | 0 | 0 | 0 |
| 5. | Chandigarh | 6 | 0 | 2 | 2 | 0 | 27000 |
| 6. | Chattisgarh | 673 | 273 | 229 | 199 | 82 | 4862900 |
| 7. | Daman & Diu & Dadra & Nagar Haveli | 0 | 0 | 0 | 0 | 0 | 0 |
| 8. | Delhi (NCT) | 334 | 96 | 93 | 93 | 0 | 1580000 |
| 9. | Goa | 23 | 14 | 8 | 4 | 0 | 80000 |
| 10. | Gujarat | 24866 | 1344 | 942 | 690 | 0 | 3764400 |
| 11. | Haryana | 0 | 0 | 0 | 0 | 0 | 0 |
| 12. | Himachal Pradesh | 0 | 0 | 0 | 0 | 0 | 0 |
| 13. | Jammu & Kashmir | 110 | 0 | 1 | 0 | 0 | 0 |
| 14. | Jharkhand | 153 | 14 | 3 | 2 | 1 | 0 |
| 15. | Karnataka | 438 | 290 | 142 | 94 | 0 | 1864750 |
| 16. | Kerala | 169 | 50 | 68 | 46 | 0 | 622440 |
| 17. | Madhya Pradesh | 3205 | 163 | 146 | 0 | 0 | 1156200 |
| 18. | Maharashtra | 1074 | 538 | 350 | 350 | 39 | 132500 |
| 19. | Manipur | 0 | 0 | 0 | 0 | 0 | 0 |
| 20. | Meghalaya | 0 | 0 | 0 | 0 | 0 | 0 |
| 21. | Nagaland | 0 | 0 | 0 | 0 | 0 | 0 |
| 22. | Orissa | 1132 | 78 | 21 | 21 | 0 | 398000 |
| 23. | Pondicherry | 2 | 8 | 9 | 8 | 0 | 190000 |
| 24. | Punjab | 510 | 74 | 36 | 4 | 0 | 368000 |
| 25. | Rajasthan | 914 | 131 | 89 | 33 | 0 | 398000 |
| 26. | Tamil Nadu | 11459 | 5434 | 4069 | 2077 | 0 | 12527535 |
| 27. | Tripura | 26 | 24 | 25 | 25 | 0 | 150000 |
| 28. | Uttar Pradesh | 2136 | 109 | 164 | 146 | 0 | 260210000 |
| 29. | Uttaranchal | 139 | 16 | 0 | 0 | 0 | 80000 |
| 30. | West Bengal | 437 | 104 | 34 | 34 | 0 | 1111700 |
| | Total | 51117 | 10328 | 7075 | 4279 | 122 | 295327725 |

Note: There are no registered factories in Arunachal Pradesh, Lakshadweep, Mizoram and Sikkim

P : Provisional

.. : Not Available

Source: Data collected by DGFASLI through correspondence with Chief Inspector of Factories of States/UTs

Table 8.9 State-wise Status of Safety Officers (SO) under 40-B(1) in factories during 2009(P)

| | States/ Union Territories | Factories Requiring SO | Factories who Appointed SO | SO Required | SO Appointed |
|-----|------------------------------------|------------------------|----------------------------|-------------|--------------|
| 1. | Andaman & Nicobar Islands | 0 | 0 | 0 | 0 |
| 2. | Andhra Pradesh | 110 | 91 | 114 | 94 |
| 3. | Assam | 2 | 2 | 5 | 64 |
| 4. | Bihar | 18 | 17 | 24 | 21 |
| 5. | Chandigarh | 2 | 2 | 2 | 2 |
| 6. | Chhattisgarh | 79 | 74 | 83 | 74 |
| 7. | Daman & Diu & Dadra & Nagar Haveli | 16 | 18 | 18 | 18 |
| 8. | Delhi | 9 | 4 | 9 | 4 |
| 9. | Goa | 4 | 61 | 4 | 73 |
| 10. | Gujarat | 285 | 318 | 334 | 393 |
| 11. | Haryana | .. | .. | .. | .. |
| 12. | Himachal Pradesh | .. | .. | .. | . |
| 13. | Jammu & Kashmir | 2 | 2 | 2 | 2 |
| 14. | Jharkhand | 49 | 45 | 153 | 145 |
| 15. | Karnataka | 169 | 145 | 187 | 183 |
| 16. | Kerala | 82 | 56 | 83 | 60 |
| 17. | Madhya Pradesh | 91 | 82 | 109 | 96 |
| 18. | Maharashtra | 579 | 387 | 481 | 537 |
| 19. | Manipur | .. | .. | .. | .. |
| 20. | Meghalaya | 0 | 0 | 0 | 0 |
| 21. | Nagaland | 3 | 3 | 3 | 3 |
| 22. | Orissa | 68 | 65 | 165 | 157 |
| 23. | Pondicherry | 9 | 8 | 9 | 8 |
| 24. | Punjab | 46 | 37 | 46 | 37 |
| 25. | Rajasthan | 45 | 45 | 45 | 45 |
| 26. | Tamil Nadu | 291 | 230 | 291 | 230 |
| 27. | Tripura | 1 | 0 | 1 | 0 |
| 28. | Uttar Pradesh | 185 | 95 | 198 | 101 |
| 29. | Uttaranchal | 34 | 27 | 31 | 29 |
| 30. | West Bengal | 252 | 252 | 278 | 266 |
| | Total | 2431 | 2066 | 2675 | 2642 |

Note: There are no registered factories in Arunachal Pradesh, Lakshadweep, Mizoram and Sikkim

P : Provisional

.. : Not Available

Source: Data collected by DGFASLI through correspondence with Chief Inspector of Factories of States/UTs

Table 8.10 State-wise status of Declaration of Safety Policy for the year 2009 (P)

| Sl | States/ Union Territories | Factories Requiring | Factories Having |
|--------------|------------------------------------|---------------------|------------------|
| 1. | Andaman & Nicobar Islands | 0 | 0 |
| 2. | Andhra Pradesh | 0 | 0 |
| 3. | Assam | 12 | 12 |
| 4. | Bihar | 3 | 3 |
| 5. | Chandigarh | 2 | 2 |
| 6. | Chhattisgarh | 1213 | 1144 |
| 7. | Daman & Diu & Dadra & Nagar Haveli | 50 | 60 |
| 8. | Delhi | 0 | 0 |
| 9. | Goa | 95 | 105 |
| 10. | Gujarat | 3553 | 3412 |
| 11. | Haryana | .. | .. |
| 12. | Himachal Pradesh | .. | .. |
| 13. | Jammu & Kashmir | 33 | 35 |
| 14. | Jharkhand | 83 | 89 |
| 15. | Karnataka | 1175 | 988 |
| 16. | Kerala | 697 | 596 |
| 17. | Madhya Pradesh | 986 | 937 |
| 18. | Maharashtra | 2665 | 1545 |
| 19. | Manipur | .. | .. |
| 20. | Meghalaya | 46 | 32 |
| 21. | Nagaland | 0 | 0 |
| 22. | Orissa | 454 | 396 |
| 23. | Pondicherry | 27 | 27 |
| 24. | Punjab | 705 | 554 |
| 25. | Rajasthan | 497 | 411 |
| 26. | Tamil Nadu | 1994 | 1574 |
| 27. | Tripura | 19 | 10 |
| 28. | Uttar Pradesh | 4444 | 1904 |
| 29. | Uttaranchal | 409 | 349 |
| 30. | West Bengal | 496 | 496 |
| Total | | 19658 | 14681 |

Note: There are no registered factories in Arunachal Pradesh, Lakshadweep, Mizoram and Sikkim

P : Provisional

.. : Not Available

Source: Data collected by DGFASLI through correspondence with Chief Inspector of Factories of States/UTs

Table 8.11 State-wise Constitution of Safety Committee for the year 2009(P)

| | States/ Union Territories | Factories Requiring Safety Committee | Factories Having Safety Committee |
|-----|------------------------------------|--------------------------------------|-----------------------------------|
| 1. | Andaman & Nicobar Islands | 0 | 0 |
| 2. | Andhra Pradesh | 802 | 695 |
| 3. | Assam | 12 | 12 |
| 4. | Bihar | 3 | 3 |
| 5. | Chandigarh | 2 | 2 |
| 6. | Chhattisgarh | 357 | 228 |
| 7. | Daman & Diu & Dadra & Nagar Haveli | 54 | 62 |
| 8. | Delhi | 0 | 0 |
| 9. | Goa | 42 | 158 |
| 10. | Gujarat | 3452 | 3383 |
| 11. | Haryana | .. | .. |
| 12. | Himachal Pradesh | .. | .. |
| 13. | Jammu & Kashmir | 33 | 35 |
| 14. | Jharkhand | 95 | 95 |
| 15. | Karnataka | 959 | 768 |
| 16. | Kerala | 429 | 315 |
| 17. | Madhya Pradesh | 586 | 552 |
| 18. | Maharashtra | 1495 | 997 |
| 19. | Manipur | .. | .. |
| 20. | Meghalaya | 21 | 11 |
| 21. | Nagaland | 0 | 0 |
| 22. | Orissa | 139 | 139 |
| 23. | Pondicherry | 29 | 29 |
| 24. | Punjab | 388 | 331 |
| 25. | Rajasthan | 347 | 302 |
| 26. | Tamil Nadu | 2371 | 2091 |
| 27. | Tripura | 19 | 10 |
| 28. | Uttar Pradesh | 2861 | 1935 |
| 29. | Uttaranchal | 409 | 349 |
| 30. | West Bengal | 493 | 493 |
| | Total | 15398 | 12995 |

Note: There are no registered factories in Arunachal Pradesh, Lakshadweep, Mizoram and Sikkim

P : Provisional

.. : Not Available

Source: Data collected by DGFASLI through correspondence with Chief Inspector of Factories of States/UTs.

Table 8.12 State-wise On-site Emergency Plan (in respect of MAH Units) as on 2009(P)

| | States/ Union Territories | Factories Requiring | | Factories Having |
|-----|------------------------------------|---------------------|-----------|------------------------|
| | | On-site Plan | Emergency | On-site Emergency Plan |
| 1. | Andaman & Nicobar Islands | 3 | | 1 |
| 2. | Andhra Pradesh | 156 | | 152 |
| 3. | Assam | 12 | | 12 |
| 4. | Bihar | 3 | | 3 |
| 5. | Chandigarh | 0 | | 0 |
| 6. | Chhattisgarh | 20 | | 20 |
| 7. | Daman & Diu & Dadra & Nagar Haveli | 0 | | 15 |
| 8. | Delhi | 19 | | 15 |
| 9. | Goa | 16 | | 16 |
| 10. | Gujarat | 366 | | 353 |
| 11. | Haryana | .. | | .. |
| 12. | Himachal Pradesh | .. | | .. |
| 13. | Jammu & Kashmir | 6 | | 6 |
| 14. | Jharkhand | 57 | | 45 |
| 15. | Karnataka | 316 | | 274 |
| 16. | Kerala | 46 | | 45 |
| 17. | Madhya Pradesh | 71 | | 71 |
| 18. | Maharashtra | 348 | | 348 |
| 19. | Manipur | .. | | .. |
| 20. | Meghalaya | 4 | | 4 |
| 21. | Nagaland | 2 | | 2 |
| 22. | Orissa | 31 | | 31 |
| 23. | Pondicherry | 3 | | 3 |
| 24. | Punjab | 50 | | 48 |
| 25. | Rajasthan | 108 | | 108 |
| 26. | Tamil Nadu | 122 | | 119 |
| 27. | Tripura | 2 | | 2 |
| 28. | Uttar Pradesh | 118 | | 112 |
| 29. | Uttaranchal | 30 | | 30 |
| 30. | West Bengal | 85 | | 85 |
| | Total | 1994 | | 1920 |

Note: There are no registered factories in Arunachal Pradesh, Lakshadweep, Mizoram and Sikkim

P : Provisional

.. : Not Available

Source: Data collected by DGFASLI through correspondence with Chief Inspector of Factories of States/UTs,

Table 8.13 State-wise Medical Facilities in factories for the year 2009(P)

| | States/Union Territories | Full time MO | | Retainership or part-time MO | | Factories having Ambulance Van | | Factories having Ambulance Rooms | |
|--------------|------------------------------------|--------------|-------------|------------------------------|-------------|--------------------------------|-------------|----------------------------------|-------------|
| | | Req | App | Req | App | Req | App | Req | App |
| 1. | Andaman & Nicobar Islands | 0 | 0 | 0 | 0 | 0 | 2 | 0 | 2 |
| 2. | Andhra Pradesh | 200 | 188 | 0 | 0 | 0 | 0 | 206 | 169 |
| 3. | Assam | 0 | 0 | 0 | 0 | 0 | 0 | 9 | 62 |
| 4. | Bihar | 15 | 16 | 7 | 7 | 15 | 15 | 15 | 15 |
| 5. | Chandigarh | 1 | 1 | 1 | 1 | 1 | 1 | 1 | 1 |
| 6. | Chhattisgarh | 106 | 71 | 310 | 227 | 94 | 61 | 79 | 64 |
| 7. | Daman & Diu & Dadra & Nagar Haveli | 1 | 1 | 0 | 40 | 0 | 10 | 0 | 15 |
| 8. | Delhi | 9 | 9 | 262 | 60 | 24 | 19 | 24 | 19 |
| 9. | Goa | 15 | 17 | 30 | 79 | 3 | 59 | 3 | 15 |
| 10. | Gujarat | 207 | 142 | 1839 | 1747 | 174 | 158 | 201 | 193 |
| 11. | Haryana | .. | .. | .. | .. | .. | .. | .. | .. |
| 12. | Himachal Pradesh | .. | .. | .. | .. | .. | .. | .. | .. |
| 13. | Jammu & Kashmir | 14 | 10 | 2 | 2 | 12 | 8 | 12 | 6 |
| 14. | Jharkhand | 87 | 84 | 38 | 31 | 58 | 58 | 47 | 45 |
| 15. | Karnataka | 334 | 237 | 330 | 266 | 406 | 289 | 398 | 331 |
| 16. | Kerala | 40 | 36 | 63 | 66 | 42 | 34 | 61 | 54 |
| 17. | Madhya Pradesh | 120 | 111 | 243 | 240 | 99 | 98 | 111 | 110 |
| 18. | Maharashtra | 409 | 230 | 423 | 376 | 299 | 243 | 262 | 243 |
| 19. | Manipur | .. | .. | .. | .. | .. | .. | .. | .. |
| 20. | Meghalaya | 4 | 3 | 18 | 15 | 17 | 7 | 1 | 1 |
| 21. | Nagaland | 0 | 0 | 0 | 0 | 0 | 0 | 0 | 0 |
| 22. | Orissa | 77 | 62 | 0 | 26 | 77 | 61 | 77 | 62 |
| 23. | Pondicherry | 10 | 8 | 28 | 22 | 9 | 9 | 9 | 9 |
| 24. | Punjab | 64 | 54 | 0 | 0 | 0 | 0 | 86 | 71 |
| 25. | Rajasthan | 93 | 93 | 0 | 0 | 0 | 0 | 93 | 93 |
| 26. | Tamil Nadu | 164 | 110 | 431 | 365 | 166 | 160 | 371 | 348 |
| 27. | Tripura | 1 | 1 | 1 | 1 | 0 | 0 | 1 | 1 |
| 28. | Uttar Pradesh | 4436 | 778 | 1319 | 484 | 3987 | 672 | 637 | 230 |
| 29. | Uttaranchal | 37 | 32 | 153 | 153 | 27 | 22 | 39 | 27 |
| 30. | West Bengal | 292 | 292 | 15 | 15 | 303 | 287 | 303 | 295 |
| Total | | 6736 | 2586 | 5513 | 4223 | 5813 | 2273 | 3046 | 2481 |

Note: There are no registered factories in Arunachal Pradesh, Lakshadweep, Mizoram and Sikkim

P : Provisional .. : Not Available

Req: Required App: Appointed

Source: Data collected by DGFASLI through correspondence with Chief Inspector of Factories of States/UTs.

Table 8.14 State-wise Canteens, Shelters, Rest Rooms and Creches for the year 2009 (P)

| Sl | States/ Union Territories | Canteen | | Shelter, Rest Room, Lunch Room | | Creches | |
|-------|------------------------------------|------------------------|---------------------|-----------------------------------|---------------------|------------------------|---------------------|
| | | Factories Requiring | Factories Having | Factories Requiring | Factories Having | Factories Requiring | Factories Having |
| 1. | Andaman & Nicobar Islands | 3 | 3 | 8 | 8 | 0 | 0 |
| 2. | Andhra Pradesh | 392 | 354 | 506 | 485 | 377 | 339 |
| 3. | Assam | 24 | 100 | 66 | 125 | 20 | 31 |
| 4. | Bihar | 27 | 27 | 0 | 0 | 0 | 0 |
| 5. | Chandigarh | 5 | 5 | 5 | 5 | 2 | 2 |
| 6. | Chhattisgarh | 155 | 133 | 323 | 323 | 32 | 28 |
| 7. | Daman & Diu & Dadra & Nagar Haveli | 57 | 72 | 110 | 132 | 90 | 90 |
| 8. | Delhi | 77 | 59 | 93 | 49 | 21 | 8 |
| 9. | Goa | 34 | 106 | 30 | 190 | 2 | 38 |
| 10. | Gujarat | 370 | 367 | 607 | 594 | 171 | 163 |
| 11. | Haryana | .. | .. | .. | .. | .. | .. |
| 12. | Himachal Pradesh | .. | .. | .. | .. | .. | .. |
| 13. | Jammu & Kashmir | 42 | 38 | 54 | 50 | 2 | 2 |
| 14. | Jharkhand | 85 | 55 | 100 | 82 | 10 | 9 |
| 15. | Karnataka | 723 | 675 | 874 | 836 | 1191 | 959 |
| 16. | Kerala | 467 | 439 | 1106 | 1087 | 742 | 716 |
| 17. | Madhya Pradesh | 190 | 188 | 386 | 382 | 50 | 47 |
| 18. | Maharashtra | 841 | 807 | 1470 | 1490 | 235 | 213 |
| 19. | Manipur | .. | .. | .. | .. | .. | .. |
| 20. | Meghalaya | 5 | 4 | 15 | 10 | 4 | 1 |
| 21. | Nagaland | 13 | 13 | 15 | 15 | 0 | 0 |
| 22. | Orissa | 139 | 139 | 175 | 175 | 42 | 42 |
| 23. | Pondicherry | 35 | 28 | 55 | 41 | 5 | 4 |
| 24. | Punjab | 292 | 279 | 428 | 399 | 34 | 33 |
| 25. | Rajasthan | 147 | 147 | 402 | 402 | 23 | 23 |
| 26. | Tripura | 1559 | 1519 | 2860 | 2813 | 2587 | 2444 |
| 27. | Tamil Nadu | 3 | 2 | 3 | 2 | 1 | 0 |
| 28. | Uttar Pradesh | 549 | 273 | 877 | 582 | 182 | 43 |
| 29. | Uttaranchal | 118 | 118 | 204 | 204 | 63 | 63 |
| 30. | West Bengal | 401 | 401 | 668 | 708 | 28 | 28 |
| Total | | 6753 | 6351 | 11440 | 11189 | 5914 | 5326 |

Note: There are no registered factories in Arunachal Pradesh, Lakshadweep, Mizoram and Sikkim

P : Provisional .. :Not Available

Source: Data collected by DGFASLI through correspondence with Chief Inspector of Factories of States/UTs

Table 8.15 State-wise Welfare Officers for the year 2009(P)

| | State/UTs | Factories Requiring | Factories Having | Officers Required | Officers Appointed |
|-----|---------------------------------------|------------------------|---------------------|----------------------|-----------------------|
| 1. | Andaman & Nicobar Islands | 2 | 1 | 1 | 0 |
| 2. | Andhra Pradesh | 175 | 140 | 154 | 132 |
| 3. | Assam | 9 | 9 | 9 | 67 |
| 4. | Bihar | 27 | 27 | 27 | 27 |
| 5. | Chandigarh | 2 | 2 | 2 | 2 |
| 6. | Chhattisgarh | 101 | 101 | 109 | 111 |
| 7. | Daman & Diu & Dadra & Nagar Haveli | 10 | 10 | 10 | 10 |
| 8. | Delhi | 24 | 24 | 25 | 24 |
| 9. | Goa | 14 | 15 | 14 | 21 |
| 10. | Gujarat | 176 | 169 | 189 | 182 |
| 11. | Haryana | .. | .. | .. | .. |
| 12. | Himachal Pradesh | .. | .. | .. | .. |
| 13. | Jammu & Kashmir | 11 | 9 | 11 | 9 |
| 14. | Jharkhand | 92 | 56 | 81 | 70 |
| 15. | Karnataka | 379 | 367 | 409 | 399 |
| 16. | Kerala | 168 | 129 | 167 | 129 |
| 17. | Madhya Pradesh | 117 | 114 | 137 | 136 |
| 18. | Maharashtra | 533 | 454 | 537 | 512 |
| 19. | Manipur | .. | .. | .. | .. |
| 20. | Meghalaya | 1 | 1 | 1 | 1 |
| 21. | Nagaland | 3 | 3 | 3 | 3 |
| 22. | Orissa | 77 | 77 | 128 | 128 |
| 23. | Pondicherry | 10 | 7 | 10 | 7 |
| 24. | Punjab | 89 | 69 | 89 | 69 |
| 25. | Rajasthan | 94 | 94 | 99 | 100 |
| 26. | Tamil Nadu | 457 | 403 | 457 | 403 |
| 27. | Tripura | 1 | 1 | 1 | 1 |
| 28. | Uttar Pradesh | 238 | 191 | 248 | 198 |
| 29. | Uttaranchal | 44 | 37 | 40 | 31 |
| 30. | West Bengal | 220 | 220 | 324 | 324 |
| | Total | 3074 | 2730 | 3282 | 3096 |

Note: There are no registered factories in Arunachal Pradesh, Lakshadweep, Mizoram and Sikkim

P : Provisional, .. : Not Available

Source: Data collected by DGFASLI through correspondence with Chief Inspector of Factories of States/UTs

Table 8.16 Notification of Model Rules framed under the Factories (Amendment) Act, 1987

| | States/ Union Territories | Model Rules |
|-----|-------------------------------------|---|
| 1. | Andaman & Nicobar Islands | No hazardous unit, hence Rules Not applicable |
| 2. | Andhra Pradesh | Notified |
| 3. | Assam | Notified |
| 4. | Bihar | Notified |
| 5. | Chandigarh | Notified in Punjab Factories Rules |
| 6. | Chhattisgarh | Under Progress |
| 7. | Daman, Diu, Dadra & Nagar Haveli | Under process |
| 8. | National Capital Territory of Delhi | Notified |
| 9. | Goa | Notified |
| 10. | Gujarat | Notified |
| 11. | Haryana | Notified |
| 12. | Himachal Pradesh | Not Notified |
| 13. | Jammu & Kashmir | Not Notified |
| 14. | Jharkhand | Notified |
| 15. | Karnataka | Notified |
| 16. | Kerala | Notified |
| 17. | Madhya Pradesh | Notified |
| 18. | Maharashtra | Notified |
| 19. | Manipur | Draft submitted for Govt. approval |
| 20. | Meghalaya | Notified |
| 21. | Nagaland | Draft submitted for Govt. approval |
| 22. | Orissa | Notified |
| 23. | Pondicherry | Notified |
| 24. | Punjab | Notified |
| 25. | Rajasthan | Notified |
| 26. | Tamil Nadu | Notified |
| 27. | Tripura | Notified |
| 28. | Uttar Pradesh | Notified |
| 29. | Uttaranchal | Not Notified |
| 30. | West Bengal | Notified |

Note: There are no registered factories in Arunachal Pradesh, Lakshadweep, Mizoram and Sikkim

P : Provisional

.. : Not Available

“*”: Newly created States.

Source: Data collected by DGFASLI through correspondence with Chief Inspector of Factories of States/UTs

Table 8.17: Notification of Major Accidents Hazard Control Rules

| States/ Union Territories | MAHC Rules, 1997 |
|--|---|
| 1. Andaman & Nicobar Islands | No hazardous unit, hence Rules Not applicable |
| 2. Andhra Pradesh | Notified |
| 3. Assam | Notified |
| 4. Bihar | Notified |
| 5. Chandigarh | Notified |
| 6. Chhattisgarh | * |
| 7. Daman, Diu, Dadra & Nagar Haveli | Notified |
| 8. National Capital Territory of Delhi | Notified |
| 9. Goa | Notified |
| 10. Gujarat | Notified |
| 11. Haryana | Notified |
| 12. Himachal Pradesh | Not Notified |
| 13. Jammu & Kashmir | Not Notified |
| 14. Jharkhand | Notified |
| 15. Karnataka | Notified |
| 16. Kerala | Notified |
| 17. Madhya Pradesh | Notified |
| 18. Maharashtra | Notified |
| 19. Manipur | Draft Rules submitted for approval of state Govt. |
| 20. Meghalaya | Notified |
| 21. Nagaland | Not Notified |
| 22. Orissa | Notified |
| 23. Pondicherry | Draft notification under consideration of Govt. |
| 24. Punjab | Notified |
| 25. Rajasthan | Notified |
| 26. Tamil Nadu | Notified |
| 27. Tripura | Notified |
| 28. Uttar Pradesh | Notified |
| 29. Uttaranchal | Notified |
| 30. West Bengal | Draft sent for notification |

Note: There are no registered factories in Arunachal Pradesh, Lakshadweep, Mizoram and Sikkim

P : Provisional

.. : Not Available

* Newly created States.

Source: Data collected by DGFASLI through correspondence with Chief Inspector of Factories of States/UTs

9 Statistics on Occupational Safety & Health in Ports

DGFASLI is enforcing the Dock Workers (Safety, Health & Welfare) Act, 1986 and Regulations 1990 in all the major ports of the country. The Inspectorate of Dock Safety offices located in the major ports enforce the Act and Regulations. Under Regulations 91(1) & (6) it is obligatory on the part of the Employers of the Dock Workers to report the accidents/ dangerous occurrences to the Inspectorates.

Table 9.1 shows that Mumbai Port accounted for maximum injuries and Mumbai, Kandla and Chennai Ports accounted for maximum fatal injuries in 2010. Table 9.1 shows that Mumbai port accounted for maximum dangerous occurrences. However with the efforts of the Inspectorates by enforcing above statutes and in creating safety awareness among all personnel connected with dock work, Chart 9.1 shows that number of reportable accidents have decreased from 180 in 2001 to 126 in 2010. Among fatal injuries there is no significant change, as depicted in chart 9.1.

As per the analysis of reportable accidents depicted in Chart 9.2 and Chart 9.3, 'Unitized and Break Bulk Cargo' followed by 'Means of Transportation' is the major agency causing the accidents and 'Stepping on, striking against or struck by objects' followed by 'Fall of Persons' is the major type of Accident during the year 2010.

Table 9.1 Reportable Accidents & Dangerous Occurrences in the ports 2010

| Sl.No. | Ports | Fatal | Total | Dangerous Occurrences |
|--------|---------------|-------|-------|-----------------------|
| 1. | Mumbai | 04 | 40 | 04 |
| 2. | J.N.Port | 02 | 11 | 01 |
| 3 | Kandla | 04 | 05 | 01 |
| 4. | Marmugao | 03 | 09 | 01 |
| 5. | Kolkata | 03 | 22 | 02 |
| 6. | Paradip | 03 | 05 | 00 |
| 7. | Visakhapatnam | 00 | 04 | 00 |
| 8. | Chennai | 04 | 13 | 00 |
| 9. | Cochin | 00 | 10 | 02 |
| 10. | New Mangalore | 01 | 02 | 01 |
| 11. | Tuticorin | 00 | 05 | 00 |
| | TOTAL | 24 | 126 | 12 |

Table 9.2 Statistics of Employment & Rates of Reportable Accidents in Ports during 2010

| Sr. No. | Name of Port | Average daily Employment | *Frequency Rate of Injuries | | *Incidence Rate of injuries per Thousand | |
|--------------|---------------|--------------------------|-----------------------------|--------------|--|-------------|
| | | | Fatal | Total | Fatal | Total |
| 1. | Mumbai | 1677 | 0.95 | 9.55 | 2.38 | 23.85 |
| 2. | J.N.Port | 6902 | 0.14 | 0.78 | 0.29 | 1.59 |
| 3. | Kandla | 2943 | 0.54 | 0.68 | 1.36 | 1.69 |
| 4. | Marmugao | 989 | 2.86 | 8.60 | 3.03 | 9.10 |
| 5. | Kolkata | 11673 | 0.031 | 0.23 | 0.26 | 1.88 |
| 6. | Paradip | 373 | 2.76 | 4.59 | 8.04 | 13.40 |
| 7. | Visakhapatnam | 2374 | - | 5.61 | - | 1.96 |
| 8. | Chennai | 713 | 0.64 | 2.11 | 5.61 | 18.23 |
| 9. | Cochin | 328 | - | 10.52 | - | 30.48 |
| 10. | New Mangalore | 180 | 1.93 | 3.87 | 0.002 | 0.004 |
| 11. | Tuticorn | 566 | - | 3.09 | - | 8.83 |
| TOTAL | | 28718 | #0.096 | #0.51 | 0.836 | 4.39 |

* Formula (As per IS 3786 of 1983)

1. Frequency Rate – No. of Reportable Accidents X 1,000,000/Man hours worked.

2. Incidence Rate- No. of Reportable Accidents X 1,000/Avg. No. of Persons Employed.

Manhours worked are calculated on the basis of 362 working days in a year.

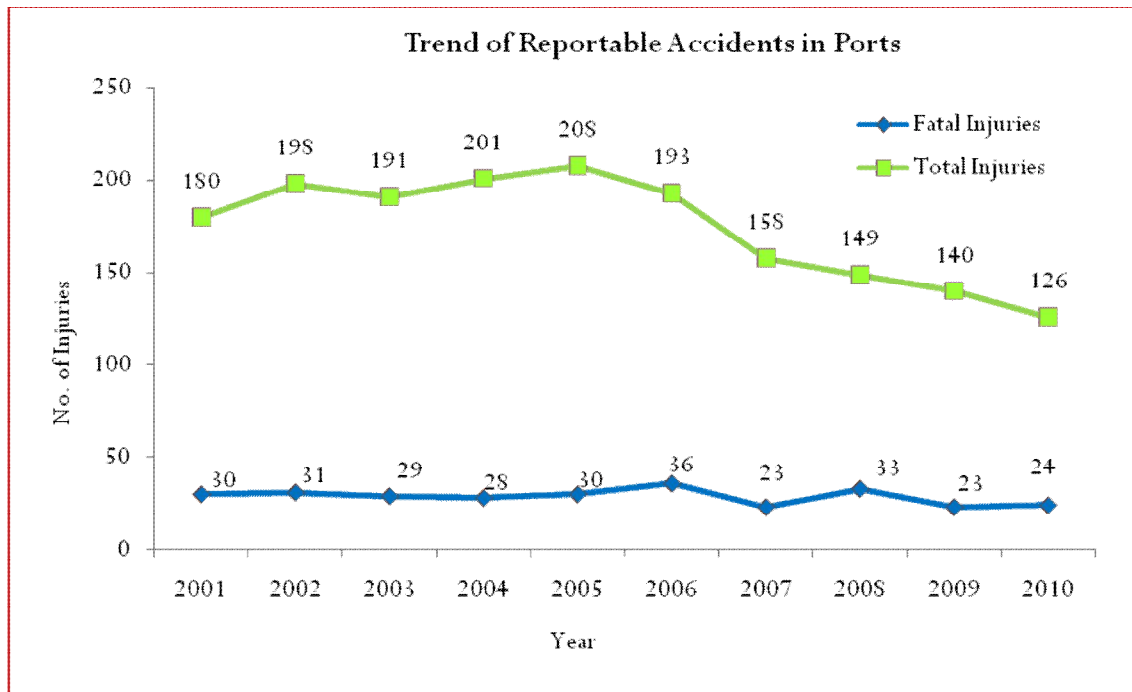
Chart 9.1

Chart 9.2

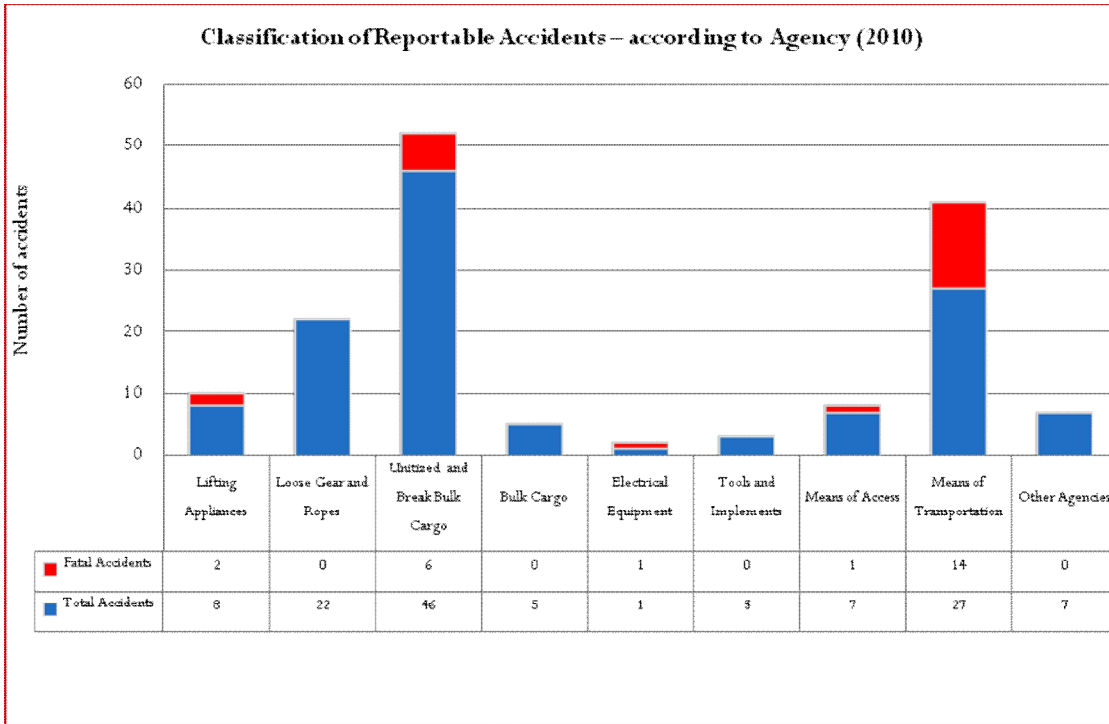


Chart : 9.3

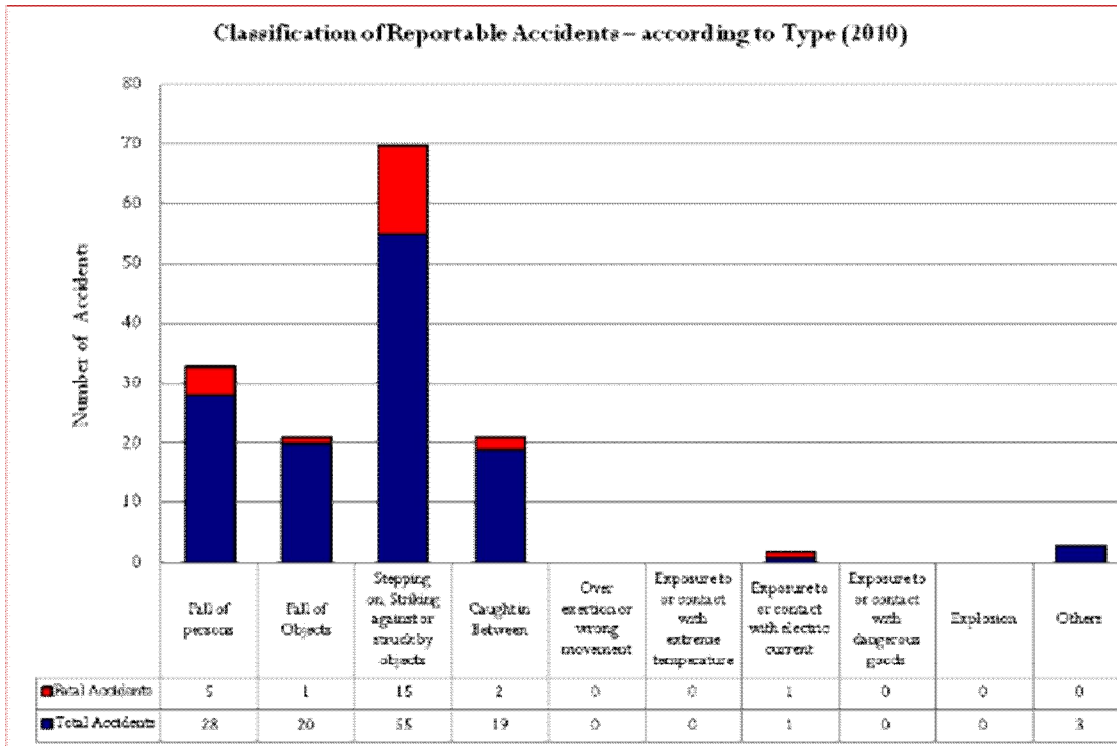


Table 9.3 CLASSIFICATION OF TO REPORTABLE ACCIDENTS – ACCORDING to AGENCY (2010)

| Agency | Mum- bai | J.N. Port | Kandla | Marm- ugao | Kol- kata | Para- dip | Visakha- patnam | Chennai | Cochin | New Mangalore | Tuticorn | Total |
|---|--------------|--------------|--------------|---------------|--------------|--------------|--------------------|--------------|-----------|------------------|-----------|----------------|
| 1 | 2 | 3 | 4 | 5 | 6 | 7 | 8 | 9 | 10 | 11 | 12 | 13 |
| A. Lifting Appliances | -- | -- | -- | 01 | 04(1) | -- | -- | 01(1) | -- | -- | 02 | 08(2) |
| B. Loose Gear and Ropes | 13 | -- | -- | -- | 08 | -- | 01 | -- | -- | -- | -- | 22 |
| C. Unitized and Break Bulk Cargo | 17(2) | -- | 04(3) | -- | 04 | -- | 02 | 09 | 08 | 01(1) | 01 | 46(6) |
| D. Bulk Cargo | -- | -- | -- | -- | 01 | -- | 01 | -- | 01 | -- | 02 | 05 |
| E. Electrical Equipment | -- | -- | -- | -- | -- | -- | -- | 01(1) | -- | -- | -- | 01(1) |
| F. Tools and Implements | -- | 02 | -- | 01 | -- | -- | -- | -- | -- | -- | -- | 03 |
| G. Means of Access | 03(1) | 01 | -- | 01 | 02 | -- | -- | -- | -- | -- | -- | 07(1) |
| H. Means of Transportation | 06(1) | 08(2) | 01(1) | 03(3) | 03(2) | 04(3) | -- | 02(2) | -- | -- | -- | 27(14) |
| I. Other Agencies | 01 | -- | -- | 03 | -- | 01 | -- | -- | 01 | 01 | - | 07 |
| TOTAL | 40(4) | 11(2) | 05(4) | 09(3) | 22(3) | 05(3) | 04 | 13(4) | 10 | 02(1) | 05 | 126(24) |

Table 9.4 Classification of Reportable Accidents – according to Type (2010)

| Agency | Mumbai | J.N. Port | Kandla | Marmugao | Kolkata | Paradip | Visakhapatnam | Chennai | Cochin | New Mangalore | Tuticorin | Total |
|---|--------------|--------------|--------------|--------------|--------------|--------------|---------------|--------------|-----------|---------------|-----------|-----------------|
| 1 | 2 | 3 | 4 | 5 | 6 | 7 | 8 | 9 | 10 | 11 | 12 | 13 |
| A. Fall of persons | 09(2) | 01 | 01(1) | 03 | 05 | -- | 01 | 1(1) | 04 | 01(1) | 02 | 28 (5) |
| B. Fall of Objects | 03 | 01 | 01 | 02 | 05 | 01 | 02 | 1(1) | 02 | -- | 02 | 20(1) |
| C. Stepping on, Striking against or struck by objects | 19(2) | 07(2) | 03(3) | 02(2) | 09(2) | 03(3) | 01 | 10(1) | -- | -- | 01 | 55(15) |
| D. Caught in Between | 08 | 01 | -- | 01(1) | 03(1) | 01 | -- | -- | 04 | 01 | -- | 19(2) |
| E. Over exertion or wrong movement | -- | -- | -- | -- | -- | -- | -- | -- | -- | -- | -- | -- |
| F. Exposure to or contact with extreme temperature | -- | -- | -- | -- | -- | -- | -- | -- | -- | -- | -- | -- |
| G. Exposure to or contact with electric current | -- | -- | -- | -- | -- | -- | -- | 01(1) | -- | -- | -- | 01(1) |
| H. Exposure to or contact with dangerous goods | -- | -- | -- | -- | -- | -- | -- | -- | -- | -- | -- | -- |
| I. Explosion | -- | -- | -- | -- | -- | -- | -- | -- | -- | -- | -- | -- |
| J. Others | 01 | 01 | -- | 01 | -- | -- | -- | -- | -- | -- | -- | 03 |
| TOTAL | 40(4) | 11(2) | 05(4) | 09(3) | 22(3) | 05(3) | 04 | 13(4) | 10 | 02(1) | 05 | 126 (24) |

Table 9.5 Details of Inspections and other visits in Ports during 2010.

| Sl. No. | Ports | Ship | Dock | Gear | Isolated Storage/Pipelines | Other visits |
|---------|---------------|------|------|------|----------------------------|--------------|
| 1. | Mumbai | 156 | 35 | 156 | 02 | 270 |
| 2. | J.N.Port | 30 | 49 | 00 | 00 | 62 |
| 3. | Kandla | 126 | 69 | 159 | 00 | 141 |
| 4. | Marmugao | 72 | 77 | 75 | 03 | 77 |
| 5. | Kolkota | 168 | 62 | 168 | 02 | 148 |
| 6. | Paradip | 79 | 26 | 79 | 11 | 71 |
| 7. | Visakhapatnam | 100 | 30 | 100 | 00 | 96 |
| 8. | Chennai | 237 | 218 | 240 | 01 | 158 |
| 9. | Cochin | 23 | 17 | 37 | 05 | 71 |
| 10. | New Mangalore | 113 | 04 | 113 | 16 | 176 |
| 11. | Tuticorin | 138 | 47 | 119 | 00 | 42 |
| | TOTAL | 1242 | 634 | 1246 | 40 | 1312 |

Table 9.6 Details of Details of Prosecution in Ports during 2010

| Sl.No. | Ports | Pending from previous year | Launched during the year | Decided during the year | Convicted |
|--------|---------------|----------------------------|--------------------------|-------------------------|-----------|
| 1. | Mumbai | 03 | 00 | 00 | 00 |
| 2. | J.N.Port | 01 | 00 | 00 | 00 |
| 3. | Kandla | 15 | 02 | 03 | 03 |
| 4. | Marmugao | 00 | 00 | 00 | 00 |
| 5. | Kolkata | 03 | 00 | 00 | 00 |
| 6. | Paradip | 03 | 00 | 00 | 00 |
| 7. | Visakhapatnam | 02 | 01 | 03 | 00 |
| 8. | Chennai | 07 | 01 | 00 | 00 |
| 9. | Cochin | 01 | 00 | 00 | 00 |
| 10. | New Mangalore | 02 | 01 | 01 | 01 |
| 11. | Tuticorn | 00 | 01 | 01 | 01 |
| | TOTAL | 37 | 06 | 08 | 05 |

Table 9.7 Details of Investigation into Reportable Fatal Accidents/Dangerous Occurrences in 2010

| Sl.No. | Ports | Pending from previous year | Initiated during the year | Concluded during the year |
|--------|---------------|----------------------------|---------------------------|---------------------------|
| 1. | Mumbai | 00 | 04 | 00 |
| 2. | J.N.Port | 02 | 02 | 01 |
| 3 | Kandla | 06 | 05 | 05 |
| 4. | Mormugao | 02 | 03 | 02 |
| 5. | Kolkata | 06 | 04 | 08 |
| 6. | Paradip | 03 | 03 | 00 |
| 7. | Visakhapatnam | 01 | 00 | 00 |
| 8. | Chennai | 11 | 06 | 10 |
| 9. | Cochin | 02 | 00 | 01 |
| 10. | New Mangalore | 03 | 01 | 01 |
| 11. | Tuticorin | 04 | 00 | 03 |
| | TOTAL | 40 | 28 | 31 |

Table 9.8 Dock Safety Committee Meetings conducted/Safety Weeks celebrated in 2010

| Sl.No. | Ports | Committee Meetings | Safety Weeks |
|--------|---------------|--------------------|--------------|
| 1. | Mumbai | 04 | 01 |
| 2. | J.N.Port | 04 | 02 |
| 3 | Kandla | 04 | 01 |
| 4. | Marmugao | 03 | 00 |
| 5. | Kolkata | 06 | 02 |
| 6. | Paradip | 03 | 00 |
| 7. | Visakhapatnam | 02 | 01 |
| 8. | Chennai | 02 | 01 |
| 9. | Cochin | 04 | 01 |
| 10. | New Mangalore | 03 | 01 |
| 11. | Tuticorn | 04 | 01 |
| | TOTAL | 39 | 11 |

Table 9.9 Total Number of Ships Called in the Major Port during 2009 and 2010

| Sr. No. | Port | Oil Tankers | | Others | |
|---------|---------------|-------------|------|--------|-------|
| | | 2009 | 2010 | 2009 | 2010 |
| 1 | Mumbai | 1123 | 1190 | 4730 | 4396 |
| 2 | J.N. Port | 498 | 480 | 2519 | 2611 |
| 3 | Kandla | 1287 | 935 | 1237 | 1317 |
| 4 | Mormugao | 159 | 163 | 688 | 805 |
| 5 | Kolkata | 1157 | 1257 | 2242 | 2294 |
| 6 | Paradip | 304 | 312 | 1257 | 1237 |
| 7 | Visakhapatnam | 697 | 768 | 2380 | 1670 |
| 8 | Chennai | 281 | 299 | 1826 | 1868 |
| 9 | Cochin | 760 | 618 | 58 | 38 |
| 10 | New Mangalore | 688 | 696 | 526 | 421 |
| 11 | Tuticorin | 174 | 175 | 1246 | 1239 |
| | Total | 7128 | 6893 | 18709 | 17896 |

Table 9.10 Cargo Handled in the Major Port during 2009 and 2010 (In Tonnes)

| Sr. No. | Port | Containers in TUE'S | | POL | | Others | |
|---------|---------------|---------------------|----------|-----------|-----------|-----------|-----------|
| | | 2009 | 2010 | 2009 | 2010 | 2009 | 2010 |
| 1 | Mumbai | 56305 | 70663 | 34808000 | 33884000 | 18848000 | 20289000 |
| 2 | J.N. Port | 3857566 | 7743222 | 6762541 | 6794353 | 999028 | 1102814 |
| 3 | Kandla | 130073 | 155887 | 52755142 | 10520000 | 23471146 | 23640000 |
| 4 | Mormugao | 17297 | 17019 | 963833 | 942777 | 47883064 | 49074199 |
| 5 | Kolkata | 468308 | 514435 | 12863 | 11063 | 35296 | 36037 |
| 6 | Paradip | 3718 | 4103 | 10054328 | 11853781 | 45586914 | 44424368 |
| 7 | Visakhapatnam | 94908 | 126800 | 20346011 | 19992061 | 51290000 | 64990000 |
| 8 | Chennai | 1134303 | 1447082 | 13774587 | 13260144 | 45755889 | 47660637 |
| 9 | Cochin | 286984 | 296150 | 12541953 | 13172152 | 6852374 | 5793047 |
| 10 | New Mangalore | 28956 | 38496 | 18040000 | 21228000 | 18050000 | 10711000 |
| 11 | Tuticorin | 426448 | 452950 | 542764 | 1380665 | 16552882 | 22405982 |
| | Total | 6504866 | 10866807 | 170602022 | 133038995 | 275324593 | 290127084 |

Table 9.11 Safety Facilities in the Major Port during 2010

| Sr. No. | Port | No. of Safety Officers | No. of Visits to Safety Exhibition Centers | No. of Competent Persons |
|---------|---------------|------------------------|--|--------------------------|
| 1 | Mumbai | 04 | 00 | 31 |
| 2 | J.N. Port | 09 | 00 | 04 |
| 3 | Kandla | 01 | 00 | 03 |
| 4 | Mormugao | 01 | 03 | 02 |
| 5 | Kolkata | 03 | 00 | 21 |
| 6 | Paradip | 01 | 00 | 02 |
| 7 | Visakhapatnam | 01 | 00 | 14 |
| 8 | Chennai | 01 | 00 | 07 |
| 9 | Cochin | 01 | 00 | 02 |
| 10 | New Mangalore | 01 | 00 | 03 |
| 11 | Tuticorin | 03 | 00 | 03 |
| | Total | 26 | 03 | 92 |

Table 9.12 Health Facilities in the Major Port during 2010

| Sr. No. | Port | OSH Centers | Ambulance Rooms | First Aid | Empanelled Doctors |
|---------|---------------|-------------|-----------------|-----------|--------------------|
| 1 | Mumbai | 01 | 04 | 104 | 03 |
| 2 | J.N. Port | 03 | 02 | 32 | 03 |
| 3 | Kandla | 00 | 01 | 01 | 00 |
| 4 | Mormugao | 03 | 02 | 03 | 03 |
| 5 | Kolkata | 02 | 04 | 16 | 03 |
| 6 | Paradip | 01 | 00 | 07 | 00 |
| 7 | Visakhapatnam | 03 | 03 | 04 | 03 |
| 8 | Chennai | 01 | 05 | 06 | 01 |
| 9 | Cochin | 01 | 01 | 04 | 01 |
| 10 | New Mangalore | 01 | 02 | 02 | 00 |
| 11 | Tuticorin | 01 | 04 | 03 | 00 |
| | Total | 17 | 28 | 182 | 17 |

Table 9.13 Welfare Facilities in the Major Port during 2010

| Sr. No. | Port | No. of Welfare Officers | Canteens | Drinking Water | Washing Facilities | Urinals |
|---------|---------------|-------------------------|----------|----------------|--------------------|---------|
| 1 | Mumbai | 04 | 09 | 13 | 17 | 132 |
| 2 | J.N. Port | 02 | 05 | 80 | 62 | 241 |
| 3 | Kandla | 01 | 02 | 11 | 08 | 08 |
| 4 | Mormugao | 01 | 06 | 09 | 06 | 15 |
| 5 | Kolkata | 02 | 14 | 203 | 110 | 150 |
| 6 | Paradip | 01 | 04 | 04 | 03 | 03 |
| 7 | Visakhapatnam | 02 | 05 | 11 | 05 | 12 |
| 8 | Chennai | 08 | 12 | 171 | 50 | 50 |
| 9 | Cochin | 01 | 04 | 19 | 63 | 60 |
| 10 | New Mangalore | 00 | 05 | 07 | 08 | 13 |
| 11 | Tuticorin | 00 | 03 | 12 | 05 | 10 |
| | Total | 22 | 69 | 540 | 337 | 694 |

ANNEXURE- I

UNIT LEVEL CONSULTANCY STUDIES – 2010

| Sl. No. | Area | CLI MUMBAI | | RLI KOLKATA | | RLI CHENNAI | | RLI KANPUR | | RLI FARIDABAD | |
|---------|--------------------------------|------------|----------------|-------------|----------------|-------------|----------------|------------|----------------|---------------|----------------|
| | | Completed | Under Progress | Completed | Under Progress | Completed | Under Progress | Completed | Under Progress | Completed | Under Progress |
| 1 | 2 | 3 | 4 | 5 | 6 | 7 | 8 | 9 | 10 | 11 | 12 |
| 1 | Safety Audit | - | 3 | 5 | 1 | 3 | 2 | 3 | 1 | 1 | 1 |
| 2 | Occupational Health | - | - | - | 1 | - | - | 1 | - | - | - |
| 3 | Airborne Contaminants | 16 | 5 | - | - | - | - | - | - | - | - |
| 4 | Noise Level | 1 | 1 | - | - | - | - | - | - | - | - |
| 5 | Ventilation study | 1 | 1 | - | - | - | - | - | - | - | - |
| 6 | Maximum Credible Loss Scenario | - | - | - | - | - | - | - | - | - | - |
| 7 | HAZOP | 2 | - | - | - | - | - | - | - | - | - |
| 8 | Safety Audit-MAHC | 2 | 1 | - | - | - | - | - | - | - | - |
| 9 | Transport hazards study | - | - | - | - | 1 | - | - | - | - | - |
| 10 | Ergonomic Evaluation | 1 | - | - | - | - | - | - | - | - | - |
| 11 | Heat Stress | - | - | - | - | - | - | - | - | - | - |
| 12 | Hazard Identification | 1 | - | - | - | 2 | 1 | - | - | - | - |
| 13 | Dispersion Modeling | 2 | - | - | - | - | - | - | - | - | - |
| 14 | Environmental Study | - | - | 2 | - | 5 | 2 | 2 | - | - | - |
| 15 | Illumination Study | 2 | 1 | - | - | - | - | - | - | - | - |
| 16 | Vibration study | - | - | - | - | - | - | - | - | - | - |
| | Total: | 28 | 12 | 7 | 2 | 11 | 5 | 6 | 1 | 1 | 1 |

| C. Supervisors | | | | | | | | | | | | | |
|--|-----------|-----------------|-----------|-----------------|----------|----------------|----------|----------------|----------|---------------|----------|---------------|--|
| Safety & Health | 3 | 64(39) | - | - | 1 | 64(38) | 3 | 54(27) | 1 | 7(2) | 2 | 82(23) | |
| Environment | 1 | 6(4) | - | - | - | - | - | - | - | - | - | - | |
| Industrial Psychology | 3 | 45(10) | - | - | - | - | - | - | - | - | - | - | |
| Hazardous substances | 2 | 21(11) | - | - | - | - | - | - | 1 | 4(2) | - | - | |
| Productivity | 5 | 175(22) | - | - | - | - | - | - | - | - | - | - | |
| D. Trade Union Leaders/workers/ Joint Participation | | | | | | | | | | | | | |
| Industrial Safety | - | - | 4 | 99(11) | - | - | - | - | - | - | - | - | |
| Staff Training | 4 | 65(18) | - | - | - | - | - | - | - | - | - | - | |
| Indl. Psychology | 1 | 16(1) | - | - | - | - | - | - | - | - | - | - | |
| Total: | 40 | 690(270) | 15 | 262(113) | 3 | 127(79) | 6 | 126(71) | 5 | 79(44) | 2 | 82(23) | |

Note : Figures in bracket indicate number of organisations.

ANNEXURE- III

IN- COMPANY TRAINING PROGRAMMES - 2010

| Sl. No. | Participants and Area | CLI MUMBAI | | RLI KOLKATA | | RLI CHENNAI | | RLI KANPUR | | RLI FARIDABAD | |
|-----------|-----------------------------|------------|--------------|-------------|--------------|-------------|--------------|------------|--------------|---------------|--------------|
| | | Programmes | Participants | Programmes | Participants | Programmes | Participants | Programmes | Participants | Programmes | Participants |
| A. | Management Personnel | | | | | | | | | | |
| | a) Industrial Safety | 1 | 15(1) | - | - | 3 | 69(3) | - | - | 1 | 90(1) |
| | b) Productivity | 3 | 138(3) | - | - | - | - | - | - | - | - |
| | c) Staff Training | 1 | 21(1) | - | - | - | - | - | - | - | - |
| | d) Industrial Psychology | 5 | 140(5) | - | - | - | - | - | - | - | - |
| | e) Construction Safety | 1 | 50(1) | - | - | - | - | - | - | - | - |
| | f) MAHCA | 1 | 30(1) | - | - | - | - | - | - | - | - |
| B. | Supervisor | | | | | | | | | | |
| | a) Chemical Safety | 4 | 96(4) | - | - | - | - | - | - | 1 | 28(1) |
| | b) Industrial Psychology | 1 | 32(1) | | | | | | | | |
| | c) Industrial Safety | 5 | 128(5) | - | - | - | - | - | - | - | - |
| C. | Trade Union | | | | | | | | | | |
| | a) Industrial Safety | - | - | - | - | 4 | 80(4) | - | - | - | - |
| | b) Occupational Health | 2 | 75(2) | - | - | - | - | - | - | - | - |
| | c) Industrial Psychology | 2 | 66(2) | | | | | | | | |
| | Total | | | | | | | | | | |

Note: Figures in bracket indicate number of organisations.

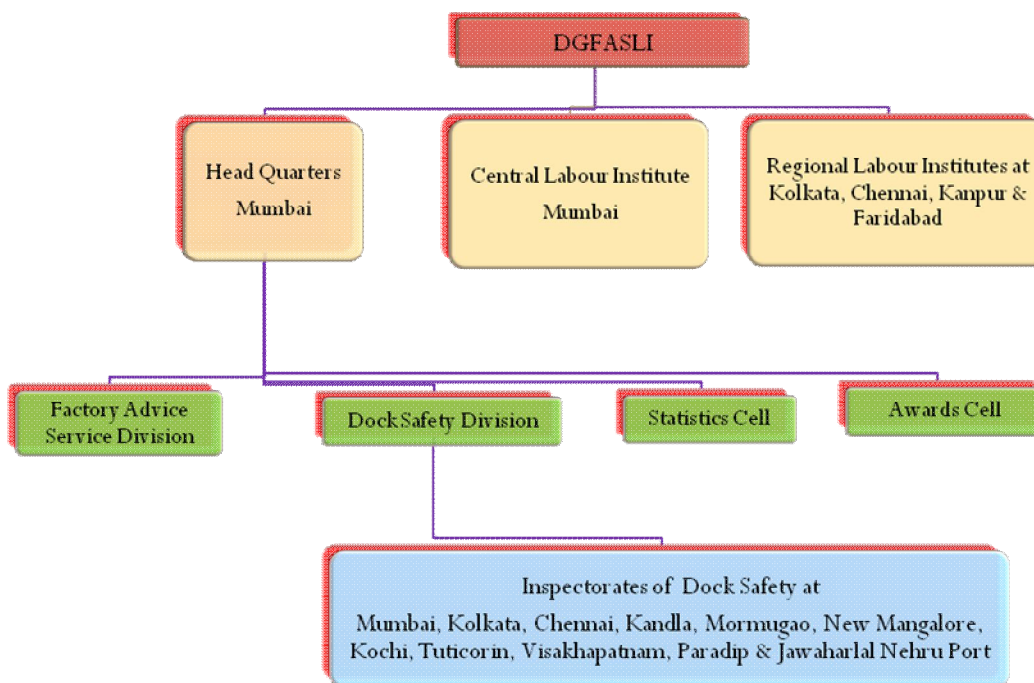
ANNEXURE- IV

SHORT DURATION (1-2days) TRAINING PROGRAMMES - 2010

| Sl No. | Participants and Area | CLI MUMBAI | | RLI KOLKATA | | RLI CHENNAI | | RLI KANPUR | | RLI FARIDABAD | | INSPECTORATE OF DOCK SAFETY | |
|--------|--|------------|--------------|-------------|--------------|-------------|--------------|------------|--------------|---------------|--------------|-----------------------------|--------------|
| | | Programmes | Participants | Programmes | Participants | Programmes | Participants | Programmes | Participants | Programmes | Participants | Programmes | Participants |
| | Management | | | | | | | | | | | | |
| | Safety | | | | | 1 | 20(1) | | | | | | |
| | Hazardous Industries | | | | | 1 | 11(8) | | | | | | |
| | Construction Safety | | | | | 1 | 19(10) | | | | | | |
| | Trade Union Leader/ Workers/ Joint Participation | | | | | | | | | | | | |
| | Construction Safety | | | | | | | | | 1 | 49(6) | | |
| | Students of Educational Institutions | | | | | | | | | | | | |
| | Industrial Safety | | | 5 | 164(5) | | | | | | | | |
| | Industrial Ergonomics | 1 | 21(1) | | | | | | | | | | |
| | Industrial Physiology | 1 | 29(1) | | | | | | | | | | |
| | Other Enforcement officers | | | | | | | | | | | | |
| | Industrial Safety | | | | | 1 | 4(1) | | | | | | |
| | Total: | 2 | 50(2) | 5 | 164(5) | 4 | 54(20) | | | 1 | 49(6) | | |

Note: Figures in bracket indicate number of organisations

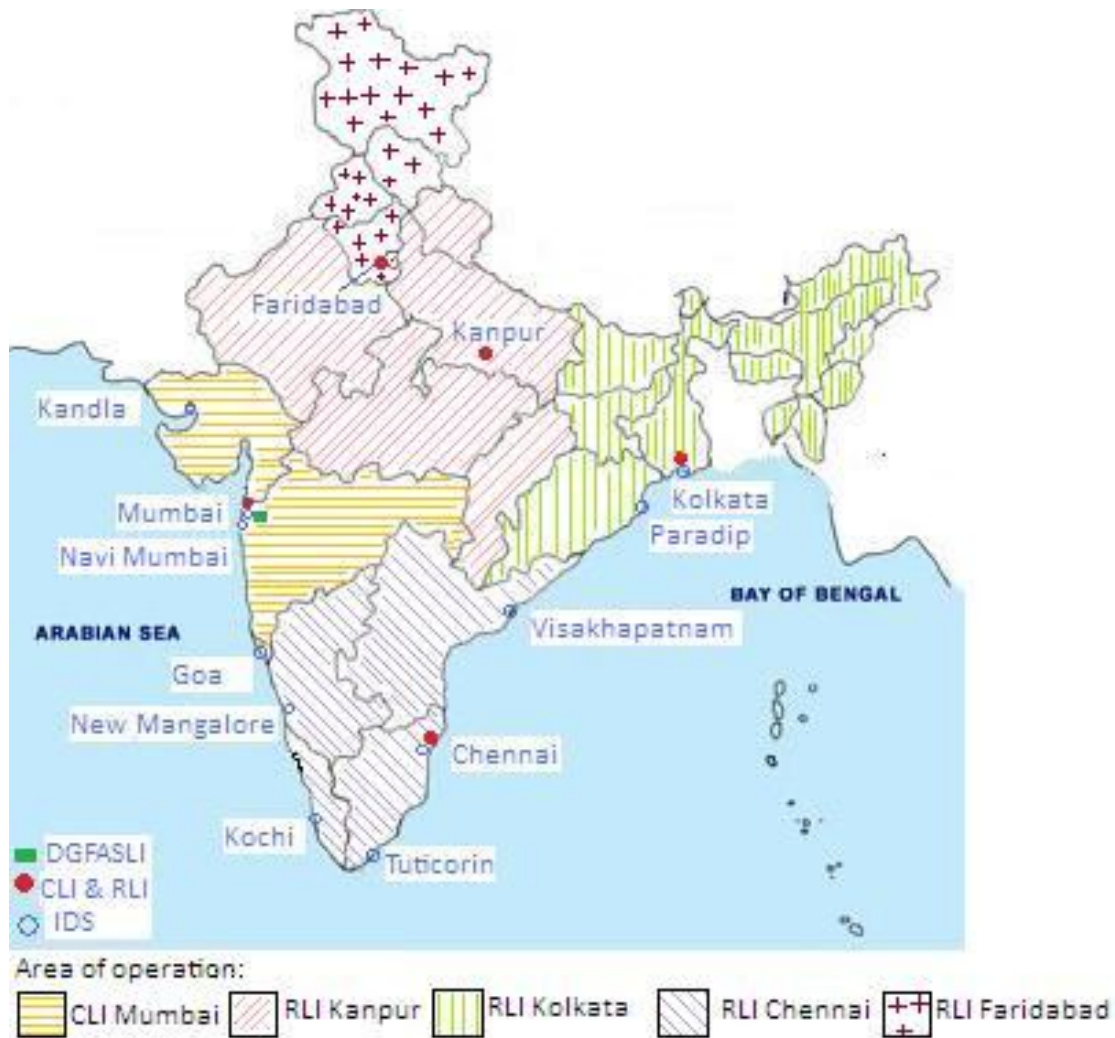
ORGANISATION CHART



Address of DGFASLI and its Subordinate Offices

| | | |
|---|--|---|
| <p>Directorate General Factory Advice Service & Labour Institutes, Mumbai N.S.Mankikar Marg, Sion, Mumbai-400 022. PBX No.91-22-24092203 Fax: 022-24071986 e-mail: fasli@dgfasli.nic.in</p> | <p>Regional Labour Institute, Chennai Sardar Patel Road, Adyar, TTTI PO, Chennai-600113 Tel: 22350737, 22351569, 22355690 FAX : 044- 22352457 e-mail: rlic@vsnl.net</p> | <p>Inspectorate Dock Safety, Goa 108,NeogiMansion,Vasco-Da-Gama, Mormugao, Goa-403802 Tel: 2517334 Fax: 0832 -2517334 e-mail: fasli@dgfasli.nic.in</p> |
| <p>Central Labour Institute, Mumbai N.S.Mankikar Marg, Sion, Mumbai-400 022. PBX No.91-22-24092203 Fax: 022-24071986 e-mail: cli@dgfasli.nic.in</p> | <p>Regional Labour Institute, Faridabad Sector 47, Haryana - 121003 Tel: 0129-2468022 FAX : 0129-2437064 e-mail: rlifaridabad@yahoo.co.in</p> | <p>Inspectorate Dock Safety, New Mangalore New Mangalore Port, Panambur, New Mangalore-575010 Tel: 2407781 Fax: 0824 – 2407781 e-mail: idsmlr@sancharnet.in</p> |
| <p>Regional Labour Institute, Kanpur Sarvodya Nagar, Kanpur-208 005 Tel: 2218691,2218692, 2218745 Fax : 0512-2215112 e-mail: rlikanpur5@gmail.com rlik@indiatimes.com</p> | <p>Inspectorate of Dock Safety, Mumbai Operation Service Centre, 3rd Floor, P.D'mello Rd., Mumbai-400 038 Tel: 22613391, 22692180 Fax : 022 – 22613391 e-mail: idsmumbai@vsnl.net</p> | <p>Inspectorate Dock Safety, Kandla Near Bunder Gate, New Kandla -370210 Tel: 270249 Fax: 02836 – 270249 e-mail: idskandla@sancharnet.in</p> |
| <p>Regional Labour Institute, Kolkata Lake Town, Kolkata-700 089 Tel: 25342732, 25342735, 25343254 Fax: 033 – 25348182 email: rlikol@vsnl.net</p> | <p>Inspectorate Dock Safety, J. N. Port POC Canteen Bldg., J.N. .Port, Sheva, Navi Mumbai – 400 707 Tel: 27471584, 27470201</p> | <p>Inspectorate Dock Safety, Cochin C.D.L.B. Dispensary Building, G.V.Ayyar Rd, Willington Island, Cochin-682003 Tel: 2666532 Fax : 0484 – 2666532 e-mail: idscochin@sancharnet.in</p> |
| <p>Inspectorate Dock Safety, Tuticorin Tuticorin Port Trust, Admn. Office Building, Post. Box No.4, Harbour P.O. Tuticorin-628004 Tel: 2352372 Fax: 0461 – 2352372 e-mail: idstuty@sancharnet.in</p> | <p>Inspectorate Dock Safety, Visakhapatnam Old D.L.B. Building, 1st Floor, Port Area, Opp. Harbour Main Gate Building, Visakhapatnam-530 035 Tel: 2563857 Fax : 0891-2563857 e-mail: idsvizag@sancharnet.in</p> | <p>Inspectorate Dock Safety, Kolkata Nizam Palace, 1st floor, 2nd M.S.O. Building, 234/4, A.J.C. Bose Road, Kolkata-700 020. Tel: 22830718, 22830719 Fax : 033 – 22830718 e-mail: idskol@vsnl.net</p> |

| | | |
|---|---|---|
| Inspectorate Dock Safety, Chennai 3 rd Floor, Anchor Gate Building, Rajaji Salai, Chennai - 600 001. Tel: 25220888, 25246419 Fax: 044 – 25220888 e-mail: idschn@vsnl.net | Inspectorate Dock Safety, Paradip P.B. No.126, Dist. Paradip, Jagatsinghpur, Orissa – 754142. Tel : 222413 Fax : 06722 – 222413 e-mail: idsparadip@sify.com | Inspectorate of Dock Safety, Ennore (Being setup) Operated from Inspectorate Dock Safety, Chennai |
|---|---|---|



Jurisdiction Map of DGFASLI Offices